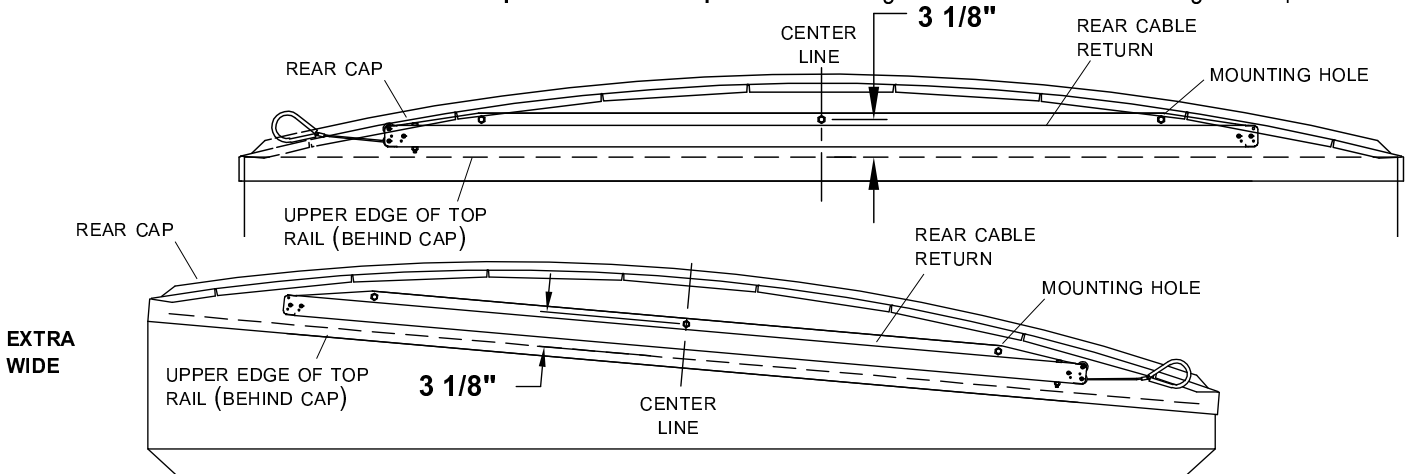


INSTALLATION PROCEDURE:

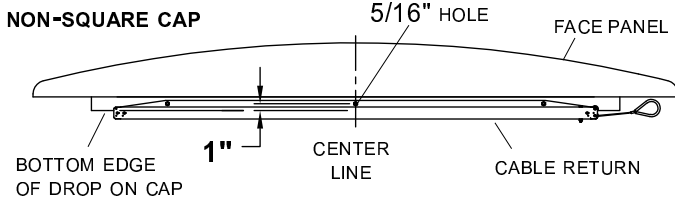
Square-cornered or extra-wide cap: Center and align cable return on face panel.

Non-square cornered cap: Center and align cable return on bottom edge of drop on front cap.



STEP 1: Mark face panel on center line 3 1/8" above upper edge of top rail.

Non-square cap: Mark point on center line of face panel 1" above bottom edge of cap.



STEP 2: Center punch and drill 5/16" hole at mark.

STEP 3: Align center mounting hole on return to drilled hole in cap and fasten with 3/8" x 1" self-tapping screw, lock washer and hex nut.

Extra wide: Align center mounting hole on back plate and on return with drilled hole in cap and fasten with 3/8" x 1" self-tapping screw, lock washer and hex nut.

STEP 4: Align cable return with top rail on box.

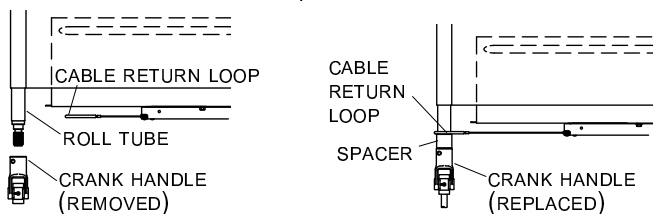
NOTE: Cable return must be parallel with top rail.

STEP 5: Mark other mounting holes and repeat steps 2 and 3.

STEP 6: Release tarp from latchplate and let hang over side of trailer.

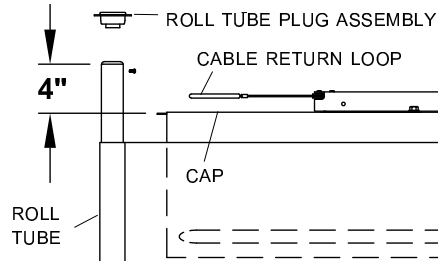
STEP 7: Remove crank handle.

STEP 8: Slide cable return loop over roll tube and reinstall crank handle.



NOTE: Steps 9 to 11 for front return only.

STEP 9: Extend roll tube at least 4" beyond edge of cap. Roll tube (P/N 1119434) may be used if additional length is required.



STEP 10: Slide cable return loop over roll tube.

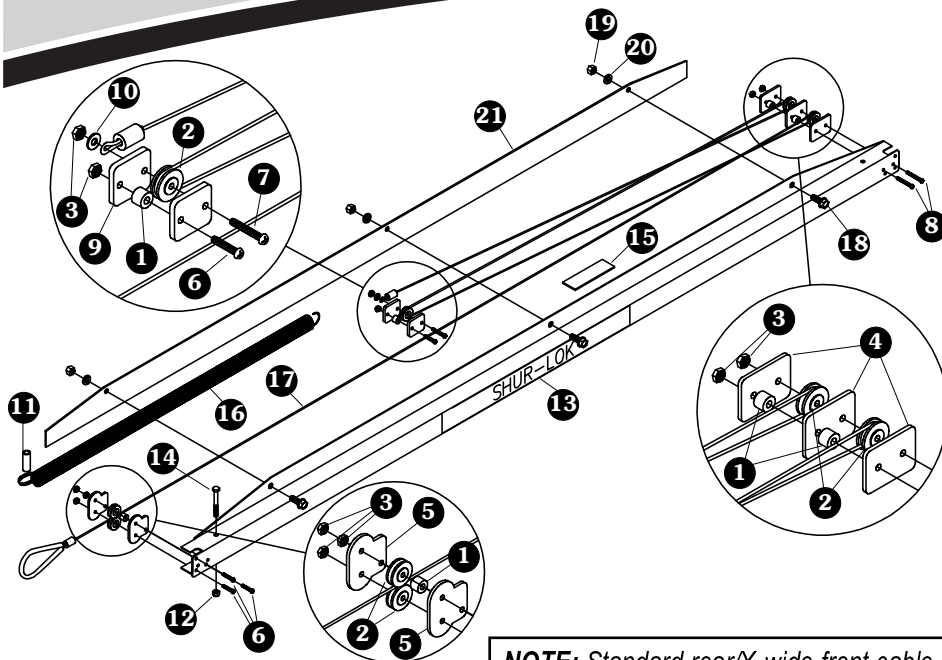
STEP 11: Press fit roll tube plug assembly into roll tube.

SEE PARTS LIST ON OTHER SIDE

NOTES

1. A spacer may be installed on roll tube to separate cable loop from weld and/or to bring cable into alignment with pulleys. Shur-Co® recommends using 2-SCH 40 PVC pipe cut to length and deburred.
2. To ensure maximum cable life, adjust cable as necessary to prevent cable from rubbing on any obstructions.
3. Inspect roll tube for weld splatter or debris, grinding smooth, if necessary.
4. Shur-Co® recommends replacing cable assembly every two (2) years for optimum performance.
5. On existing systems, be sure roll tube extends at least 4" beyond front of trailer. Optional roll tube (P/N 1119434) may be required.
6. If mounting on extra-wide flat cap, additional bracketry may be required. Distance from top of top rail to center of hole must be at least 2".

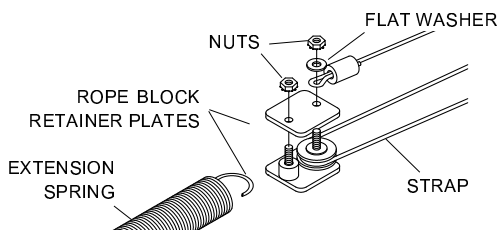




Item	Part #	Description
	111121	Rear Cable Return Kit
	111122	Front Cable Return Kit
	1114913	X-Wide Rear Cable Return Kit
	1114914	X-Wide Front Cable Return Kit
	1124756	Rear Cable Return Kit w/Cable Guide
	1124757	Front Cable Return Kit w/Cable Guide
	1124868	Rear Cable Return Kit - 3"
	1124869	Front Cable Return Kit - 3"
	1124905	Rear Cable Return Kit w/Ext. Tube
	1124906	Front Cable Return Kit w/Ext. Tube
1.	1111056	Spacer Washer - 1/2" x 3/8"
2.	1703006	Pulley
3.	1702653	Nut - #10 w/Tooth
4.	1110913	Rear Retainer Plate
5.	1114691	Front Retainer Plate
6.	1702654	Machine Screw - #10 x 1"
7.	1702655	Machine Screw - #10 x 1 1/4"
8.	1702656	Machine Screw - #10 x 1 1/2"
9.	1112997	Rope Block Retainer Plate
10.	1111054	Flat Washer - #10
11.	1115014	Spacer Washer - 5/8" x 1 5/8"
12.	1701543	Nylon Lock Nut - 1/4"
13.	1114728	Cable Return Housing
14.	1112902	Cable Return Housing - X-Wide
15.	1702672	Cap Screw - 1/4" x 2 1/4"
16.	1115206	Velcro® Hook Fastener
17.	1702657	Extension Spring
	1702896	Extension Spring - Heavy Duty
	1114582	Replacement Strap
	1114932	Replacement Strap - X-Wide
	1124800	Replacement Strap - 3"
18.	1700400	Self-Tapping Screw - 3/8"
19.	1700407	Hex Nut - 3/8"
20.	1700434	Lock Washer - 3/8"
21.	1112904	Back Plate - X-Wide

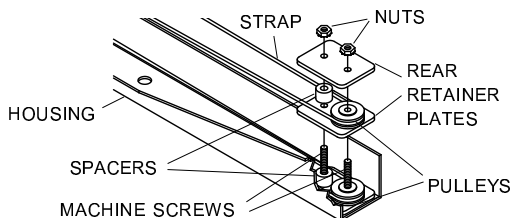
NOTE: Standard rear/X-wide front cable return shown. Standard front/X-wide rear cable return is reversed.

- STEP 1:** Remove end loop on cable return from roll tube. Remove screws and entire cable return system from end cap.
- STEP 2:** Carefully release tension from cable and extension spring. Hold spring with vise grips and remove nuts from rope block assembly.



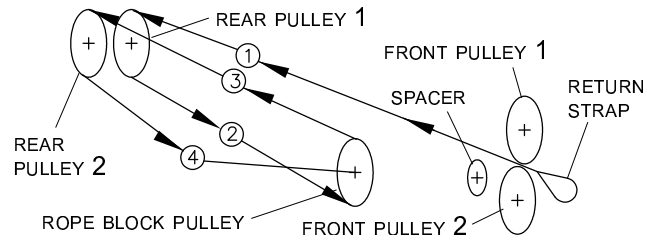
CAUTION
Spring and cable are under tension. Maintain control of spring while releasing tension to prevent personal injury.

- STEP 3:** Remove nuts from front and rear retainer plates. Remove retainer plates as required.



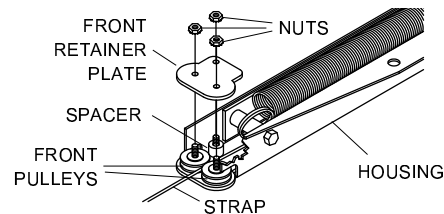
- STEP 4:** Remove and replace damaged cable with replacement cable assembly according to wire routing diagram shown below.

NOTE: Strap must go OVER spacer in order for system to work.



WIRE ROUTING

- STEP 5:** Reinstall retainer plates and rope block plates. Attach nuts and tighten securely.
- STEP 6:** Reinstall cable return system on end cap and slide end loop on cable return over roll tube.



NOTE: Test operation. Inspect system periodically. Replace damaged or worn parts to prevent personal injury or system failure.

