



TARP SYSTEMS & ACCESSORIES

READ BEFORE INSTALLING

P/N 1120858 Rev. J

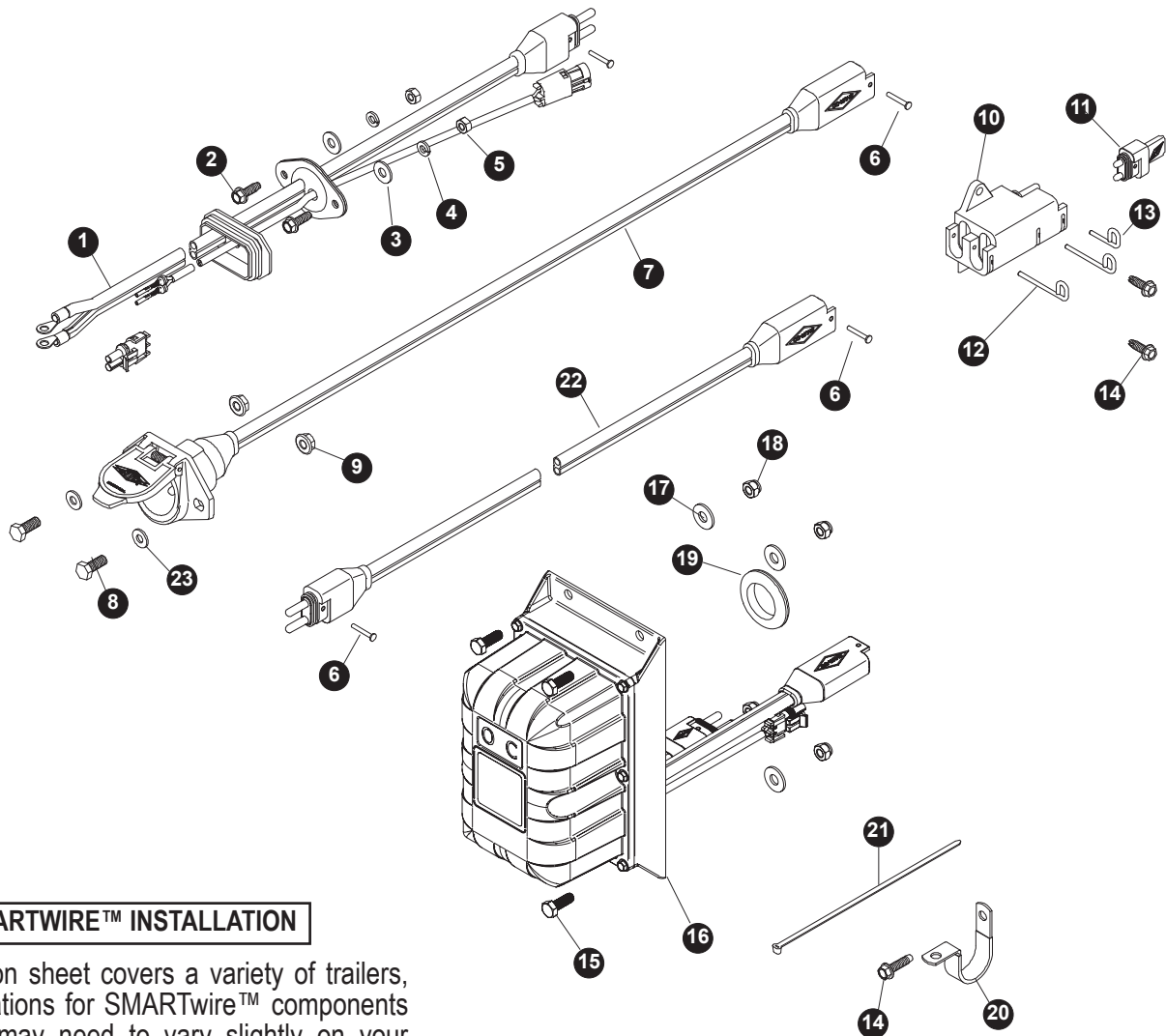
Wiring 4500 Series

INSTALLATION INSTRUCTIONS



2309 SHUR-LOK STREET • YANKTON, SD 57078-0713
PHONE: 1-800-SHUR-LOK (1-800-474-8756) • FAX: 1-605-665-0501
www.SHURCO.com

SHOP ONLINE: www.SHOPSHURCO.com



SMARTWIRE™ INSTALLATION

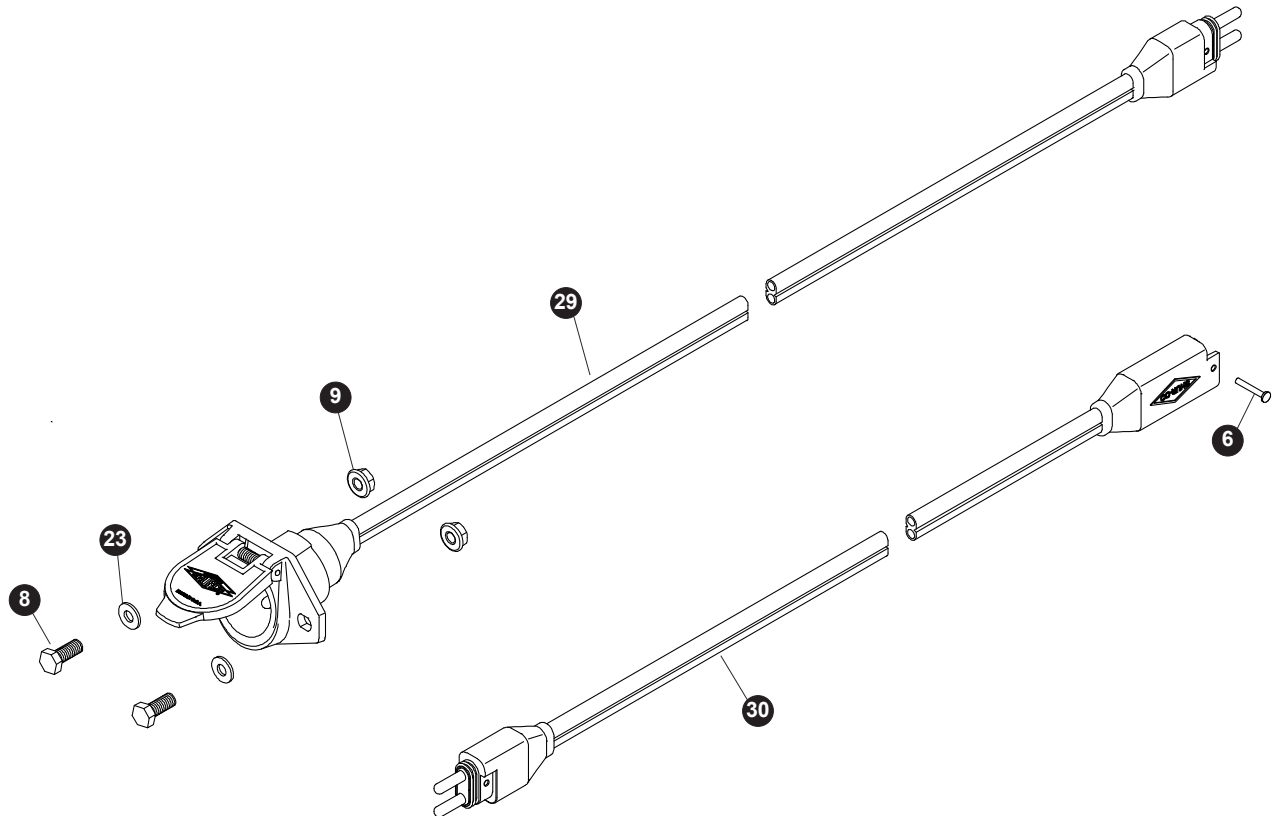
This instruction sheet covers a variety of trailers, therefore locations for SMARTwire™ components shown here may need to vary slightly on your trailer. Mounting locations are critical because wire lengths cannot be altered. Mounting SMARTwire™ components as close as possible to locations shown will not only ensure quick and easy installation but also facilitate SMARTwire™ upgrades.

Item Part # Description

- 1. SMARTwire™ - 6 Ga. - Plug - 9'-9" w/Encoder Wire
- 2. 1700403 Self-Tapping Screw - 1/4" x 3/4"
- 3. 1700427 Flat Washer - 1/4"
- 4. 1700436 Lock Washer - 1/4"
- 5. 1700408 Hex Nut - 1/4"
- 6. 1704751 Harness Lock Pin - 1/4" x 7/8"
- 7. 1120670 SMARTwire™ Dual-Conductor Socket
- 8. 1701045 Cap Screw - 5/16" x 3/4"
- 9. 1704946 Flanged Top Lock Nut - 5/16"
- 10. 1704695 Harness Junction Block
- 11. 1704717 Wire Harness Rubber Plug
- 12. 1704696 Harness Lock Pin - Long

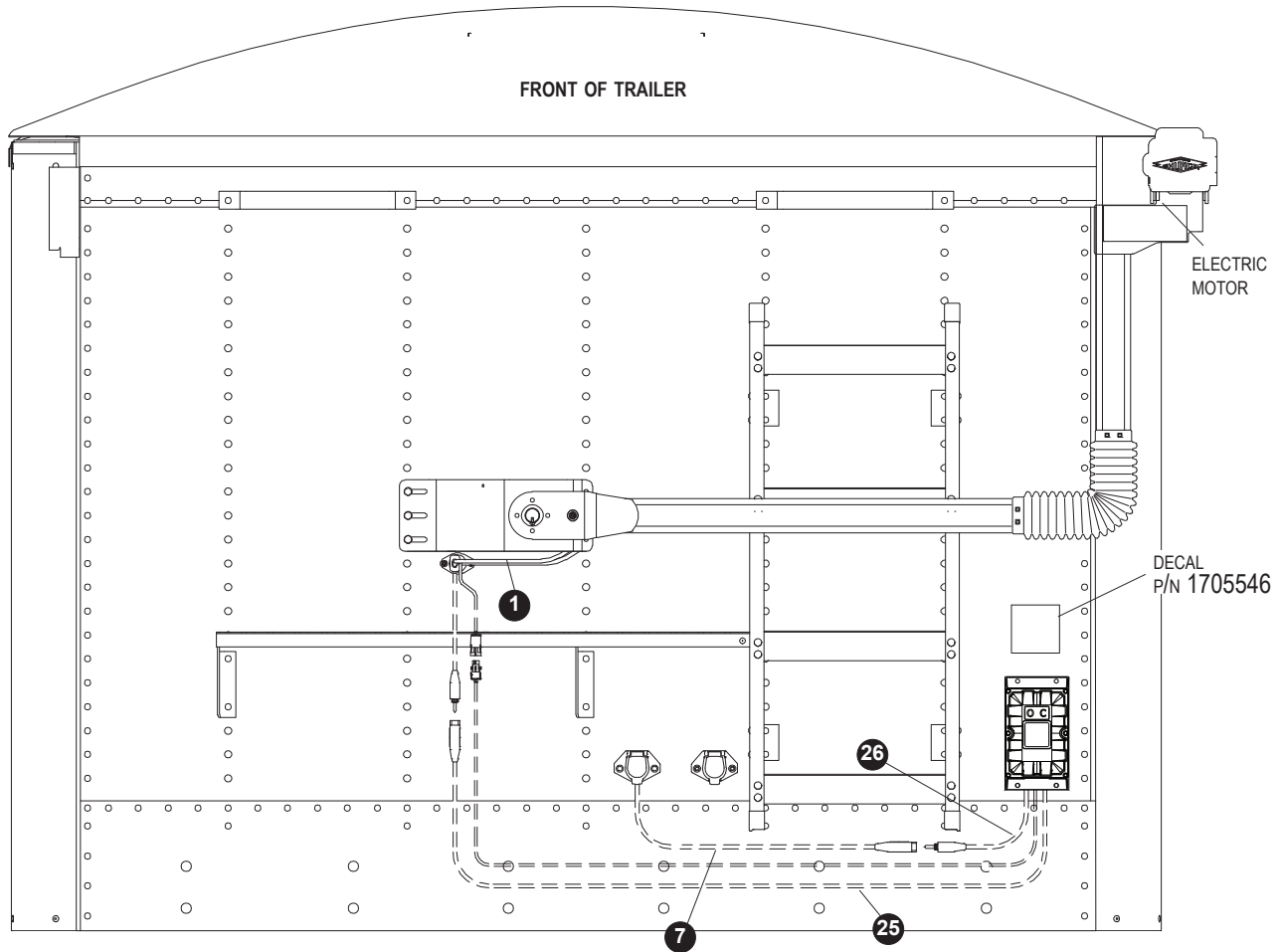
Item Part # Description

- 13. 1704711 Harness Lock Pin - Short
- 14. 1704338 Self-Tapping Screw - 1/4" x 1"
- 15. 1702926 Cap Screw - 5/16" x 7/8"
- 16. ShurLink™ Wireless Receiver
- 17. 1700428 Flat Washer - 5/16"
- 18. 1700419 Lock Nut - 5/16"
- 19. 1202938 Rubber Grommet - 1-1/2" Insert
- 20. 1702108 Wire Clip - 3/4"
- 21. 1703231 Cable Tie - 8"
- 22. 1704704 SMARTwire™ - 6 Ga. x 25' - Plug/Socket
- 23. 1700427 Flat Washer - 1/4"



**LEAD TRAILER WIRING PARTS FOR SUPPLYING
POWER TO REAR/PUP TRAILERS**

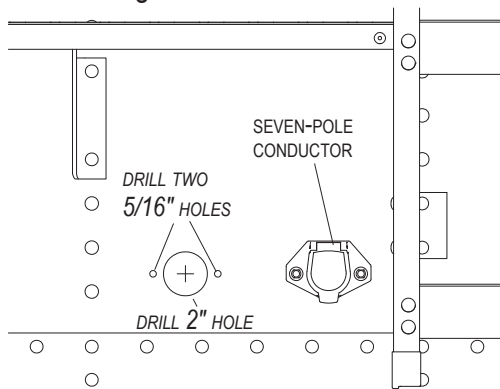
Item	Part #	Description
6.	1704751	Harness Lock Pin - 1/4" x 7/8"
8.	1701045	Cap Screw - 5/16" x 3/4"
9.	1704946	Flanged Top Lock Nut - 5/16"
23.	1700427	Flat Washer - 1/4"
29.	1122541	SMARTwire™ - 4 Ga. x 22' - Dual-Conductor Socket
	1122542	SMARTwire™ - 4 Ga. x 32' - Dual-Conductor Socket
	1122543	SMARTwire™ - 4 Ga. x 40' - Dual-Conductor Socket
30.	1704888	SMARTwire™ - 4 Ga. x 25' - Plug/Socket



NOTE: Wire lengths are predetermined. Before installing SMARTwire™ components, review and confirm wire routing so wires reach components with ample room for connection.

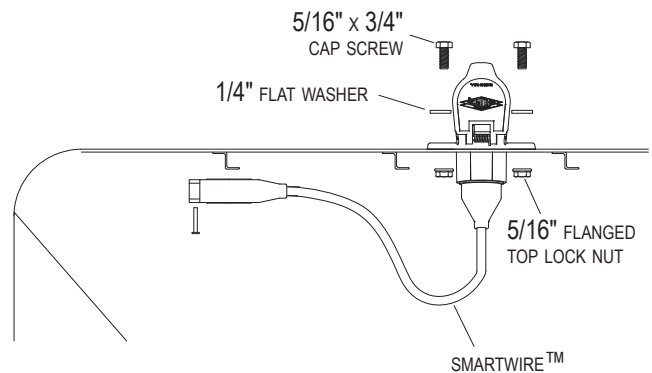
DUAL-POLE CONDUCTOR SOCKET INSTALLATION

STEP 1: Locate dual-pole conductor socket near seven-pole conductor socket as shown. Determine location and drill 2 inch hole through trailer skin.



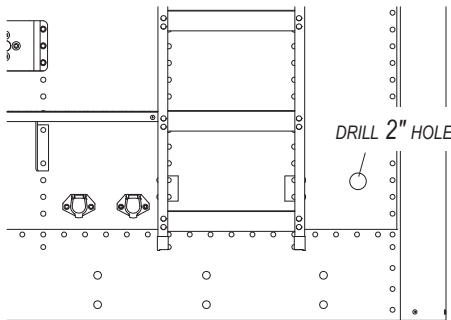
STEP 2: Align socket over 2 inch hole. Using holes in flanges on socket as guide, mark and drill two 5/16 inch holes.

STEP 3: Fasten conductor socket to trailer with 5/16 inch x 3/4 inch cap screws, flat washers and nuts.

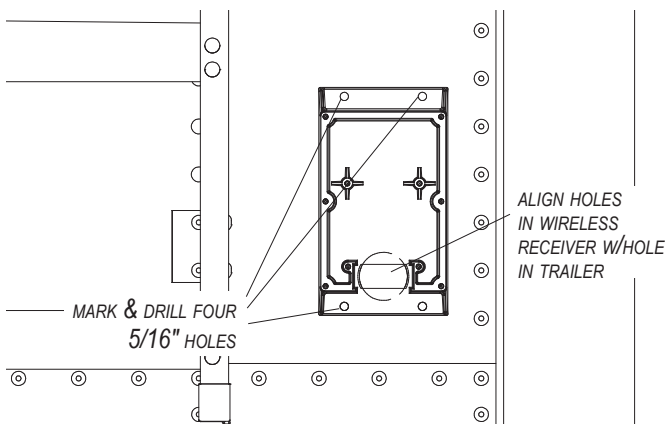


SHUR-CO® WIRELESS RECEIVER INSTALLATION

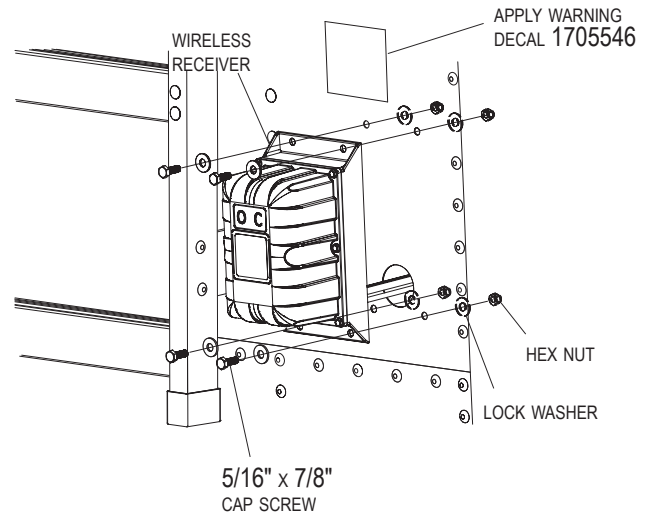
STEP 1: In order to clear travel area of front arm, locate Shur-Co® wireless receiver as low as possible on front of trailer. Determine location and drill 2 inch hole through trailer skin.



STEP 2: Align hole in wireless receiver over 2 inch hole in trailer as shown below. Using holes in flanges on receiver base as guide, mark and drill four 5/16 inch holes as shown.

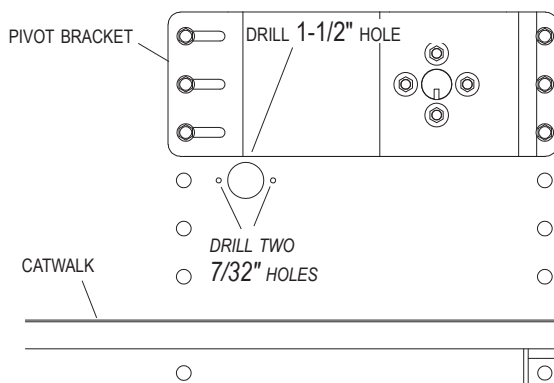


STEP 3: Align holes on wireless receiver with holes on trailer. Fasten receiver to trailer with 5/16" x 7/8" cap screws, lock washers and nuts. Apply warning decal P/N 1705546 above receiver in location shown.



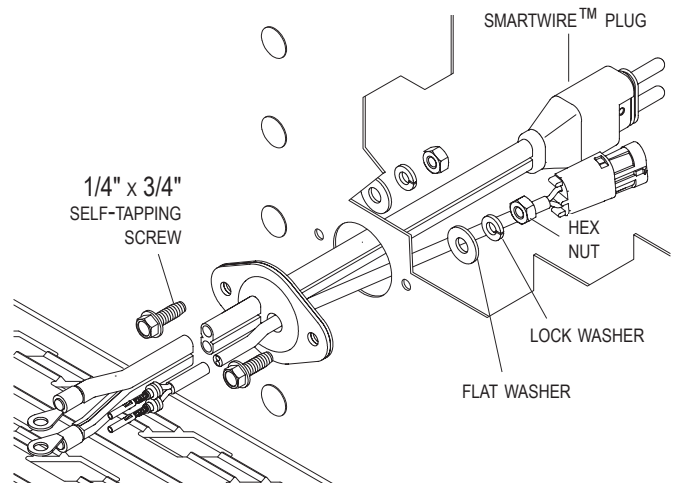
ADAPTER PLUG INSTALLATION

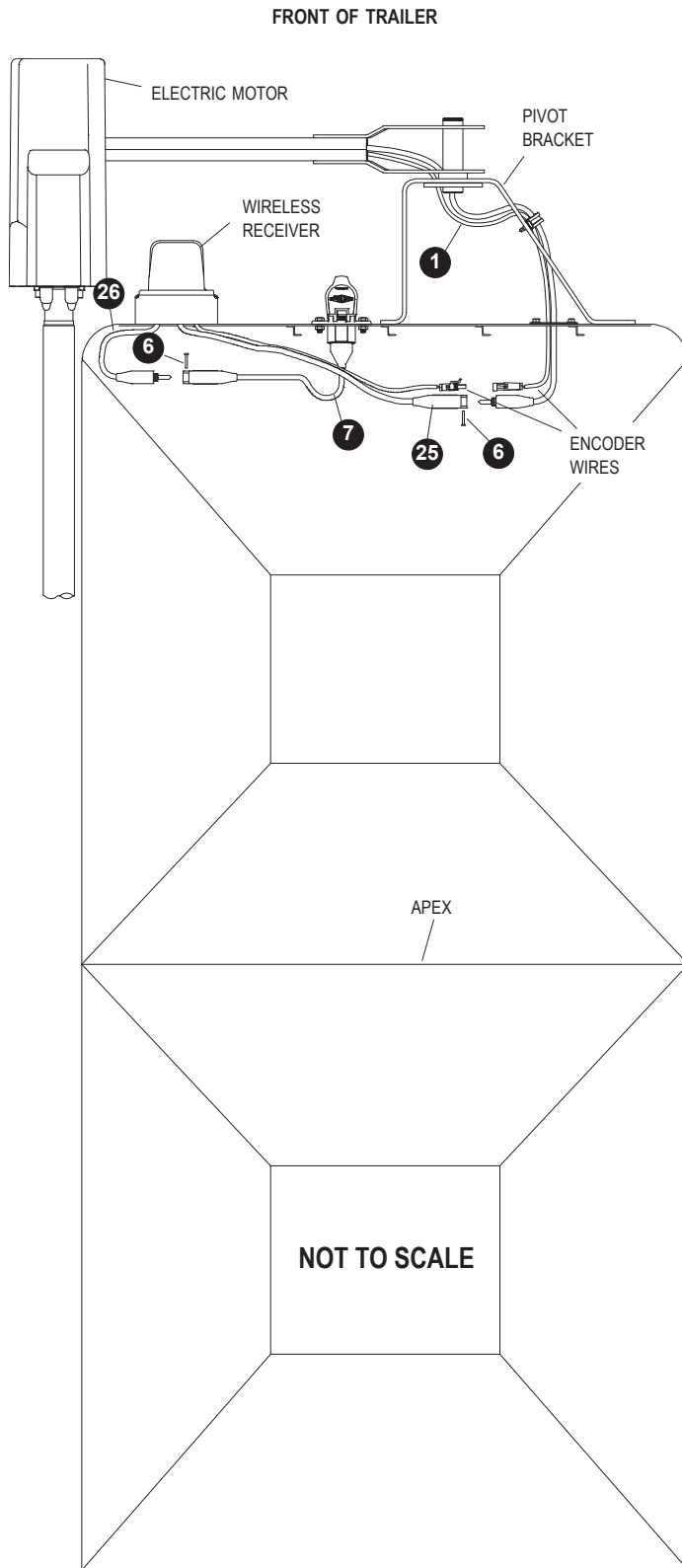
STEP 1: Measure 11 inches horizontally from center line of trailer and 1 inch down from lower edge of pivot bracket. Mark and drill 1-1/2 inch hole through trailer skin.



STEP 2: Align adapter plug with 1-1/2 inch hole. Using plug as guide, mark and drill two 7/32 inch holes as shown.

STEP 3: Fasten adapter plug to front of trailer with 1/4 inch x 3/4 inch cap screws, lock washers and nuts.





NOTE: Coat each connection with dielectric grease (P/N 1704378) to prevent corrosion.

CAUTION
Do not fasten SMARTwire™ components to trailer through hopper walls.

FRONT OF TRAILER

STEP 1: Route SMARTwire™ (25) from wireless receiver to adapter plug (1). Connect wire to adapter plug and secure with lock pin (6). Connect encoder wire ends.

STEP 2: Connect SMARTwire™ (26) from wireless receiver into SMARTwire™ (7) and secure connection with lock pin (6).

STEP 3: Secure all wires to trailer with cable clips (20) and screws (14). If needed, use cable ties (21).

NOTE: For lead/pup trailer configurations, continue on next page.

NOTE: Coat each connection with dielectric grease (P/N 1704378) to prevent corrosion.

CAUTION

Do not fasten SMARTwire™ components to trailer through hopper walls.

FRONT OF TRAILER

STEP 1: Remove lock pin (6) from SMARTwire™ (7) and disconnect wires.

STEP 2: To determine location of junction block (10), route SMARTwires (7) and (26) to location where wires reach. Mount junction block (10) at this location. Using holes in junction block as guide, mark and drill two 7/32 inch holes.

STEP 3: Fasten junction block (10) to trailer with screws (14).

STEP 4: Connect SMARTwires (7), (26) and (30) to junction block (10). Insert plug (11) into remaining socket. Secure connections with lock pins (12) and (13).

STEP 5: Route SMARTwire™ (30) towards rear of trailer.

REAR OF TRAILER

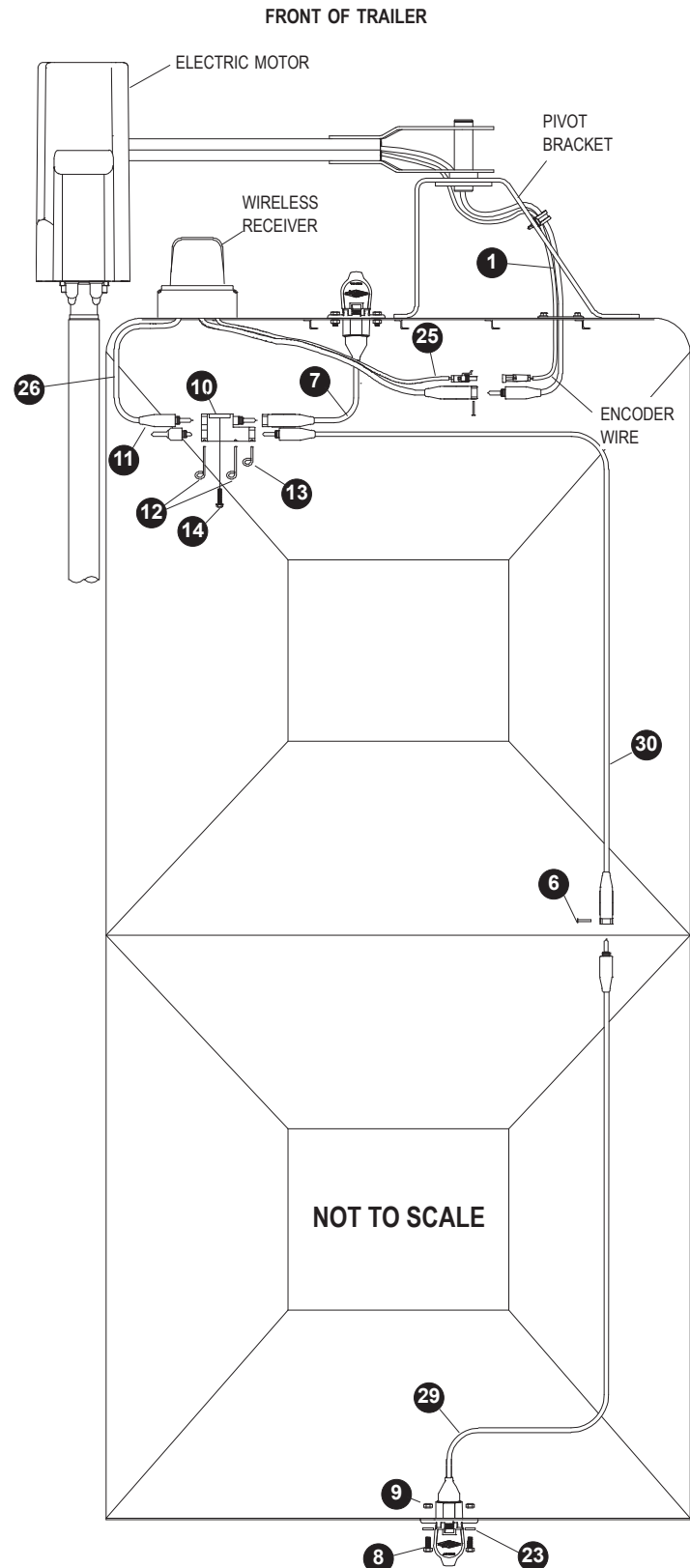
STEP 6: To determine location for conductor socket (29) on rear of trailer, route SMARTwire™ (30) and SMARTwire™ from conductor socket (29) to location near middle of trailer where wires reach. Mount conductor socket at this location.

STEP 7: Follow STEPS 1 to 3 on page 3 to install conductor socket (29).

MIDDLE OF TRAILER

STEP 8: Connect SMARTwires (30) and (29). Secure with lock pin (6).

STEP 9: Secure all wires to trailer with cable clips (20) and screws (14). If needed, use cable ties (21).



2309 SHUR-LOK STREET • YANKTON, SD 57078-0713
PHONE: 1-800-SHUR-LOK (1-800-474-8756) • FAX: 1-605-665-0501
www.SHURCO.com