



TARPING SYSTEMS & ACCESSORIES

P/N 1120886 Rev. H

# INSTALLATION INSTRUCTIONS

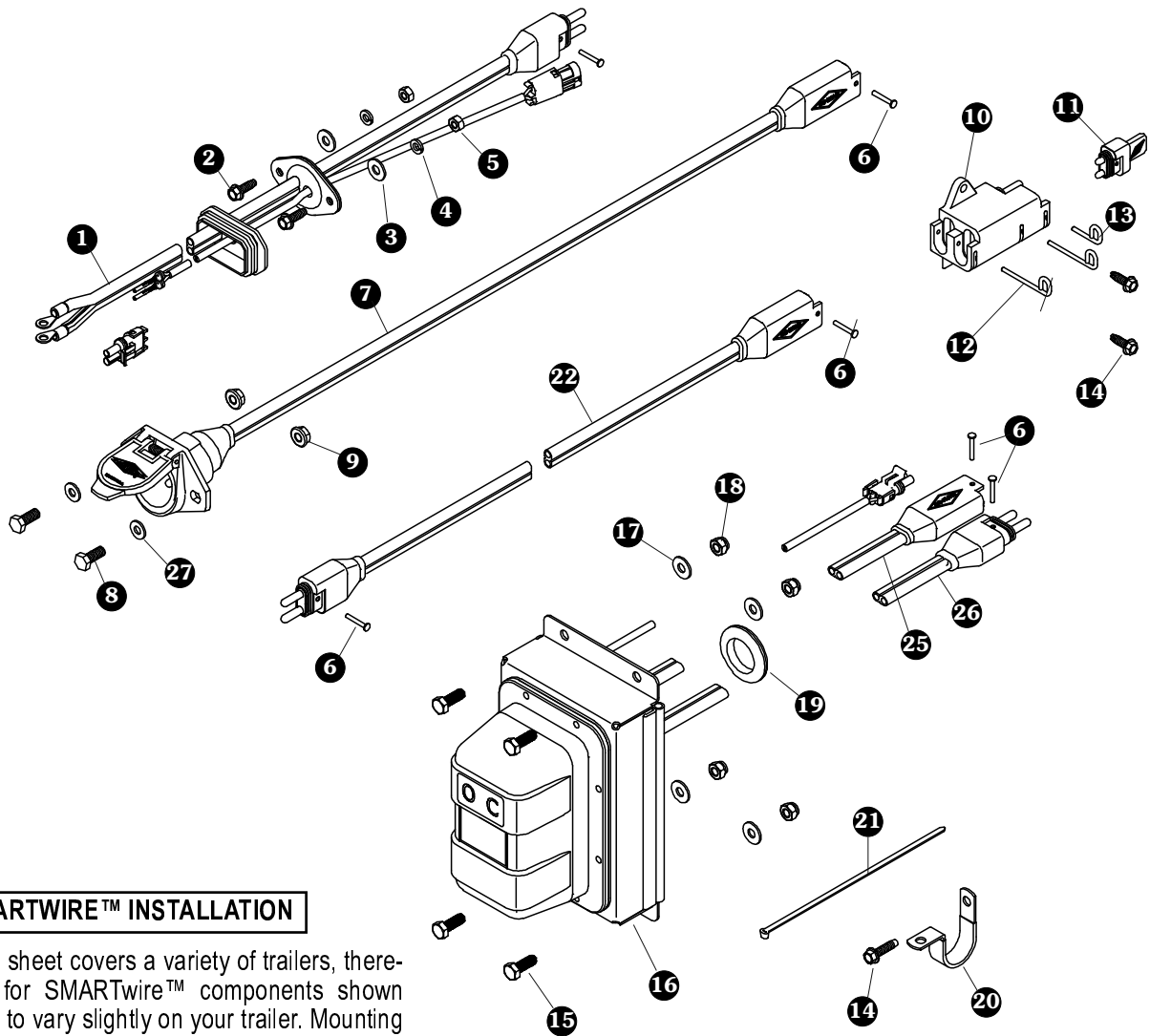


## Wiring 4500 Series & Four ProTraps

*READ BEFORE INSTALLING*

PO BOX 713 ■ 2309 SHUR-LOK STREET ■ YANKTON, SD 57078-0713  
PHONE 1-800-4-SHUR-LOK (1-800-474-8756) ■ FAX 605-665-0501  
[www.shurco.com](http://www.shurco.com)

SHOP ONLINE: [www.shopshurco.com](http://www.shopshurco.com)

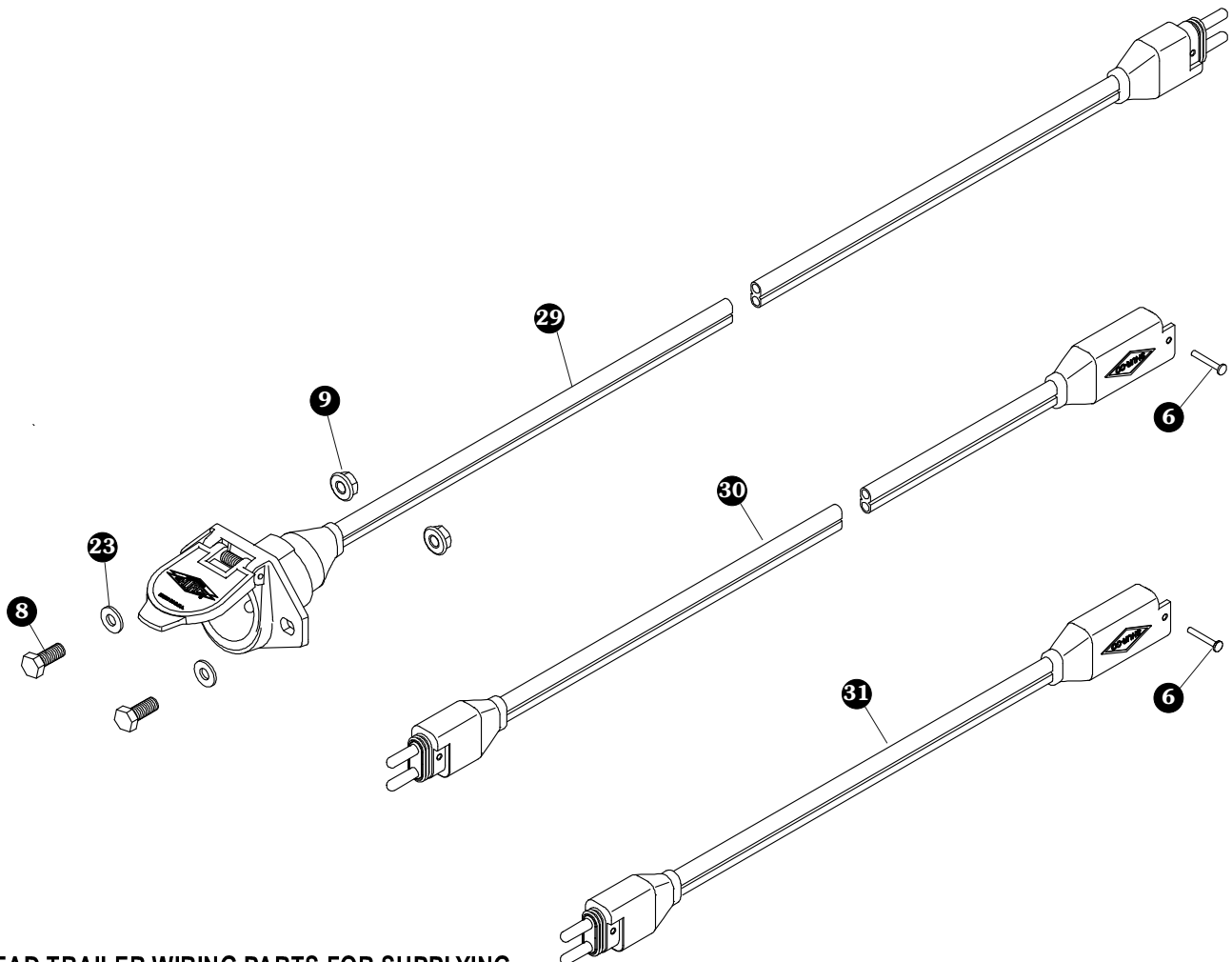


**SMARTWIRE™ INSTALLATION**

This instruction sheet covers a variety of trailers, therefore locations for SMARTwire™ components shown here may need to vary slightly on your trailer. Mounting locations are critical because wire lengths cannot be altered. Mounting SMARTwire™ components as close as possible to locations shown will not only ensure quick and easy installation but also facilitate SMARTwire™ upgrades.

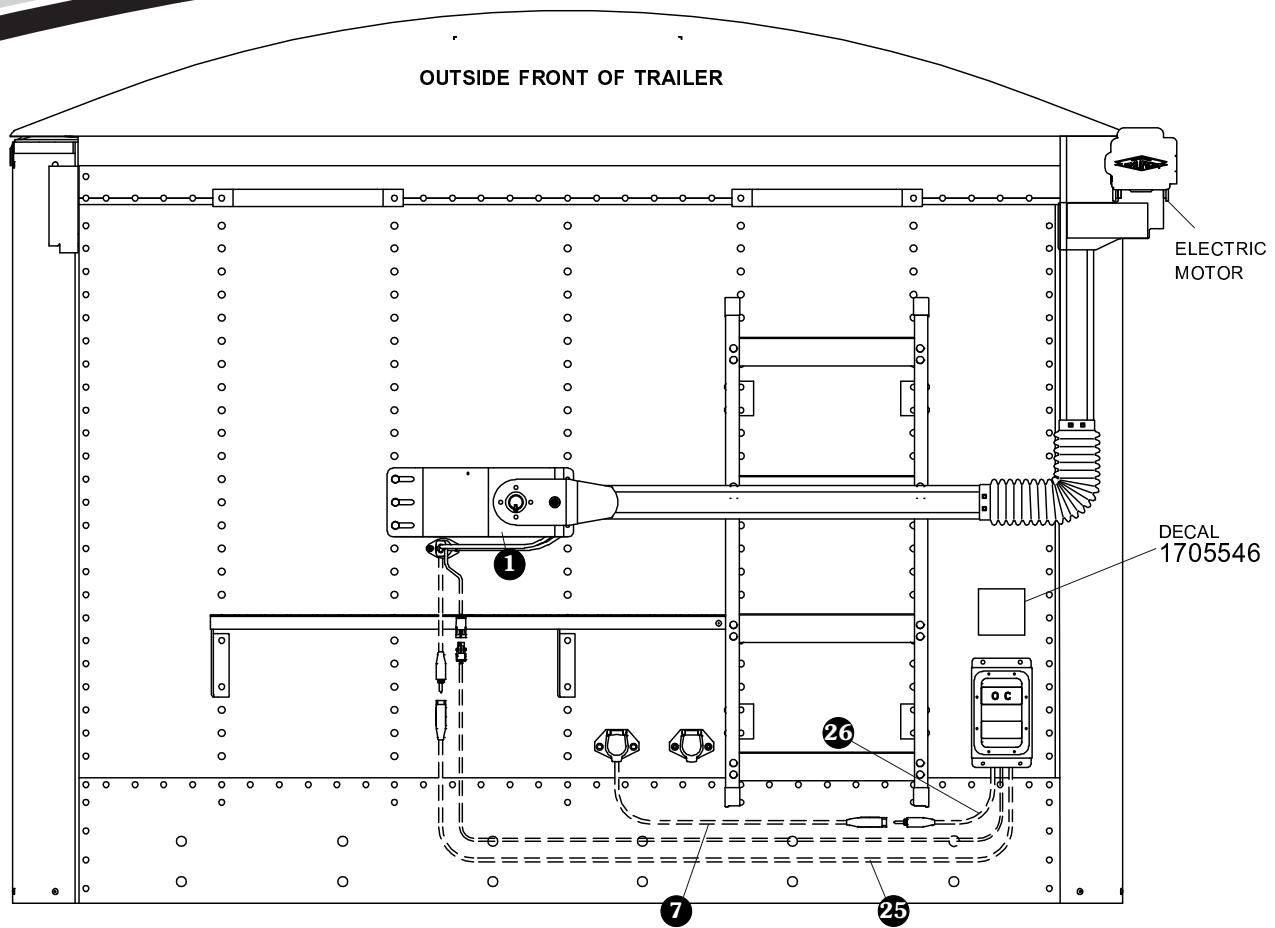
Item	Part #	Description
1.		SMARTwire™ - 6 Ga. - Plug - 9' 9" w/Encoder Wire
2.	1700403	Self-Tapping Screw - 1/4" x 3/4"
3.	1700427	Flat Washer - 1/4"
4.	1700436	Lock Washer - 1/4"
5.	1700408	Hex Nut - 1/4"
6.	1704751	Harness Lock Pin - 1/4" x 7/8"
7.	1120670	SMARTwire™ Dual-Conductor Socket
8.	1701045	Cap Screw - 5/16" x 3/4"
9.	1704946	Flanged Top Lock Nut - 5/16"
10.	1704695	Harness Junction Block
11.	1704717	Wire Harness Rubber Plug
12.	1704696	Harness Lock Pin - Long

Item	Part #	Description
13.	1704711	Harness Lock Pin - Short
14.	1704338	Self-Tapping Screw - 1/4" x 1"
15.	1702926	Cap Screw - 5/16" x 7/8"
16.		Shur-Co® Wireless Receiver - SMARTWire™
17.	1700428	Flat Washer - 5/16"
18.	1700419	Lock Nut - 5/16"
19.	1202938	Rubber Grommet - 1 1/2" Insert
20.	1702108	Wire Clip - 3/4"
21.	1703231	Cable Tie - 8"
22.	1704704	SMARTwire™ - 6 Ga. x 25' - Plug/Socket
25.	1120817	SMARTwire™ - 6 Ga. x 6' 3" - Socket
26.	1704705	SMARTwire™ - 6 Ga. x 2' 4" - Plug
27.	1700427	Flat Washer - 1/4"



**LEAD TRAILER WIRING PARTS FOR SUPPLYING POWER TO REAR/PUP TRAILERS**

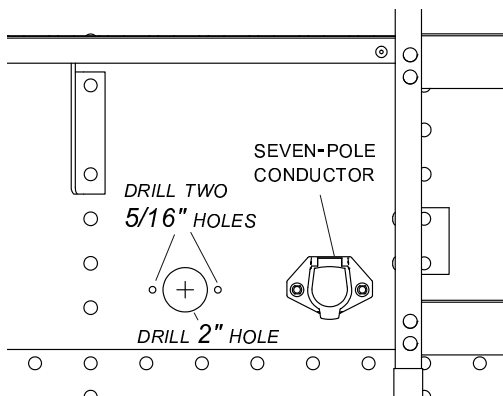
Item	Part #	Description
6.	1704751	Harness Lock Pin - 1/4" x 7/8"
8.	1701045	Cap Screw - 5/16" x 3/4"
9.	1704946	Flanged Top Lock Nut - 5/16"
23.	1700427	Flat Washer - 1/4"
29.	1122541	SMARTwire™ - 4 Ga. x 22' - Dual-Conductor Socket
	1122542	SMARTwire™ - 4 Ga. x 32' - Dual-Conductor Socket
	1122543	SMARTwire™ - 4 Ga. x 40' - Dual-Conductor Socket
30.	1704888	SMARTwire™ - 4 Ga. x 25' - Plug/Socket
31.	1704857	SMARTwire™ - 6 Ga. x 1' - Plug/Socket



**NOTE:** Wire lengths are predetermined. Before installing SMARTwire™ components, review and confirm wire routing so wires reach components with ample room for connection.

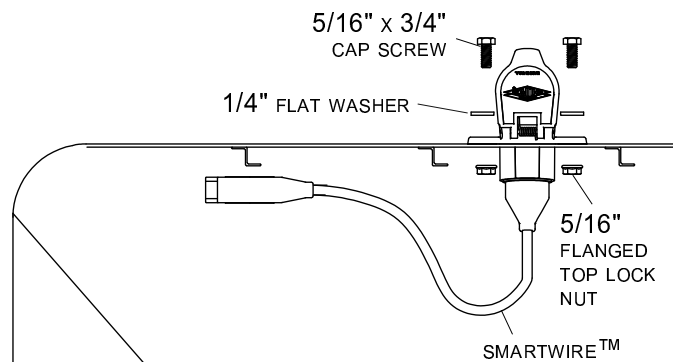
**DUAL-POLE CONDUCTOR SOCKET INSTALLATION**

**STEP 1:** Locate dual-pole conductor socket near seven-pole conductor socket as shown. Determine location and drill 2" hole through trailer skin.



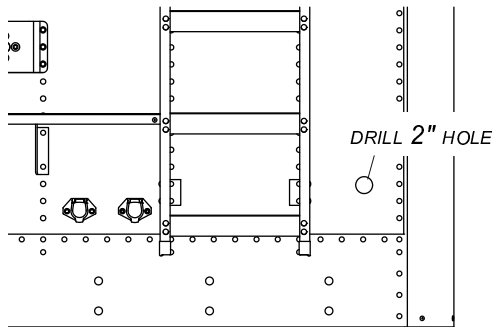
**STEP 2:** Align socket over 2" hole. Using holes in flanges on socket as guide, mark and drill two 5/16" holes.

**STEP 3:** Fasten conductor socket to trailer with 5/16" x 3/4" cap screws, flat washers and nuts.

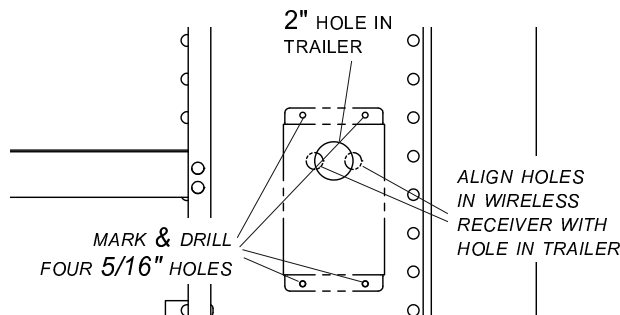


**SHUR-CO® WIRELESS RECEIVER INSTALLATION**

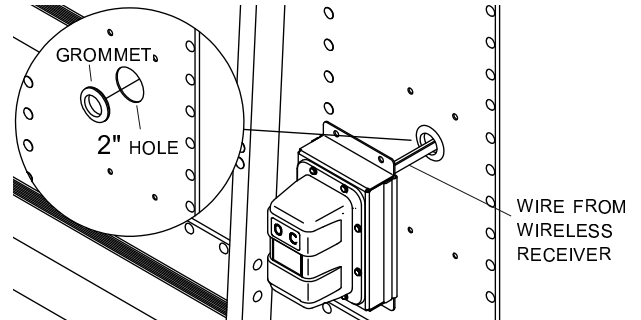
**STEP 1:** In order to clear travel area of front arm, locate Shur-Co® wireless receiver as low as possible on front of trailer. Determine location and drill 2" hole through trailer skin.



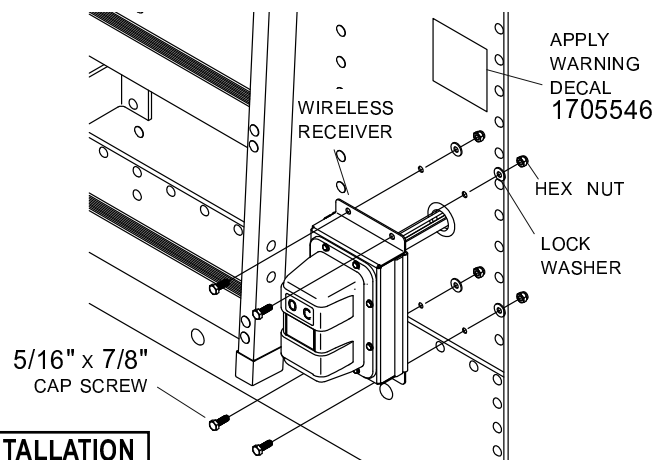
**STEP 2:** Align holes in wireless receiver over 2" hole in trailer as shown below. Using holes on flanges on receiver as guide, mark and drill four 5/16" holes as shown.



**STEP 3:** Install grommet into 2" hole. Insert wire from wireless receiver through grommet.

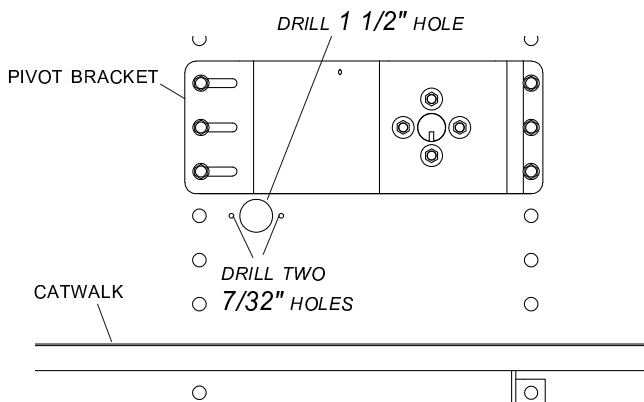


**STEP 4:** Align holes on wireless receiver with holes on trailer. Fasten receiver to trailer with 5/16" x 7/8" cap screws, lock washers and nuts. Adhere warning decal P/N 1705546 above receiver in location shown.



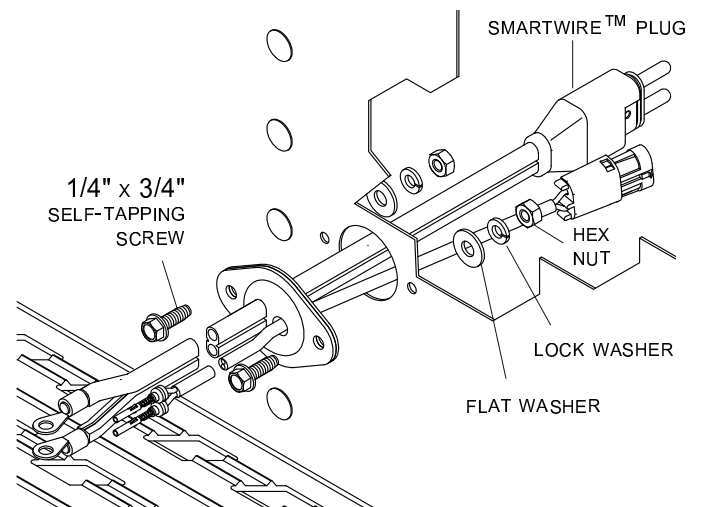
**ADAPTER PLUG INSTALLATION**

**STEP 1:** Measure 11" horizontally from center line of trailer and 1" down from lower edge of pivot bracket. Mark and drill 1 1/2" hole through trailer skin.



**STEP 2:** Align adapter plug with 1 1/2" hole. Using plug as guide, mark and drill two 7/32" holes as shown.

**STEP 3:** Fasten adapter plug to front of trailer with 1/4" x 3/4" cap screws, lock washers and nuts.

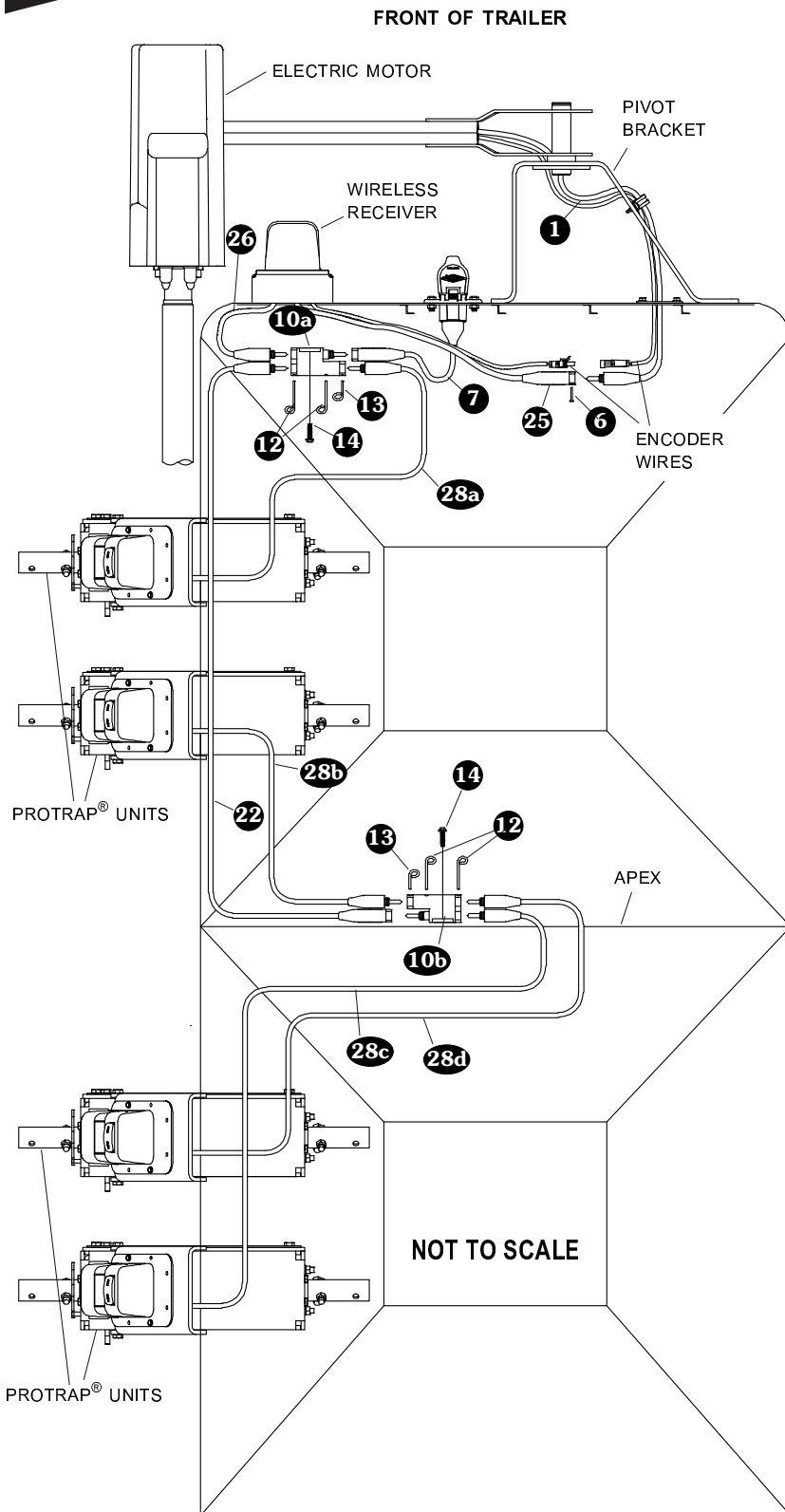


**NOTE:** Coat each connection with dielectric grease (P/N 1704378) to prevent corrosion.

**CAUTION**

**Do not fasten SMARTwire™ components to trailer through hopper walls.**

**NOTE:** If wiring lead/pup trailer, review page 6 before proceeding.



**FRONT OF TRAILER**

**STEP 1:** Route SMARTwire™ 25 from wireless receiver to adapter plug 1. Connect encoder wire ends. Connect wire to adapter plug and secure with lock pin 6.

**STEP 2:** To determine location of front junction block, route SMARTwires 7 and 26 to location where wires reach. Mount junction block 10a at this location. Using holes in junction block as guide, mark and drill two 7/32" holes.

**STEP 3:** Fasten junction block 10a to trailer with screws 14.

**STEP 4:** Connect SMARTwires 7, 22, 28a and 26 to junction block 10a. Secure connections with lock pins 12 and 13.

**STEP 5:** Route SMARTwire™ 22 from front to apex of trailer.

**APEX OF TRAILER**

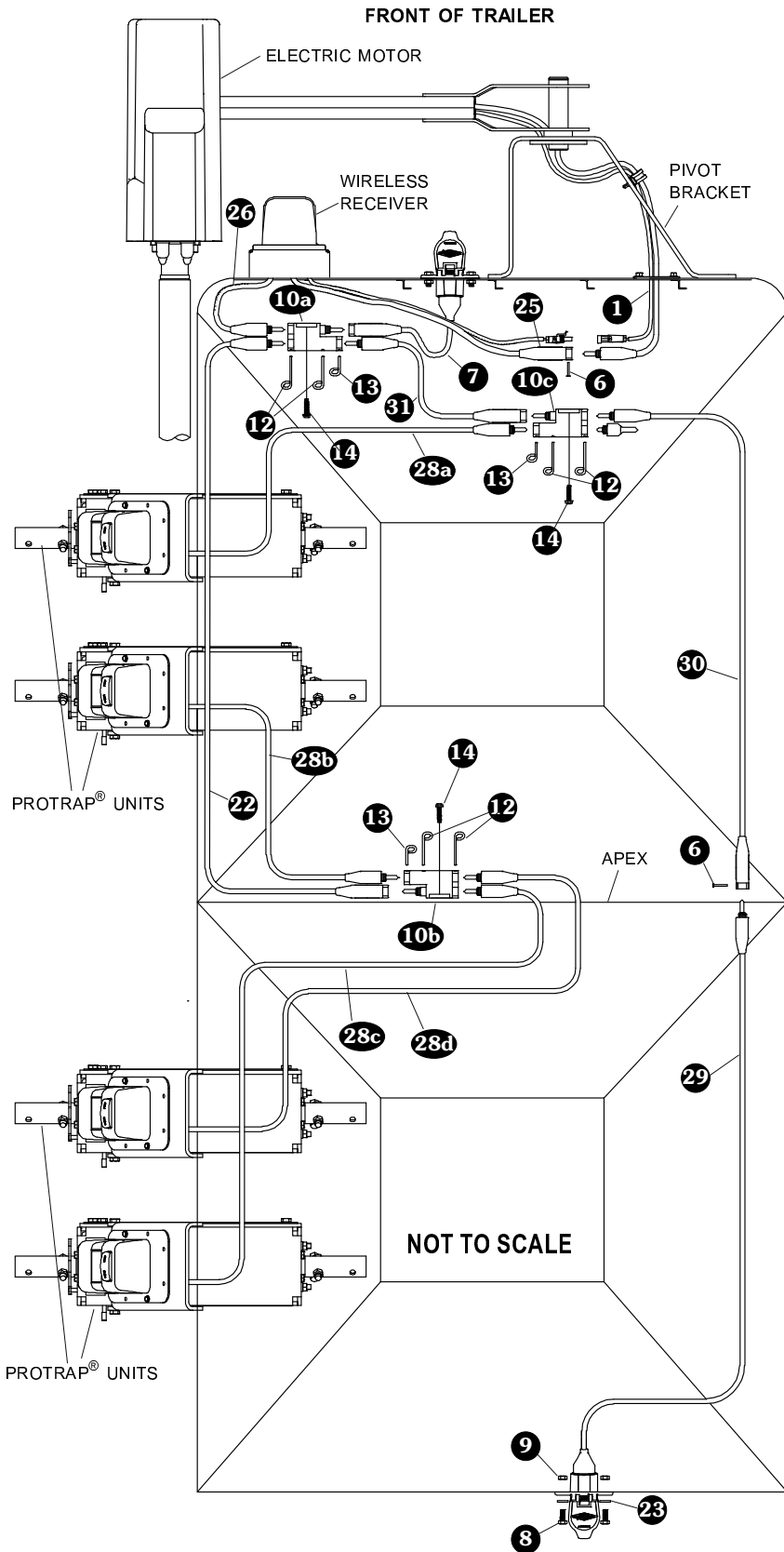
**STEP 6:** To determine location of second junction block, route SMARTwires 22, 28b, 28a and 28c to location near apex of trailer where wires reach. Mount junction block 10b at this location. Using holes in junction block as guide, mark and drill two 7/32" holes.

**STEP 7:** Fasten junction block 10b to trailer with screws 14.

**STEP 8:** Connect SMARTwires 22, 28b, 28c and 28d to junction block 10b at apex of trailer. Secure all connections with lock pins 12 and 13.

**STEP 9:** Secure all wires to trailer with cable clips 20 and screws 14. If needed, use cable ties 21.

**NOTE:** For lead/pup trailer configurations, continue on next page.



**NOTE:** Coat each connection with dielectric grease (P/N 1704378) to prevent corrosion.

**CAUTION**  
Do not fasten SMARTwire™ components to trailer through hopper walls.

**FRONT OF TRAILER**

**STEP 1:** Remove lock pin 13 and SMARTwire™ 28a from junction block 10a. Connect SMARTwire™ 31 to junction block 10a and secure with lock pin 13.

**STEP 2:** To determine location for junction block 10c, route SMARTwires 28a and 31 to where wires meet on front of trailer. Position junction block 10c at this location. Using holes in junction block as guide, mark and drill two 7/32" holes.

**STEP 3:** Fasten junction block 10c to trailer with screws 14.

**STEP 4:** Connect SMARTwires 31, 28a and 30 to junction block 10c, then insert plug 1. Secure with lock pins 12 and 13.

**STEP 5:** Route SMARTwire™ 30 towards rear of trailer.

**REAR OF TRAILER**

**STEP 6:** To determine location for conductor socket 29 on rear of trailer, route SMARTwire™ 30 and SMARTwire™ 29 from conductor socket 29 to location near middle of trailer where wires reach. Mount conductor socket at this location.

**STEP 7:** Follow steps 1 - 3 on page 3 to install conductor socket 29.

**MIDDLE OF TRAILER**

**STEP 8:** Connect SMARTwires 30 and 29. Secure with lock pin 6.

**STEP 9:** Secure all wires to trailer with cable clips 20 and screws 14. If needed, use cable ties 21.

# MORE QUALITY PRODUCTS FROM SHUR-CO®

- **Genuine Replacement Tarps**
- **Genuine Replacement Parts**
  
- **Agriculture Products**
  - Value Series Shur-Lok®
  - Super Duty Shur-Lok®
  - Shur-Lok® Junior
  - Premium Belt 'n Ratchet
  - Cable-Lok™
  - Turning Point™ Bow
  - Tater-Top™
  
- **SMARTrailer™ Accessories for Agriculture Products**
  - SMART2™ Remote
  - SMART1 +™ Remote
  - 4500 Series HD Electric
  - Electric Shur-Lok®
  - AutoTrap™ Hopper Opener
  - ProTrap® Hopper Opener
  - Electric Gate & Hoist
  - LiteALL™ Work Lights
  - Cable-Lok™ Electric Upgrade
  - Electric Turning Point™ Bow
  - Solar Power Pack
  
- **Flatbed Products**
  - ShurTite™ Retractable Tarps
  - Stock Lumber & Steel Tarps
  
- **Custom Products**
  - Fitted Truck Covers
  - Flat Utility Tarps
  - Bean Drill Covers
  - Shur-Lok® Tarp Cords
  - Gustbuster™ Tarp Cords
  
- **Construction Products**
  - Super Duty Shur-Lok®
  - Shur-Trak II™
  - Cover-Pro II®
  - Turning Point™ Bow
  - IronSide™ Side-Dump System
  - Arm-Matic™
  - DuraPull™
  - Econo-Pull™
  - Turbo Tarp2™
  - 2000 Series
  - 5000 Series
  - Hammer™
  - Bullet™
  - Flash™
  - Long Arm™
  
- **SMARTrailer™ Accessories for Construction Products**
  - 4500 Series HD Electric w/Gate Flex™
  - Shur-Trak II™ Electric Upgrade
  - Cover-Pro II® Electric Upgrade
  - Electric Turning Point™ Bow
  - Solar Power Pack
  
- **Waste Products**
  - SWAT™
  - The Ox™
  - Quick-Flip III™
  - Sidewinder™
  - Sidewinder™ 350
  - HyTower™ SL
  - HyTower™ DL
  - Double-Flip™

TARPING SYSTEMS & ACCESSORIES

