



TARPING SYSTEMS & ACCESSORIES

P/N 1121005 Rev. F

INSTALLATION INSTRUCTIONS

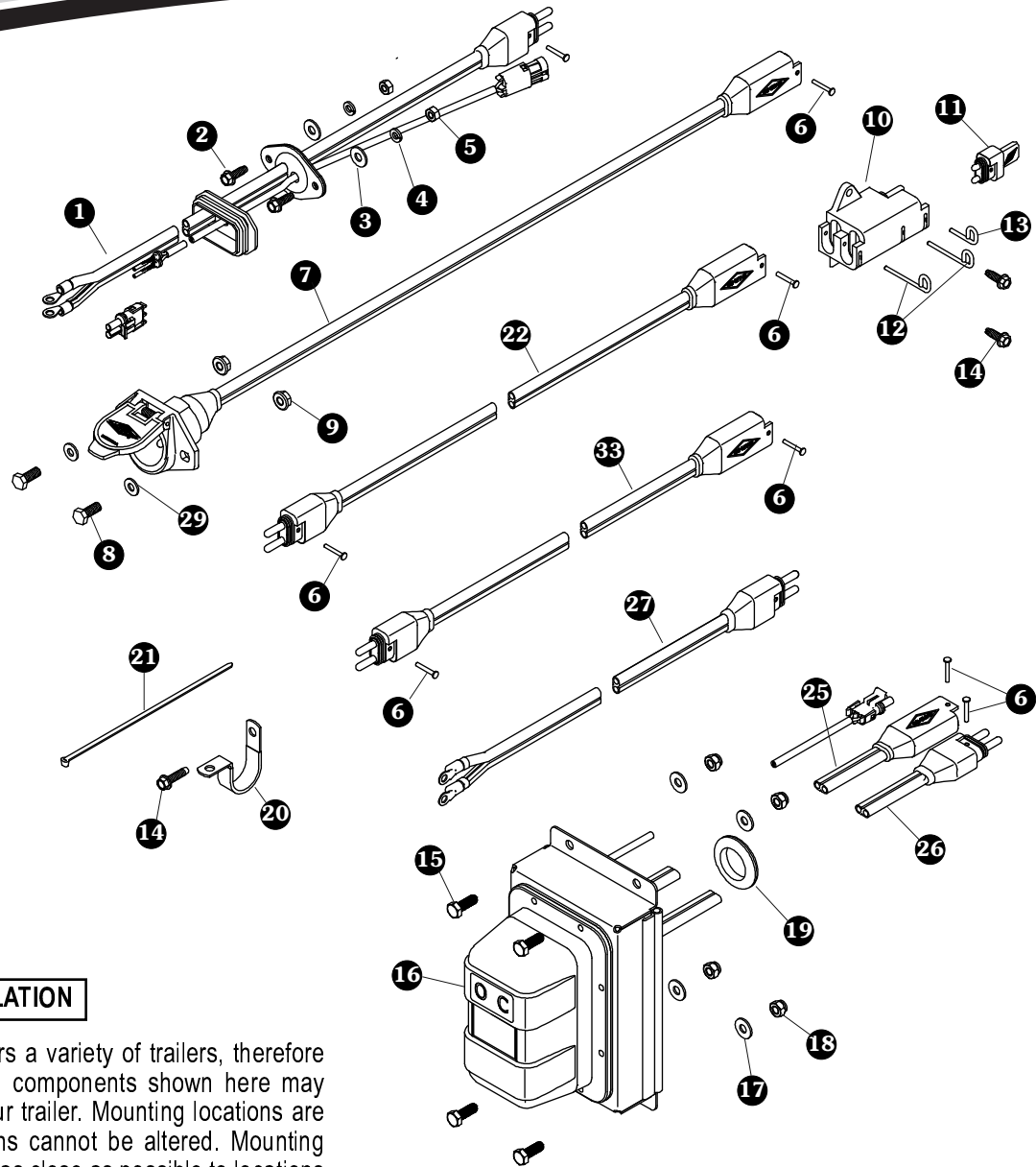


Wiring 4500 Series & Three ProTraps

READ BEFORE INSTALLING

PO BOX 713 ■ 2309 SHUR-LOK STREET ■ YANKTON, SD 57078-0713
PHONE 1-800-4-SHUR-LOK (1-800-474-8756) ■ FAX 605-665-0501
www.shurco.com

SHOP ONLINE: www.shopshurco.com

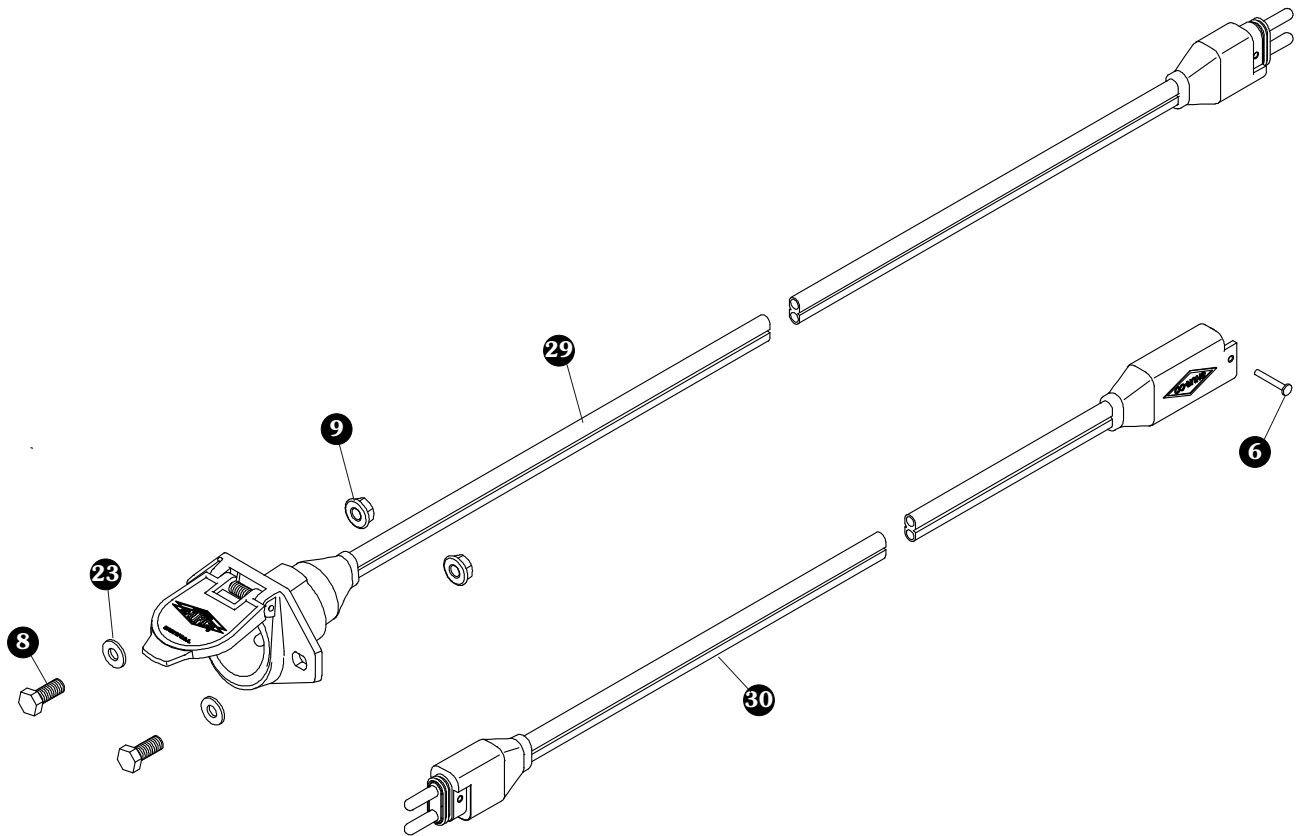


SMARTWIRE™ INSTALLATION

This instruction sheet covers a variety of trailers, therefore locations for SMARTwire™ components shown here may need to vary slightly on your trailer. Mounting locations are critical because wire lengths cannot be altered. Mounting SMARTwire™ components as close as possible to locations shown will not only ensure quick and easy installation but also facilitate SMARTwire™ upgrades.

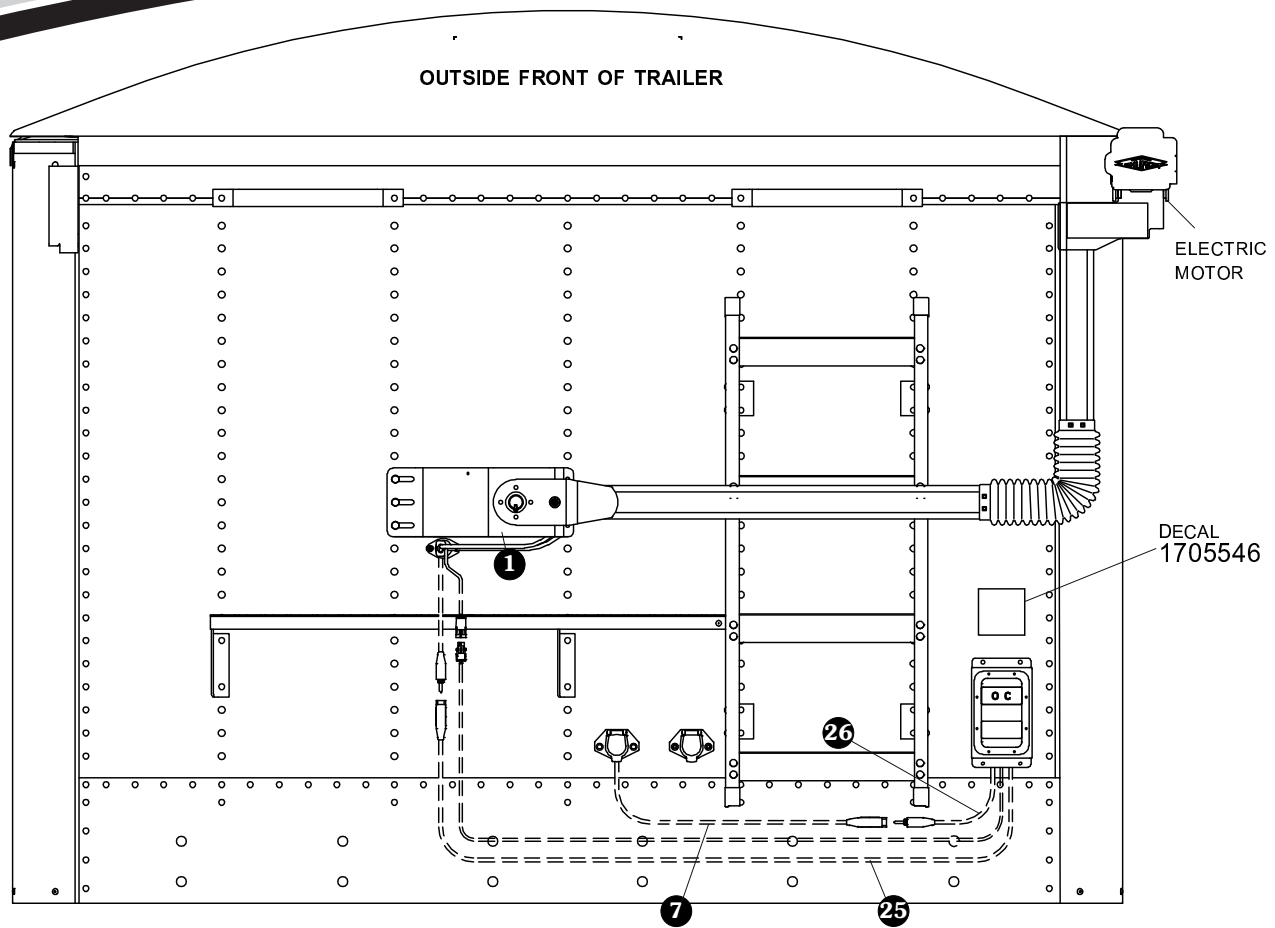
Item	Part #	Description
1.		SMARTwire™ - 6 Ga. - Plug - 9' 9" w/Encoder Wire
2.	1700403	Self-Tapping Screw - 1/4" x 3/4"
3.	1700427	Flat Washer - 1/4"
4.	1700436	Lock Washer - 1/4"
5.	1700408	Hex Nut - 1/4"
6.	1704751	Harness Lock Pin - 1/4" x 7/8"
7.	1120670	SMARTwire™ Dual-Conductor Socket
8.	1701045	Cap Screw - 5/16" x 3/4"
9.	1704946	Flanged Top Lock Nut - 5/16"
10.	1704695	Harness Junction Block - Black Rubber
11.	1704717	Wire Harness Rubber Plug - Black
12.	1704696	Harness Lock Pin - Long

Item	Part #	Description
13.	1704711	Harness Lock Pin - Short
14.	1704338	Self-Tapping Screw - 1/4" x 1"
15.	1702926	Cap Screw - 5/16" x 7/8"
16.		Shur-Co® Wireless Receiver - SMARTwire™
17.	1700428	Flat Washer - 5/16"
18.	1700419	Lock Nut - 5/16"
19.	1202938	Rubber Grommet - 1 1/2" Insert
20.	1702108	Wire Clip - 3/4"
21.	1703231	Cable Tie - 8"
22.	1704704	SMARTwire™ - 6 Ga. x 25' - Plug/Socket
25.	1120817	SMARTwire™ - 6 Ga. x 6' 3" - Socket
26.	1704705	SMARTwire™ - 6 Ga. x 2' 4" - Plug
27.	1704716	SMARTwire™ - 6 Ga. x 10' - Plug/Ring Terminals
29.	1700427	Flat Washer - 1/4"
33.	1704827	SMARTwire™ - 6 Ga. x 16' - Plug/Socket



**LEAD TRAILER WIRING PARTS FOR SUPPLYING
POWER TO REAR/PUP TRAILERS**

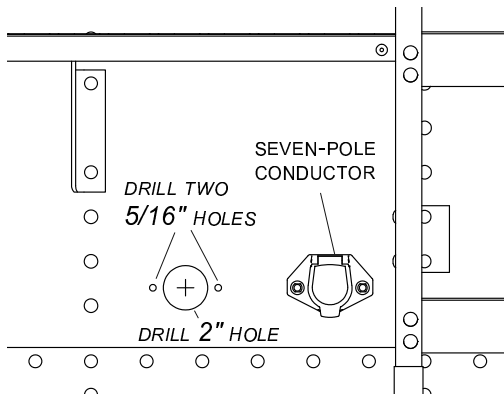
Item	Part #	Description
6.	1704751	Harness Lock Pin - 1/4" x 7/8"
8.	1701045	Cap Screw - 5/16" x 3/4"
9.	1704946	Flanged Top Lock Nut - 5/16"
23.	1700427	Flat Washer - 1/4"
29.	1122541	SMARTwire™ - 4 Ga. x 22' - Dual-Conductor Socket
	1122542	SMARTwire™ - 4 Ga. x 32' - Dual-Conductor Socket
	1122543	SMARTwire™ - 4 Ga. x 40' - Dual-Conductor Socket
30.	1704888	SMARTwire™ - 4 Ga. x 25' - Plug/Socket



NOTE: Wire lengths are predetermined. Before installing SMARTwire™ components, review and confirm wire routing so wires reach components with ample room for connection.

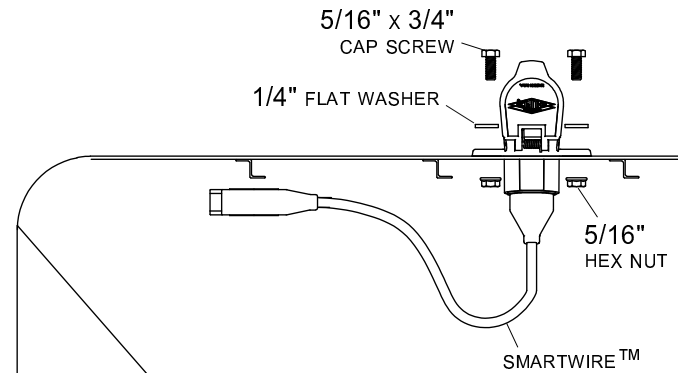
DUAL-POLE CONDUCTOR SOCKET INSTALLATION

STEP 1: Locate dual-pole conductor socket near seven-pole conductor socket as shown. Determine location and drill 2" hole through trailer skin.



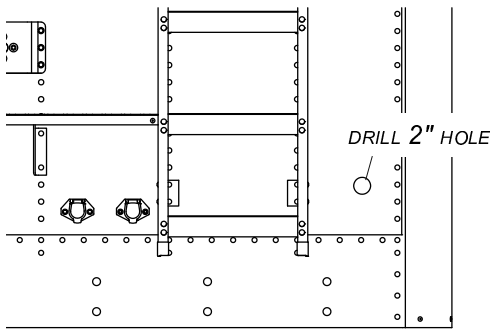
STEP 2: Align socket over 2" hole. Using holes in flanges on socket as guide, mark and drill two 5/16" holes.

STEP 3: Fasten conductor socket to trailer with 5/16" x 3/4" cap screws, flat washers and nuts.

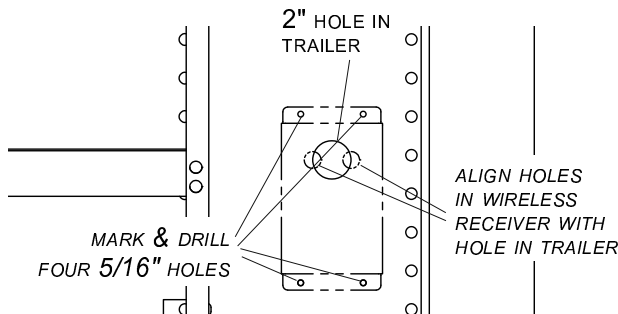


SHUR-CO® WIRELESS RECEIVER INSTALLATION

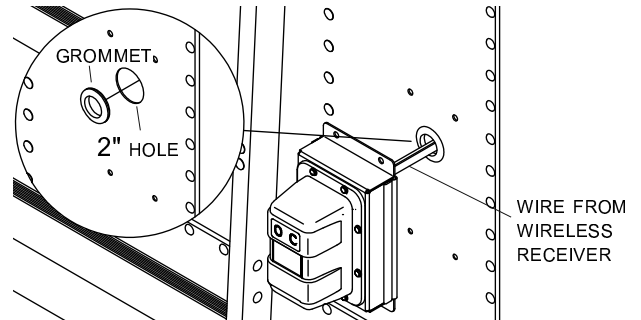
STEP 1: In order to clear travel area of front arm, locate Shur-Co® wireless receiver as low as possible on front of trailer. Determine location and drill 2" hole through trailer skin.



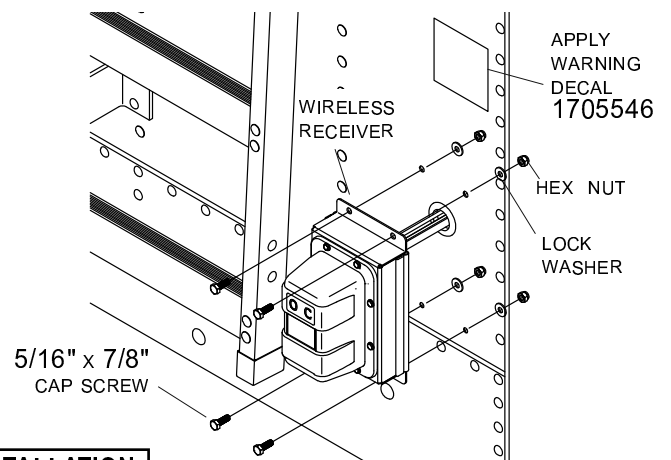
STEP 2: Align holes in wireless receiver over 2" hole in trailer as shown below. Using holes on flanges on receiver as guide, mark and drill four 5/16" holes as shown.



STEP 3: Install grommet into 2" hole. Insert wire from wireless receiver through grommet.

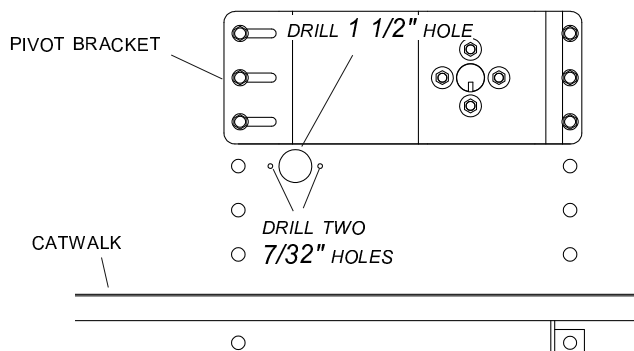


STEP 4: Align holes on wireless receiver with holes on trailer. Fasten receiver to trailer with 5/16" x 7/8" cap screws, lock washers and nuts. Adhere warning decal P/N 1705546 above receiver in location shown.



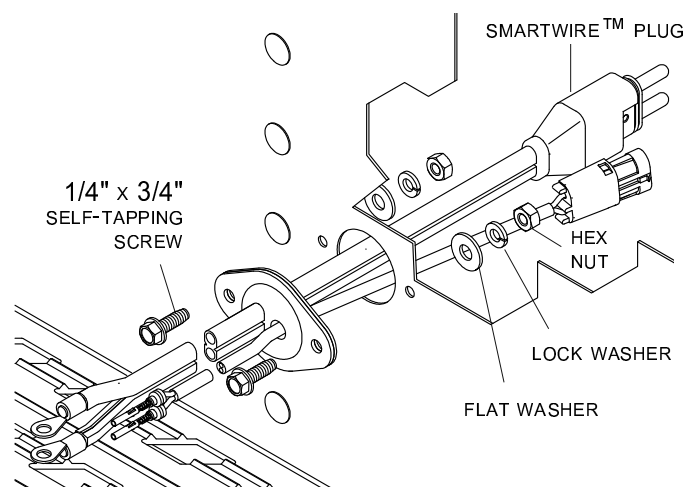
ADAPTER PLUG INSTALLATION

STEP 1: Measure 11" horizontally from center line of trailer and 1" down from lower edge of pivot bracket. Mark and drill 1 1/2" hole through trailer skin.



STEP 2: Align adapter plug with 1 1/2" hole. Using plug as guide, mark and drill two 7/32" holes as shown.

STEP 3: Fasten adapter plug to front of trailer with 1/4" x 3/4" cap screws, lock washers and nuts.



NOTE: Coat each connection with dielectric grease (P/N 1704378) to prevent corrosion.

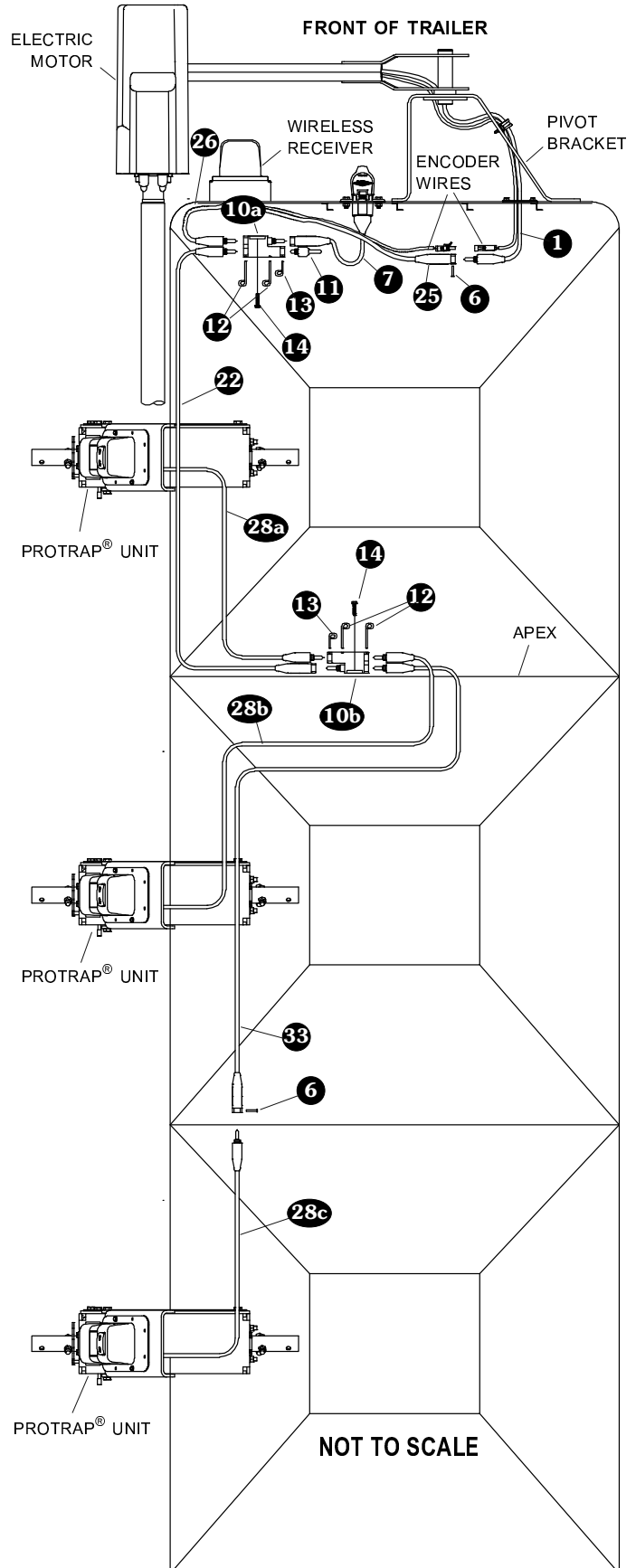
CAUTION
Do not fasten SMARTwire™ components to trailer through hopper walls.

FRONT OF TRAILER

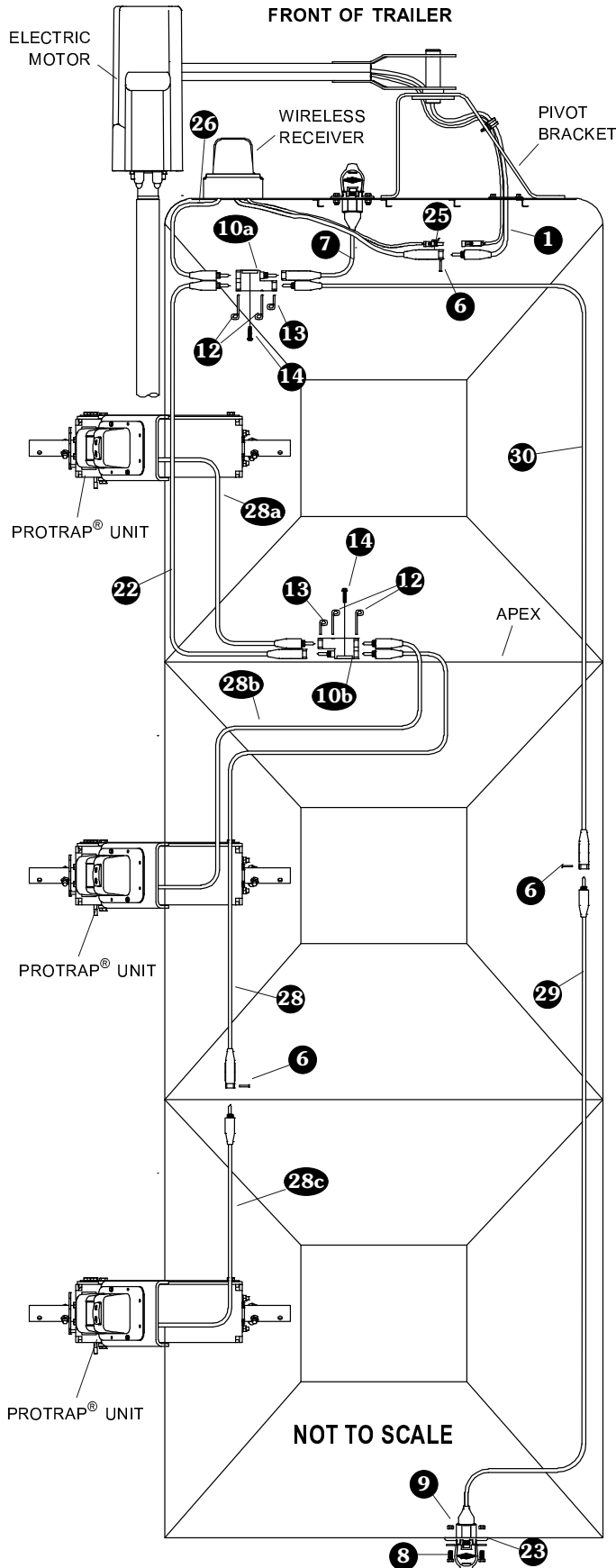
- STEP 1:** Route SMARTwire™ 25 from wireless receiver to adapter plug 1. Connect encoder wire ends. Connect wire to adapter plug and secure with lock pin 6.
- STEP 2:** To determine location of front junction block, route SMARTwires 7 and 26 to location where wires reach. Mount junction block 10a at this location. Using holes in junction block as guide, mark and drill two 7/32" holes.
- STEP 3:** Fasten junction block 10a to trailer with screws 14.
- STEP 4:** Connect SMARTwires 7, 22 and 26 to junction block 10a. Insert plug 11 into remaining socket. Secure connections with lock pins 12 and 13.
- STEP 5:** Route SMARTwire™ 22 from front to apex of trailer.

APEX OF TRAILER

- STEP 6:** To determine location for junction block 10b, route SMARTwires 22, 28a and 28b to location on apex of trailer where wires reach. Position junction block 10b at this location. Using holes in junction block as guide, mark and drill two 7/32" holes.
- STEP 7:** Fasten junction block 10b to trailer with screws 14.
- STEP 8:** Connect SMARTwires 22, 28a, 28b and 33 to junction block 10b at apex of trailer. Secure all connections with lock pins 12 and 13.
- STEP 9:** Route SMARTwire™ 33 toward rear of trailer and connect to SMARTwire™ 28c for rear ProTrap®. Secure with lock pin 6.
- STEP 10:** Secure all wires to trailer with cable clips 20 and screws 14. If needed, use cable ties 21.



Wiring Schematic - 4500 Series & Three ProTraps w/Lead Wiring to Rear/pup Trailer



NOTE: Coat each connection with dielectric grease (P/N 1704378) to prevent corrosion.

CAUTION
Do not fasten SMARTwire™ components to trailer through hopper walls.

FRONT OF TRAILER

STEP 1: Remove lock pin 13 and plug 11 from junction block 10a. Connect SMARTwire™ 30 to junction block 10a and secure with lock pin 13.

STEP 2: Route SMARTwire™ 30 towards rear of trailer.

REAR OF TRAILER

STEP 3: To determine location for conductor socket 29 on rear of trailer, route SMARTwire™ 30 and SMARTwire™ from conductor socket 29 to location near middle of trailer, where wires will reach. Mount conductor socket at this location.

STEP 4: Follow steps 1 to 3 on page 3 to install conductor socket 29.

MIDDLE OF TRAILER

STEP 5: Connect SMARTwires 30 and 29. Secure with lock pin 6.

STEP 6: Secure all wires to trailer with cable clips 20 and screws 19. If needed, use cable ties 21.

MORE QUALITY PRODUCTS FROM SHUR-CO®

- **Genuine Replacement Tarps**
- **Genuine Replacement Parts**

- **Agriculture Products**
 - Value Series Shur-Lok®
 - Super Duty Shur-Lok®
 - Shur-Lok® Junior
 - Premium Belt 'n Ratchet
 - Cable-Lok™
 - Turning Point™ Bow

- **SMARTrailer™ Accessories for Agriculture Products**
 - SMART2™ Remote
 - SMART1 +™ Remote
 - 4500 Series HD Electric
 - AutoTrap™ Hopper Opener
 - ProTrap® Hopper Opener
 - LiteALL™ Work Lights
 - Cable-Lok™ Electric Upgrade
 - Electric Turning Point™ Bow
 - Value Series Electric
 - Solar Power Pack

- **Flatbed Products**
 - ShurTite™ Retractable Tarps
 - Stock Lumber & Steel Tarps
 - Steel Tarps

- **Custom Products**
 - Fitted Truck Covers
 - Flat Utility Tarps
 - Bean Drill Covers
 - Shur-Lok® Tarp Cords

- **Construction Products**
 - Super Duty Shur-Lok®
 - Shur-Trak II™
 - Cover-Pro II®
 - Turning Point™ Bow
 - IronSide™ Side-Dump System
 - Arm-Matic™
 - DuraPull™
 - Econo-Pull™
 - Turbo Tarp2 DONOVAN BRAND
 - 2000 Series DONOVAN BRAND
 - 5000 Series DONOVAN BRAND
 - Hammer DONOVAN BRAND
 - Bullet DONOVAN BRAND
 - Flash DONOVAN BRAND
 - Long Arm DONOVAN BRAND

- **SMARTrailer™ Accessories for Construction Products**
 - 4500 Series HD Electric w/Gate Flex™
 - Shur-Trak II™ Electric Upgrade
 - Cover-Pro II® Electric Upgrade
 - Electric Turning Point™ Bow
 - Solar Power Pack

- **Waste Products DONOVAN BRAND**
 - The Ox™
 - Quick-Flip III
 - Sidewinder
 - Sidewinder 350
 - HyTower SL
 - HyTower DL
 - Double-Flip

TARPING SYSTEMS & ACCESSORIES

