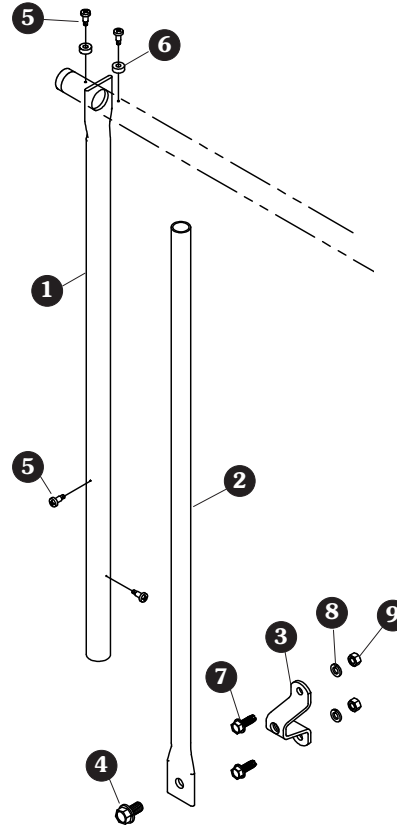
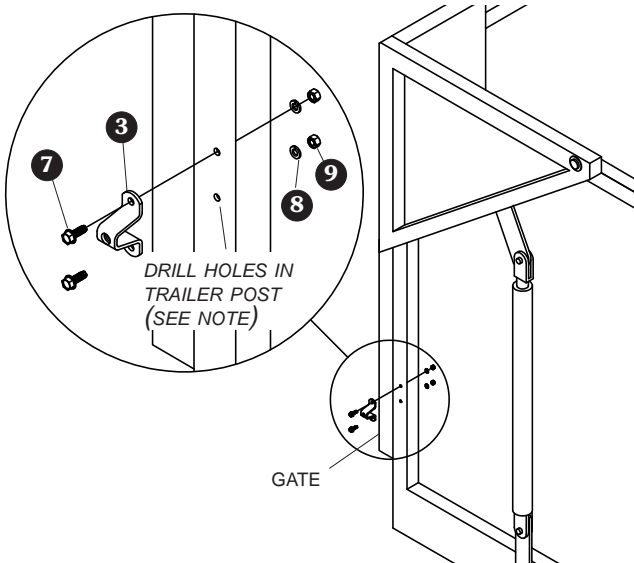


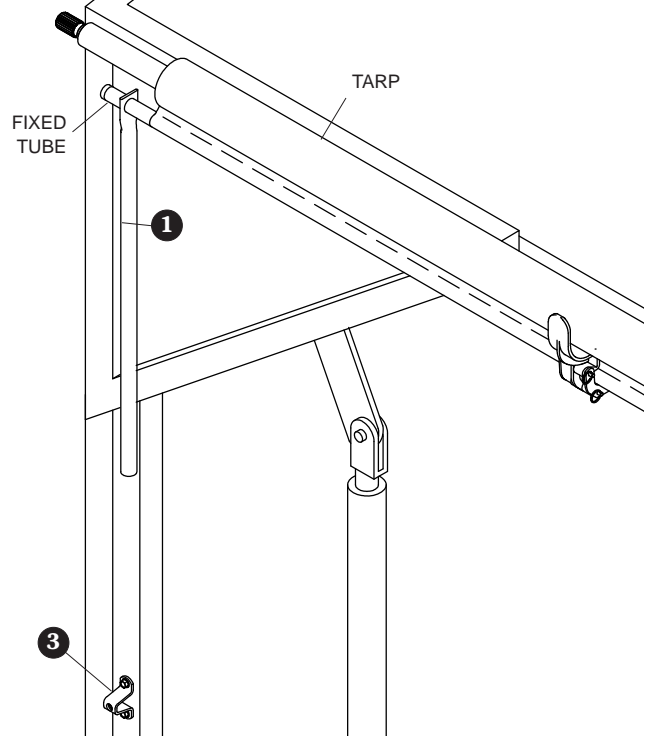
Item	Part #	Description
	1121904	Stabilizer Arm Kit - High-Lift End Gate
1.	1121901	Stabilizer Arm - Upper
2.	1121902	Stabilizer Arm - Lower
3.	1107080	Crank Retainer - 3" Standoff
4.	1702996	Flanged Cap Screw - 1/2" x 1"
5.	1700398	Self-Drilling Screw - 1/4" x 3/4"
6.	1118037	Plastic Washer - Black
7.	1700400	Self-Tapping Screw - 3/8" x 1"
8.	1700434	Lock Washer - 3/8"
9.	1700407	Hex Nut - 3/8"



STEP 1: Locate standoff (3) on trailer post (not on gate). Using holes in standoff as a guide, mark and drill holes in trailer and fasten with screws (7), lock washers (8) and nuts (9).

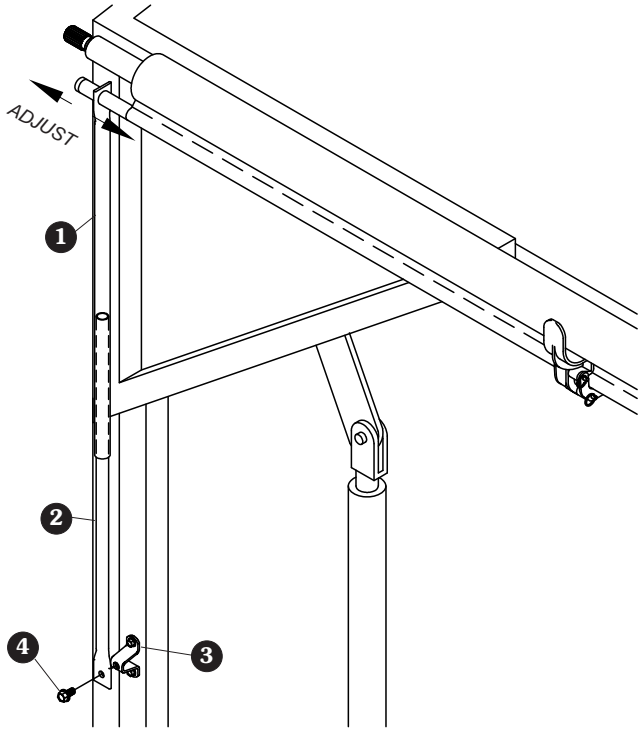


STEP 2: Roll tarp opened and slide upper stabilizer arm (1) over fixed tube.

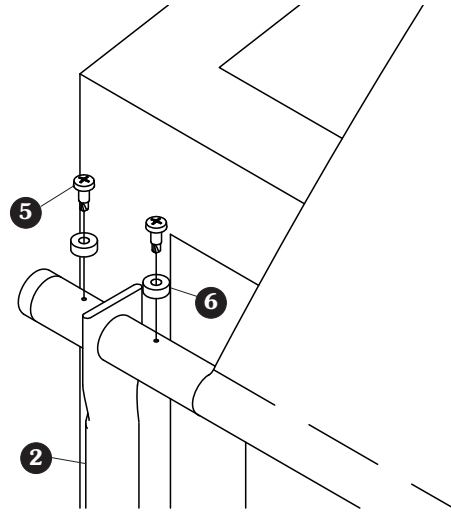


NOTE: Use lock washers and nuts on the interior side, if possible, and drill 13/32" holes. If interior side of trailer is not accessible, self-tapping screws used without washers and nuts require a minimum wall thickness of 3/16". Drill 5/16" holes.

STEP 3: Slide lower arm ② into upper arm ①, then fasten lower arm to standoff with screw ④. Adjust stabilizer arm along fixed tube so arm is vertical.



STEP 4: Fasten self-drilling screws ⑤ and plastic washers ⑥ into fixed tube on both sides of stabilizer arm to secure arm.



STEP 5: Fasten upper arm to lower arm with two self-drilling screws ⑤.

