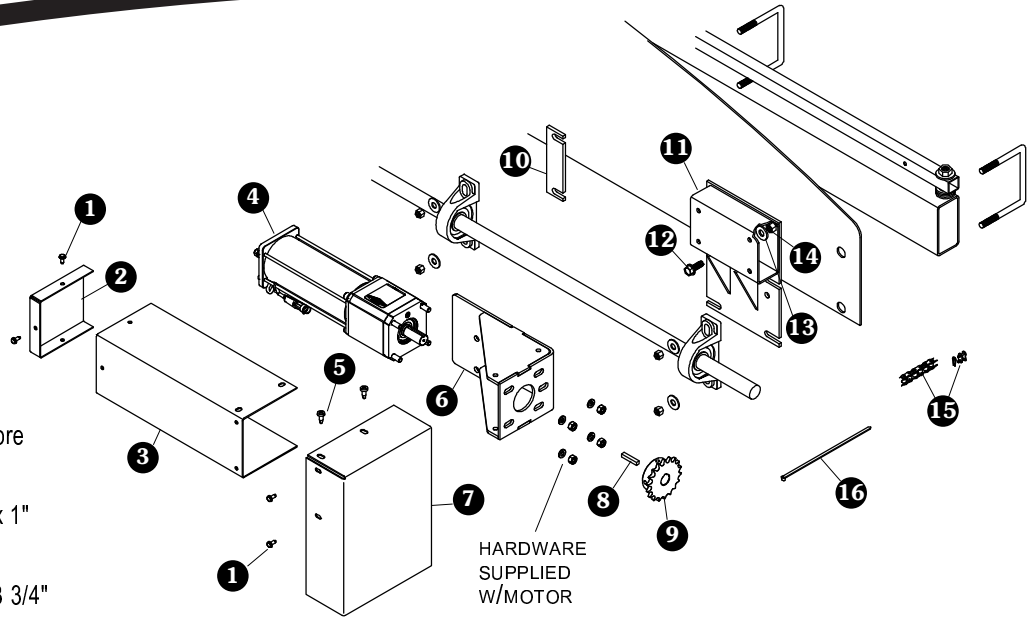


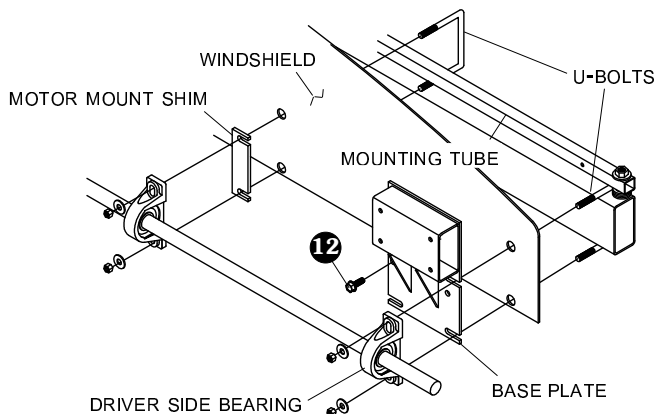
Item	Part #	Description
1.	1704308	Flanged Cap Screw - #10 x 1/2"
2.	1122565	Motor Cover Cap - HD
3.	1122564	Motor Cover - HD
4.	1122442	Replacement Motor - HD
5.	1700398	Self-Drilling Screw - 1/4" x 3/4"
6.	1122559	Motor Mount Bracket - HD
7.	1122566	Sprocket Cover - HD
8.	1120762	Square Key
9.	1122377	Sprocket - T18-40 - 3/4" Bore
10.	1109444	Motor Mount Shim
11.	1109449	Motor Mount Base Plate
12.	1700400	Self-Tapping Screw - 3/8" x 1"
13.	1700429	Flat Washer - 3/8"
14.	1700407	Hex Nut - 3/4"
15.	1122562	Roller Chain Assembly - 23 3/4"
16.	1703231	Cable Tie - 8"



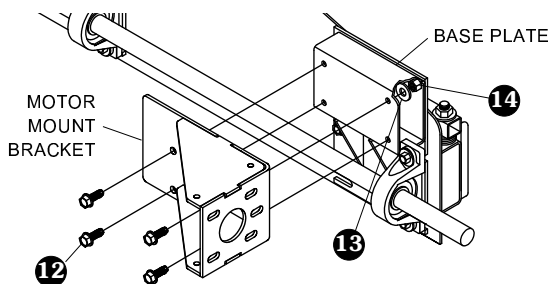
STEP 1: Loosen driver side bearing on front drive assembly. Slide base plate behind bearing. Square up mount and retighten bearing.

STEP 2: Install screw 12 through hole in base plate.

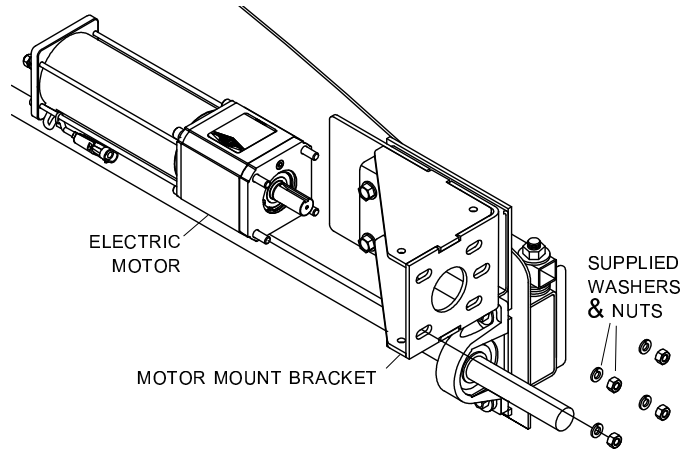
STEP 3: Install and secure motor mount shims behind center and passenger side bearings.



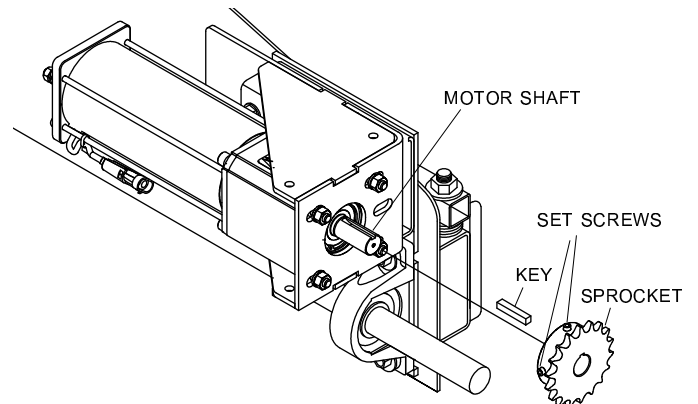
STEP 4: Fasten motor mount bracket to base plate with screws 12, washers 13 and nuts 14. Finger tighten.



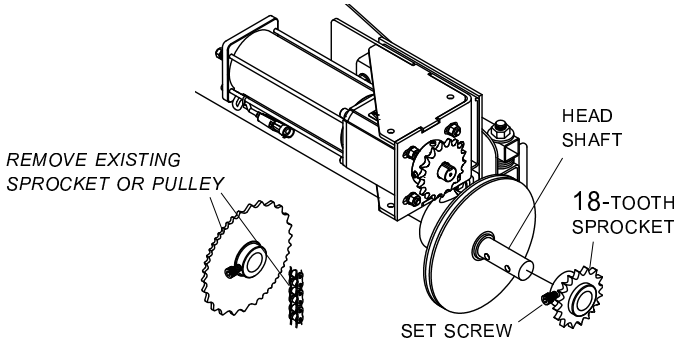
STEP 5: Fasten electric motor to motor mount bracket with supplied washers and nuts.



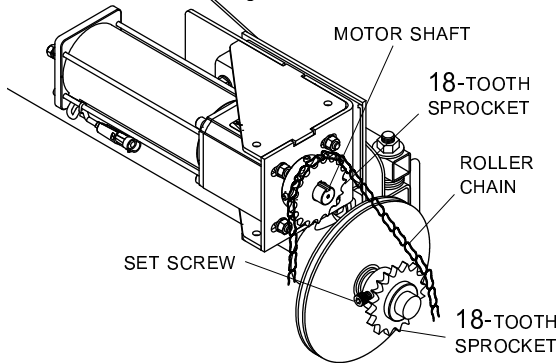
STEP 6: Slide 18-tooth sprocket over motor shaft, inserting key in keyway. Do not tighten set screws at this time.



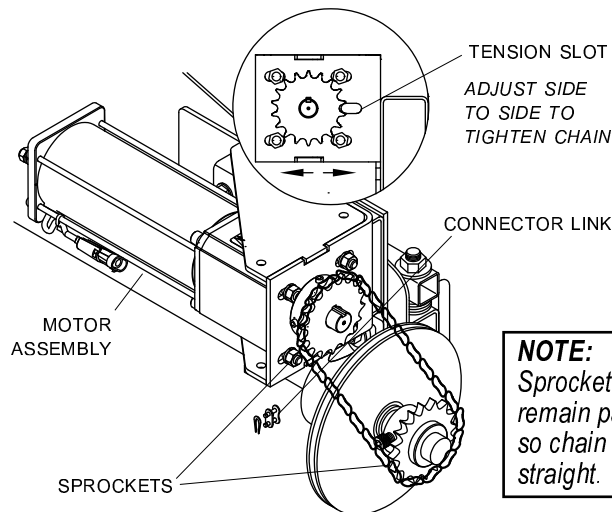
STEP 7: Remove existing sprocket or pulley (used in manual operation) from end of head shaft. Replace with 18-tooth sprocket. Tighten set screws on sprocket.



STEP 8: Lay roller chain across top of both sprockets. Align sprocket on motor shaft with sprocket on head shaft so chain runs parallel to face of motor bracket. Tighten set screws on sprocket against motor shaft.

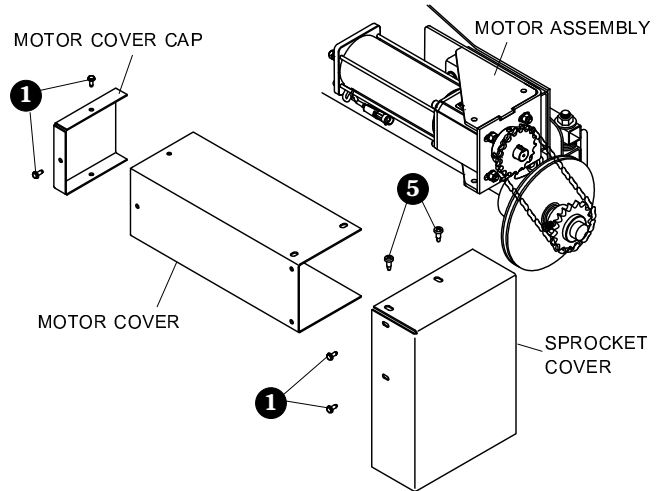


STEP 9: Wrap chain around sprockets and connect ends with connector link. Slide motor side to side using tension slot to create tension on chain.



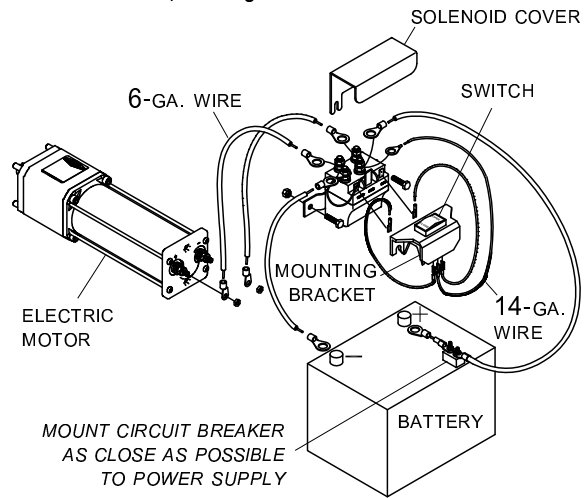
NOTE: Sprockets must remain parallel so chain will run straight.

STEP 10: Install motor cover, motor cover cap and sprocket cover over motor assembly. Fasten with screws ① and ⑤.



ELECTRIC MOTOR WIRING

STEP 11: Run 6-ga. wire from motor to solenoid and from power supply to solenoid as shown in diagram. Run 14-ga. wires from solenoid to switch. Locate switch in a convenient operating location.



NOTE: System can only be grounded through switch. Running wires to motor will reverse continuity.

