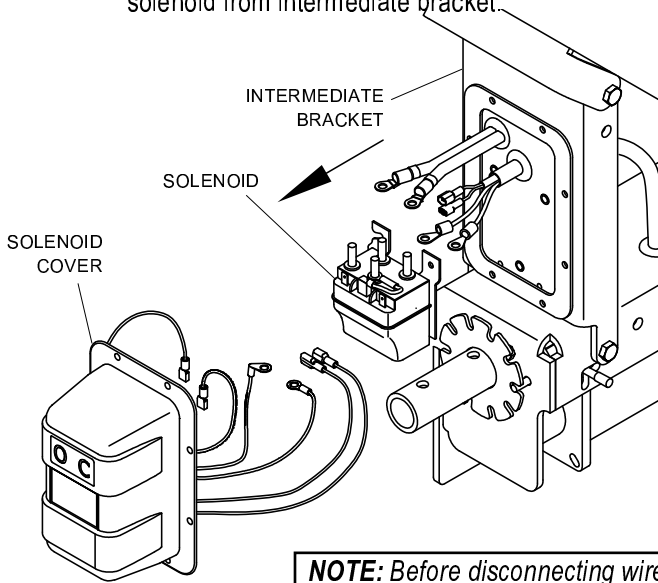


**INTERMEDIATE BRACKET**

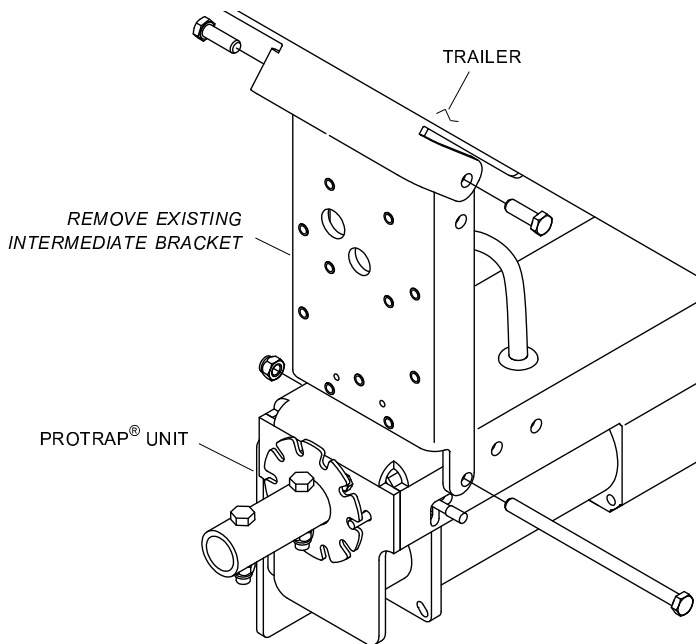
**STEP 1:** Disconnect trailer from power source.

**STEP 2:** Remove solenoid cover from ProTrap® intermediate bracket. Disconnect wires from solenoid and remove solenoid from intermediate bracket.

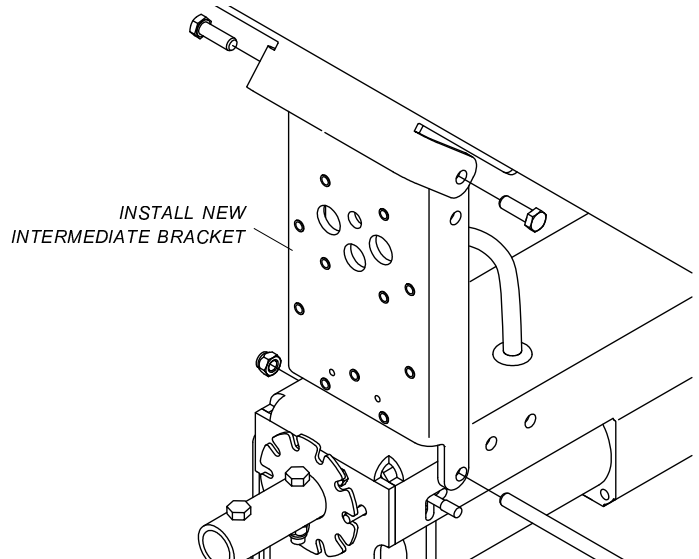


**NOTE:** Before disconnecting wires, take note of existing wire locations.

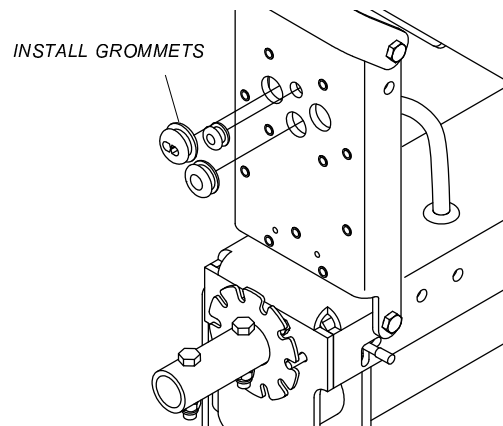
**STEP 3:** Remove wires and grommets from existing intermediate bracket. Unfasten and remove intermediate bracket from Protrap® unit and trailer.



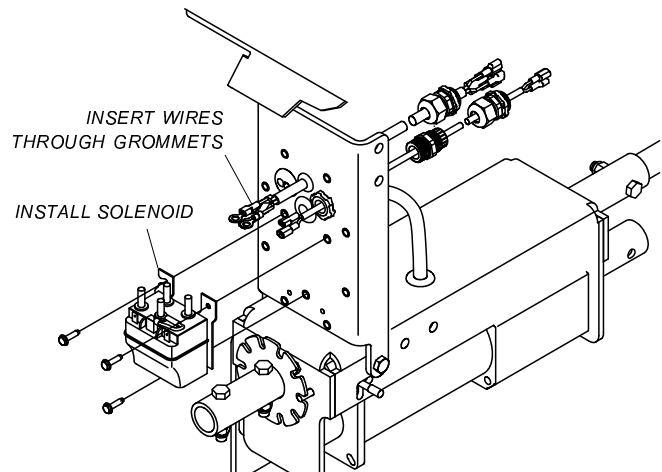
**STEP 4:** Replace existing intermediate bracket with new external control intermediate bracket.



**STEP 5:** Install rubber grommets into intermediate bracket.

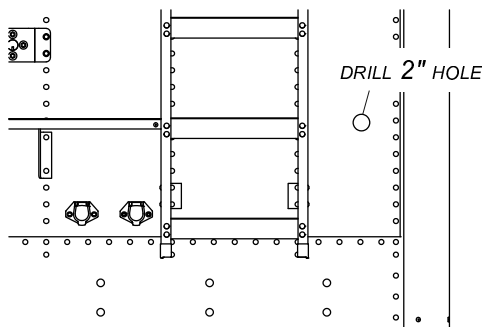


**STEP 6:** Insert wires through grommets. Install solenoid on bracket.

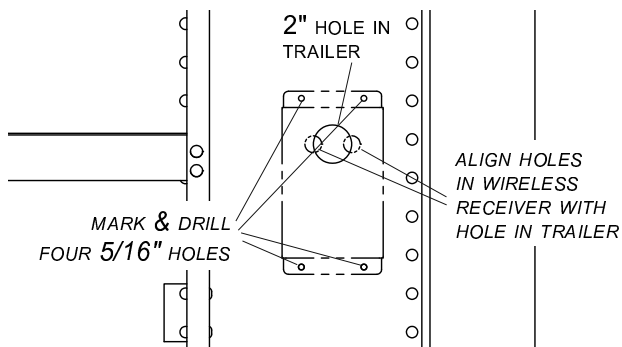


**SHUR-CO® WIRELESS RECEIVER INSTALLATION**

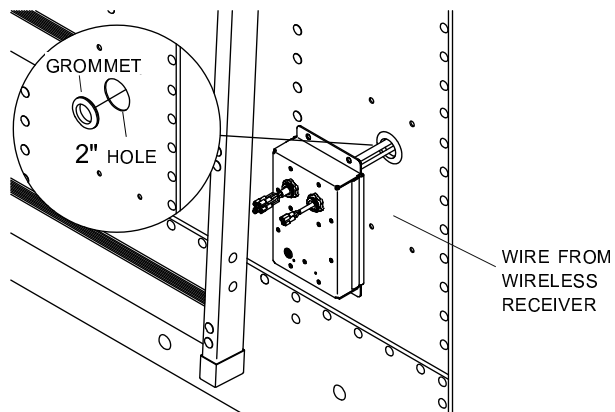
**STEP 7:** Locate Shur-Co® wireless receiver on front of trailer. Determine location and drill 2" hole through trailer skin.



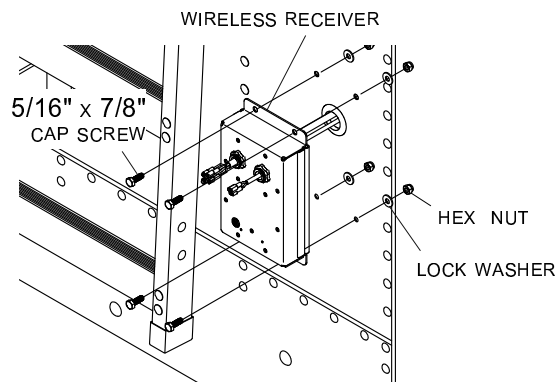
**STEP 8:** Align holes in wireless receiver over 2" hole in trailer as shown below. Using holes on flanges on receiver as a guide, mark and drill four 5/16" holes as shown.



**STEP 9:** Install grommet into 2" hole. Insert wire from wireless receiver through grommet.

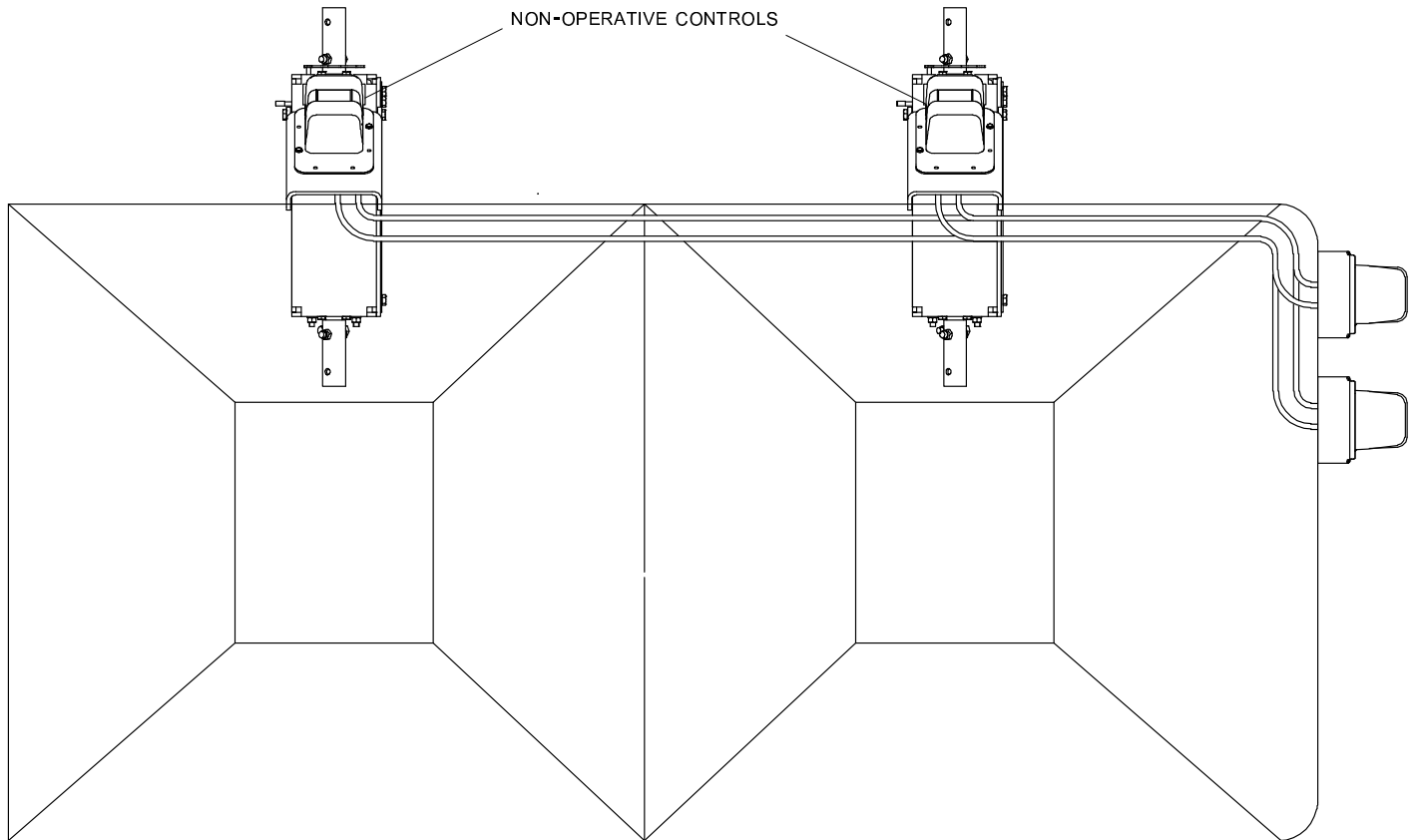


**STEP 10:** Align holes on wireless receiver with holes on trailer. Fasten receiver to trailer with 5/16" x 7/8" cap screws, lock washers and nuts.

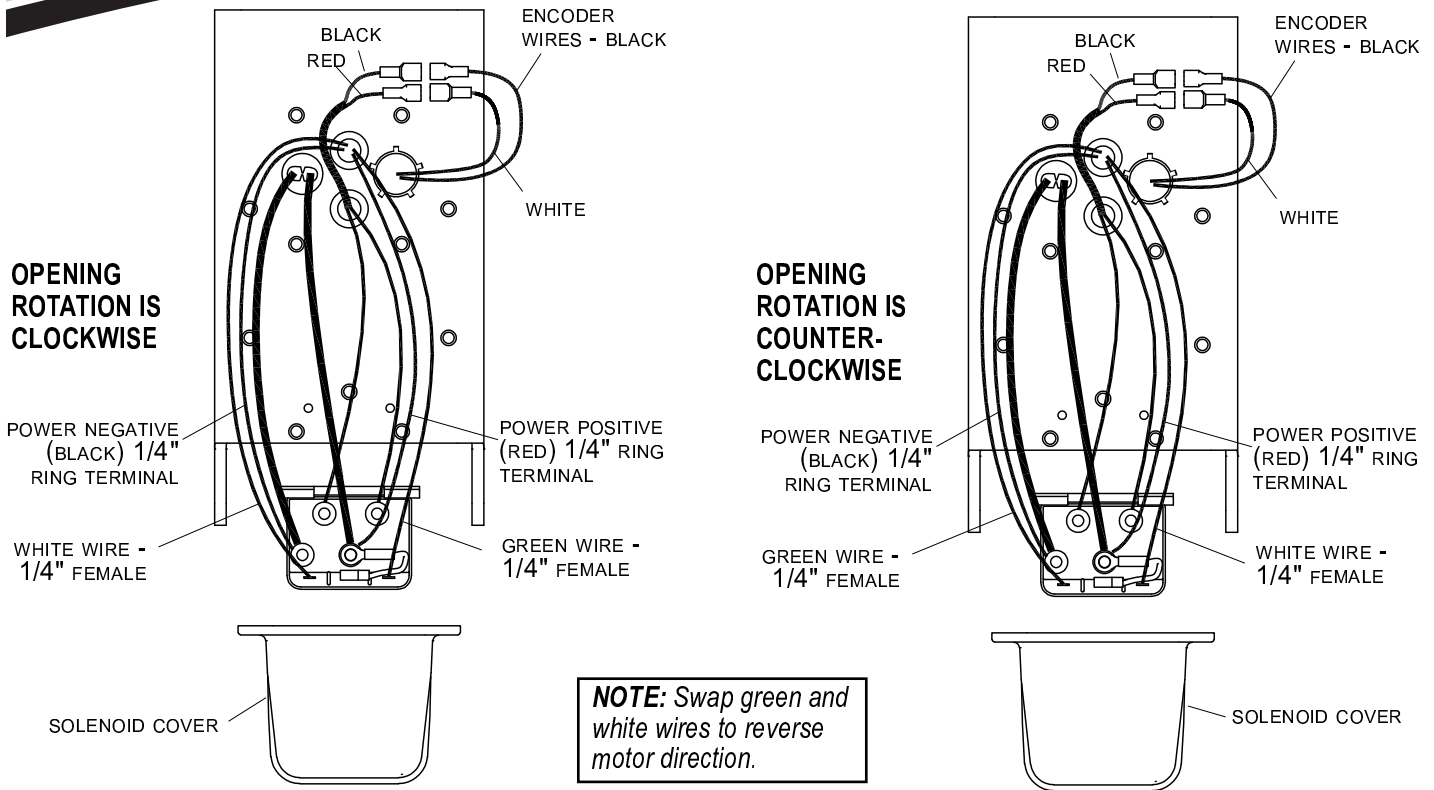


**ELECTRIC WIRING**

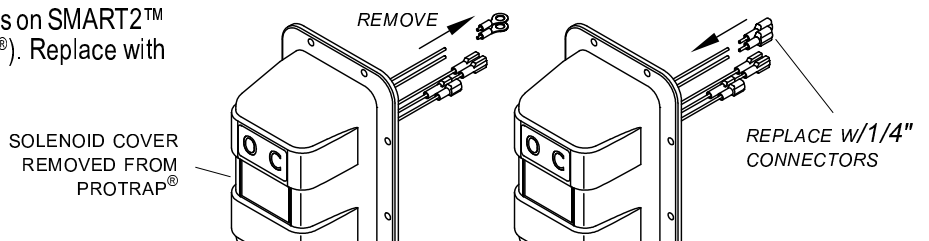
**STEP 11.** Route wires from wireless receiver to ProTrap®, locating wires inside trailer. Secure wires to trailer with wire clips and cable ties. Cut wire to length.



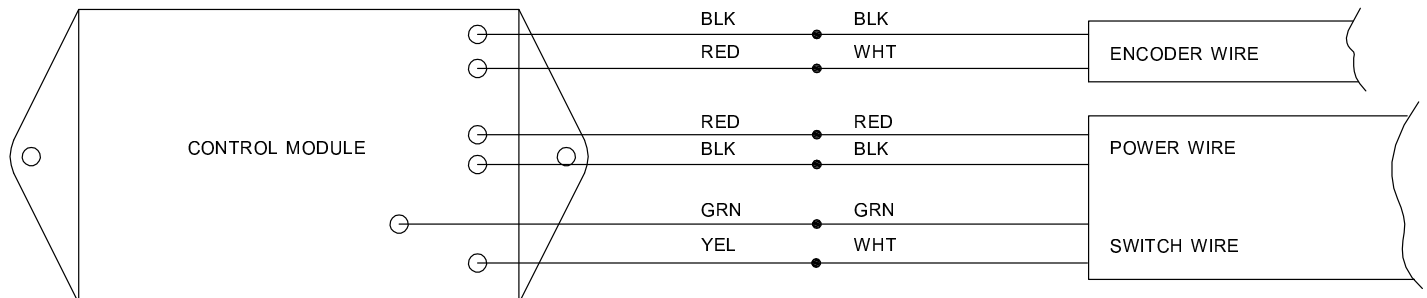
**STEP 12:** Connect wires from ProTrap® bracket to solenoid as shown below.



**STEP 13.** Remove existing ring terminals from wires on SMART2™ solenoid cover (removed from ProTrap®). Replace with 18- to 22-ga. x 1/4" male connectors.



**STEP 14.** On front of trailer, connect wires from Smart2™ solenoid cover to wireless receiver.



**STEP 15.** Connect power to trailer and verify system is operating correctly. If ProTraps are running system backwards, verify wiring is correct (see step 12).

**STEP 16.** Fasten solenoid covers onto ProTrap® intermediate brackets and wireless receiver.

**STEP 17.** Repeat steps as needed for each ProTrap®.