



TARPING SYSTEMS & ACCESSORIES

P/N 1122799 Rev. F

# OWNER'S MANUAL



## SMART2™ SMARTwire™ Hopper Door Opener

*READ BEFORE OPERATING*

PO BOX 713 ■ 2309 SHUR-LOK STREET ■ YANKTON, SD 57078-0713  
PHONE 1-800-4-SHUR-LOK (1-800-474-8756) ■ FAX 605-665-0501  
[www.shurco.com](http://www.shurco.com)

SHOP ONLINE: [www.shopshurco.com](http://www.shopshurco.com)

**SHIPPING.** Orders are shipped F.O.B. from the Shur-Co®, LLC sites listed below. No full freight is allowed or prepaid shipment accepted unless quoted and approved in writing prior to acceptance of the order. All shipments are made by the most reasonable means in accordance with size and weight of order, unless specified routing instructions are furnished by the customer. Shipments are made daily via U.P.S. and common carrier. Claims for shortages must be made within 10 days. All claims for damages or loss in transit must be made with the carrier. No collect calls will be accepted. To ensure delivery of orders, we need your full street address and phone number. When you receive your shipment, examine it carefully. Be sure all cartons listed on the delivery sheet are accounted for. Large items may be packaged separately. If a carton is damaged, open it and inspect the contents before signing for delivery. If merchandise is damaged, describe damage on the delivery receipt. Failure on your part to document damaged or missing merchandise on the delivery receipt releases the carrier of all liability; repair or replacement will be the customer's responsibility.

**WARRANTY.** We warrant all new products are free of defects in materials and workmanship.\* This warranty is effective if products are properly installed and used for the purpose for which they were intended and applies to the original buyer only. Except as set forth above or in any product-specific warranty documentation, we make no other warranties, express or implied, including but not limited to warranties of merchantability of fitness for a particular use.

Returns of a product for warranty must be accompanied by a Return Merchandise Authorization number (RMA#), obtained by calling Customer Service at 866-748-7435, and sent, with freight paid by us, to Shur-Co®, LLC, 2309 Shur-Lok St., PO Box 713, Yankton, SD 57078. All products returned without an RMA# will be refused. When we issue the RMA#, we will also issue a call tag to have UPS (or other freight company) pick up the product. C.O.D. returns not accepted. We will pay no storage fees for a warranty product return prior to pick by us or the freight company. If a warranty product return is scheduled to be picked up by us, we will pick up the product at our earliest convenience.

If a product returned is found, in our judgement, to be defective in material or workmanship, our obligation under this warranty is limited to the repair or replacement of the product, which will be made by us. Repair or replacement will be at our discretion, with replacements being made using current products performing in the equivalent function. Labor charges, other than those incurred at our factory, including, but not limited to, any labor to install a repaired or replacement product, are not covered under this warranty. All expenses associated with delivering defective products to our factory and delivering repaired or replacement products from our factory to the owner will be paid by us.

If the product returned is found, in our judgement, to be non-warrantable, the owner will be contacted to authorize repair work, purchase of a replacement product or return of the product, all of which will be at the owner's expense. Payment authorization must be received by us before any non-warrantable product is repaired, replaced or returned. All expenses associated with delivering the repaired non-warrantable product, a replacement product or the non-warrantable product from our factory to the owner will be paid by the owner.

In no event will we be liable for any damages of any kind to person, product or property, including but not limited to indirect, incidental, special, consequential or punitive damages, or damages for loss of profits or revenue, even if we have been advised of the possibility of such damages. There are no warranties for used products or products that have been repaired, altered, modified or subjected to misuse, negligence or accident. We will not repair or replace products that fail or malfunction due to ordinary wear and tear, except as expressly noted in a product-specific warranty. Use of non-Shur-Co®, LLC parts in conjunction with Shur-Co®, LLC products will void this product warranty.

\*Certain products have specific warranties that differ from this warranty, for example motors and electronics. Product-specific warranty documentation is available for these items. In the event of a conflict between this warranty and a product-specific warranty, the product-specific warranty will govern.

**RETURN POLICY.** All sales final. See WARRANTY above for return details.

**OTHER.** All prices, product listings, sizes, weights and manufacturing details are subject to change without notice. No person is authorized to modify the foregoing conditions of sale whatsoever.

## SHUR-CO®, LLC SERVICE AND DISTRIBUTION CENTERS

### Corporate HQ and Outlet Store

#### SHUR-CO® of SOUTH DAKOTA

2309 Shur-Lok St., PO Box 713  
Yankton, SD 57078-0713  
Ph 800.474.8756 | Fax 605.665.0501

#### ShurTite™ Service Centers

##### SHUR-CO® of CANADA

490 Elgin St., Unit #1  
Brantford, Ontario N3S 7P8  
Ph 800.265.0823 | Fax 519.751.3997

##### SHUR-CO® of SIOUX FALLS

47184 258th St., Suite B  
Sioux Falls, SD 57107  
Ph 844.573.9322 | Fax 605.543.5469

#### SHUR-CO® of COLORADO

10220 Brighton Rd., Unit #1  
Henderson, CO 80640  
Ph 866.355.9173 | Fax 303.289.2298

#### SHUR-CO® of FLORIDA

3353 SE Gran Park Way  
Stuart, FL 34997  
Ph 800.327.8287 | Fax 772.287.0431

#### SHUR-CO® of ILLINOIS

3993 E. Mueller Ave.  
Decatur, IL 62526  
Ph 866.356.0246 | Fax 217.877.8270

#### SHUR-CO® of IOWA

3839 Midway Blvd.  
Ft. Dodge, IA 50501  
Ph 866.356.0245 | Fax 515.576.5578

#### SHUR-CO® of MICHIGAN

5100 Lakeshore Dr.  
Lexington, MI 48450  
Ph 800.327.8287 | Fax 772.287.0431

#### SHUR-CO® of NORTH DAKOTA

1746 4th Ave. NW  
West Fargo, ND 58078  
Ph 877.868.4488 | Fax 701.277.1283

#### SHUR-CO® of OHIO

1100 N. Freedom, St. Rt. 88 & 14  
Ravenna, OH 44266  
Ph 866.356.0242 | Fax 330.297.5599

#### SHUR-CO® of TEXAS

34505 I-10 West. S. Frontage Rd.  
Brookshire, TX 77423  
Ph 866.689.0039 | Fax 281.934.3311

#### SHUR-CO® UK, Ltd.


Unit 41 Rochester Airport Estates  
Laker Rd., Rochester, Kent ME1 3QX  
Ph +44 (0)1795.473499  
Fax +44 (0)871.272.8278

For more information, log on to our website:

[www.shurco.com](http://www.shurco.com)

**MESSAGE TO OWNERS**

Thank you for buying this electronic system from Shur-Co®. We appreciate your confidence in our products. Please read and thoroughly understand this manual before operating this system.

Pay particular attention to important safety and operating instructions, as well as warnings and cautions. The hazard symbol  is used to alert users to potentially hazardous conditions and is followed by caution, warning or danger messages.

Failure to READ AND FOLLOW INSTRUCTIONS could result in failure of your electronic system and/or personal injury. Your trailer requirements may, however, call for minor variations to these instructions.

Please inspect your electronic system periodically. Repair or replace worn or damaged parts to your system.

**QUESTIONS? CALL OUR HELP LINE:**  
**1-866-748-7435**  
MON-FRI 8 AM-5 PM CENTRAL TIME

**SAFETY**

We at Shur-Co® are concerned with your safety and the safety of all those operating this system. Therefore, we have provided safety decals at various locations on your electric system. Keep decals as clean as possible at all times. Replace any decal that has become worn or damaged, painted over or otherwise difficult to read. Replacement decals are available through Shur-Co® dealers.

**SAFETY INSTRUCTIONS**

- 1. Keep body and clothing clear of moving parts.**
- 2. No other use of this system is authorized, except as designed.**

**RUST PREVENTION**



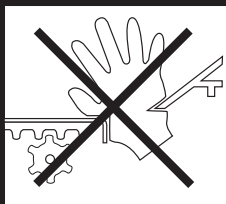

To prevent rust, paint all exposed metal, such as weld seams and/or metal exposed by grinding or cutting, with corrosion-resistant paint.

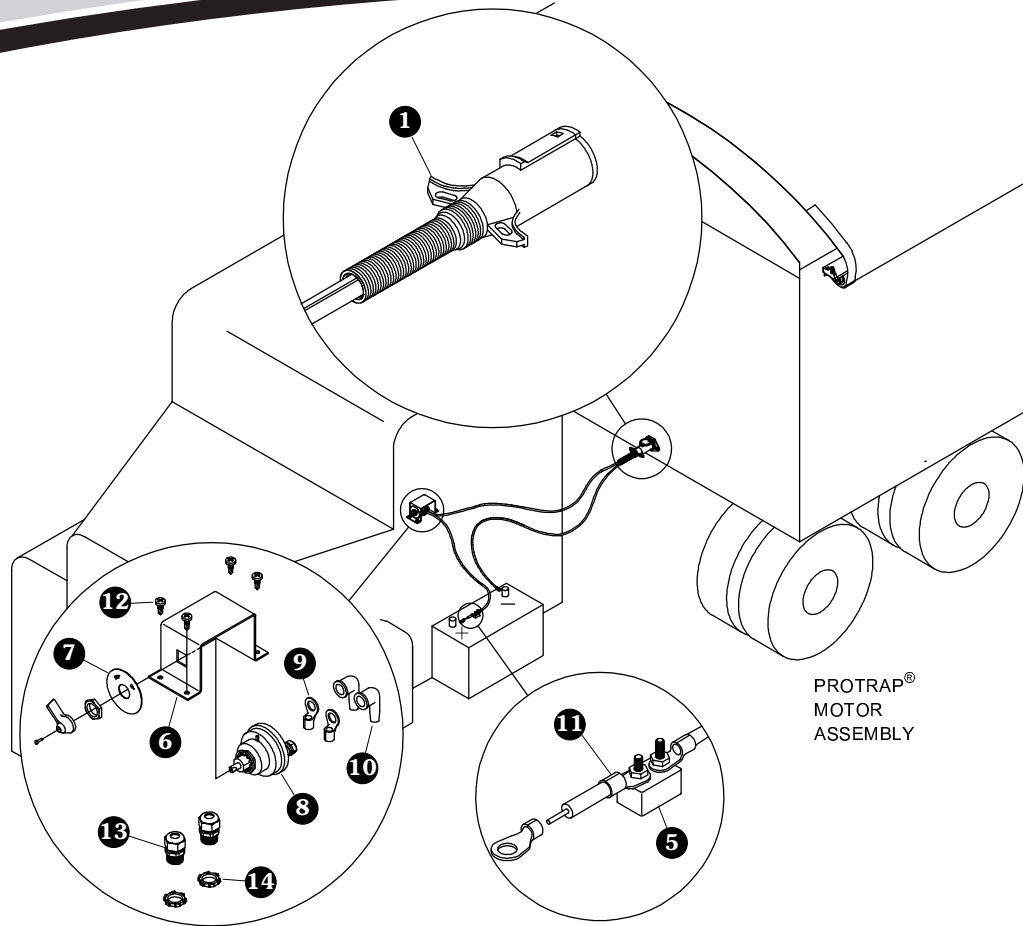
**TABLE OF CONTENTS**

Mounting & Wiring ..... 1  
Operation ..... 3  
Replacement Parts ..... 4-6

**TOOLS REQUIRED**

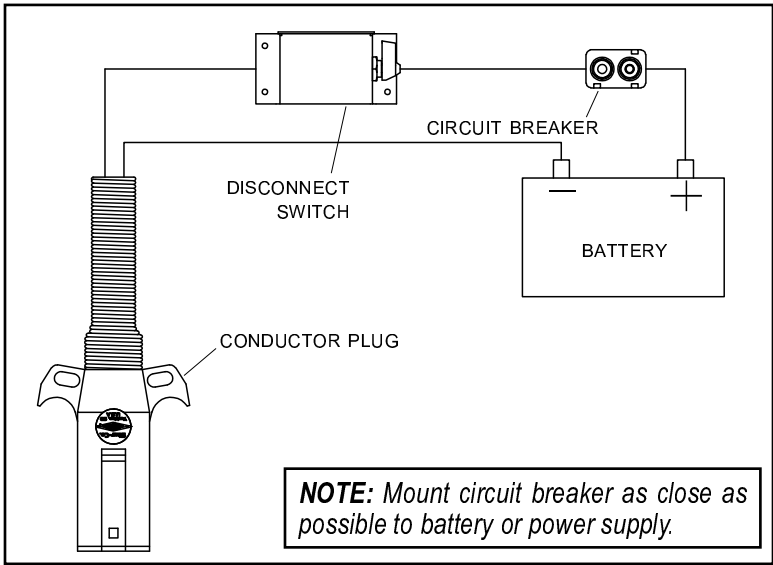
- 1. Pencil or Marker
- 2. Drill
- 3. 7/8" Drill Bit
- 4. Wire Cutters
- 5. Dry Silicone Spray Lubricant
- 6. Wire Terminal Crimper
- 7. 1" Combination Wrench
- 8. #3 Phillips Insert Bit
- 9. #2 Phillips Screw Driver
- 10. Allen Wrench (supplied) - 15/16"

	<b>WARNING</b>		<b>CAUTION</b>
	<ul style="list-style-type: none"><li>• MOVING PARTS HAVE PINCH POINTS AND ENTANGLEMENT AREAS.</li><li>• STAY CLEAR OF DOOR AND MECHANISMS WHEN OPERATING.</li><li>• FAILURE TO COMPLY CAN CAUSE INJURY OR DEATH.</li></ul>		<ul style="list-style-type: none"><li>• JAMMED OR OVERLOADED DOOR CAN CAUSE MOTOR DAMAGE.</li><li>• RELEASE SWITCH IMMEDIATELY IF DOOR STALLS OR REACHES END OF INTENDED TRAVEL.</li><li>• FAILURE TO COMPLY CAN CAUSE MOTOR AND EQUIPMENT DAMAGE.</li></ul>

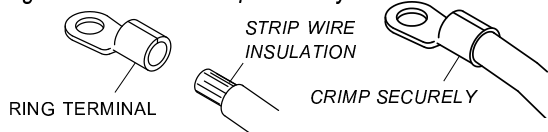


**⚠ NOTICE**  
Do not power any Shur-Co<sup>®</sup> wireless system with battery charger alone, as this will likely cause system abnormalities and/or system malfunction. Instead, use 12-volt truck/automobile battery to provide power to trailer.

Item	Part #	Description
1.	1115385	Heavy-Duty Dual-Conductor Plug
5.	1704354	40-Amp Modified-Reset Circuit Breaker
6.	1118323	Disconnect Switch Mounting Bracket
7.	1704284	Face Plate
8.	1704283	Battery Disconnect Rotary Switch
9.	1705105	Ring Terminal - 4 Ga. x 3/8" Stud
10.	1704330	Rubber Insulating Boot
11.	1705106	Ring Terminal - 4 Ga. x #10 Stud
	1703231	Cable Tie - 8" (not shown)
12.	1700398	Self-Drilling Screw - 1/4" x 3/4"
13.	1704152	Dome Nut - 1/2"
14.	1704187	Lock Nut - 1/2"

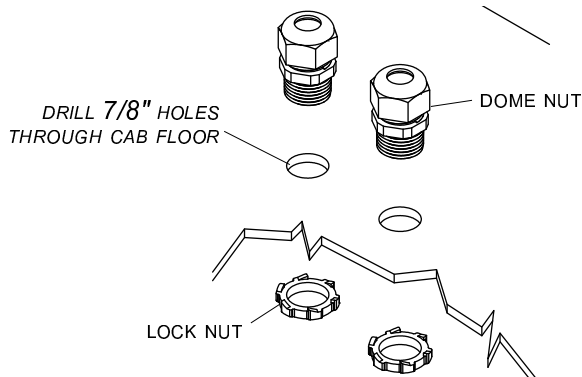


**NOTE:** Cut wires to length and strip only enough wire insulation to install ring terminals. Insert bare wire into ring terminals and crimp securely.

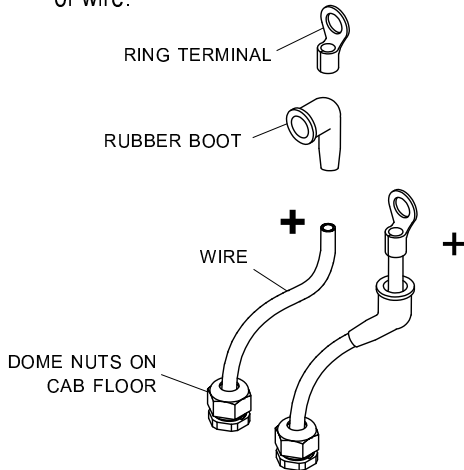


**NOTE:** Mount circuit breaker as close as possible to battery or power supply.

**STEP 1:** Drill two 7/8" holes in cab floor to route wire into cab. Install dome nut strain reliefs into holes.

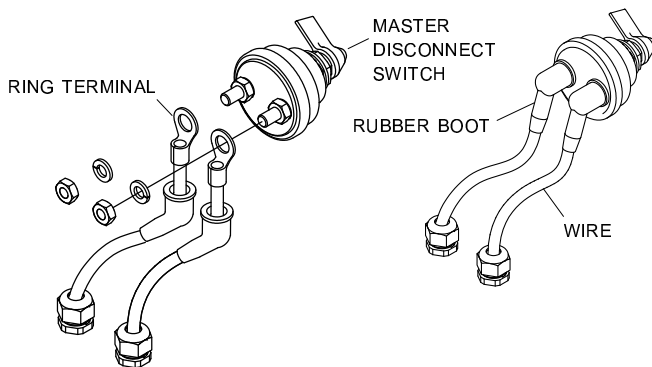


**STEP 2:** Run positive 4-ga. wire from battery through dome nuts on cab floor. Run wire ends through rubber boots, strip wire ends and crimp 3/8" ring terminals to ends of wire.



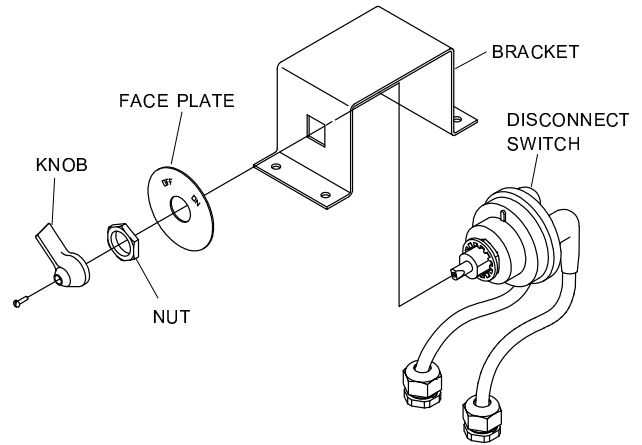
**NOTE:** Use dry silicone spray lubricant on wire and boots to aid installation. This is a very tight fit.

**STEP 3:** Connect wires to disconnect switch. Coat with dielectric grease and install rubber boots over ring terminals.

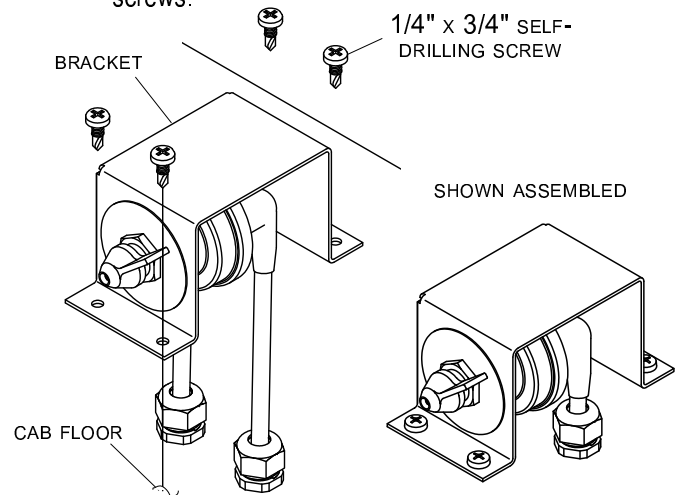


**NOTE:** Use dielectric grease (P/N 1704378) to prevent corrosion on terminals.

**STEP 4:** Remove knob and nut from disconnect switch and assemble face plate and disconnect switch to bracket as shown.

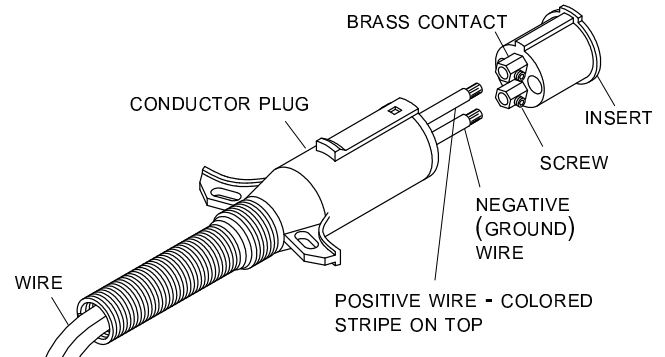


**STEP 5:** Fasten bracket to cab floor with 1/4" x 3/4" self-drilling screws.



**NOTE:** Push buttons will remain active until master disconnect switch is turned off.

**STEP 6:** Unfasten and remove insert from conductor plug. Feed 4-ga. wire through plug and into brass contacts on insert. Tighten screws to secure wires. Replace insert into conductor plug and secure screw.



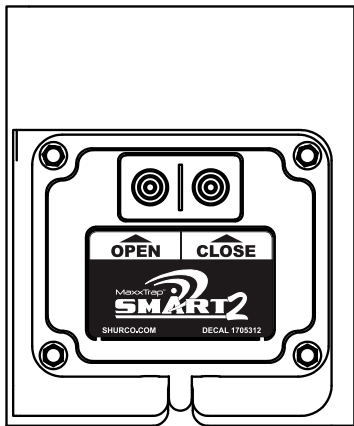


## CAUTION

Check all hardware for complete assembly before operating. Inspect system at this time and adjust as required.

### OPERATION

**Control box operation:** Press and hold CLOSE button to close tarp door. Motor will turn off if trap door hits obstruction. Press and hold OPEN button to open trap door. Motor will turn off if trap door hits obstruction. If travel stops are set, motor will turn off at programmed travel limit on open side.



**Remote operation:** Refer to operating instructions included with your remote.

**NOTE:** To pair a SMART2™ remote to control box:

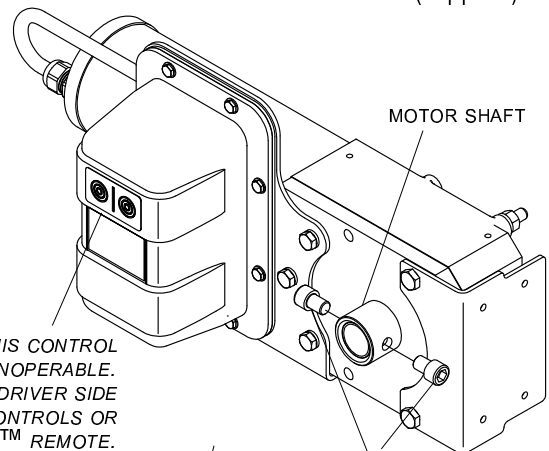
1. Select **ADD DEVICE** from remote's **SETUP MENU**.
2. Put remote down. On control box, hold **OPEN** and **CLOSE** buttons simultaneously for six seconds.
3. After buttons are released, remote will display **DEVICE FOUND**.

**NOTE:** If system turns off unexpectedly, rule out travel stops as a potential cause by deleting travel stops. Press **OPEN** and **CLOSE** together for 35 seconds to delete travel stops.

**NOTE:** Receiver may be pressure washed, but keep nozzle at least 3' from system while spraying.

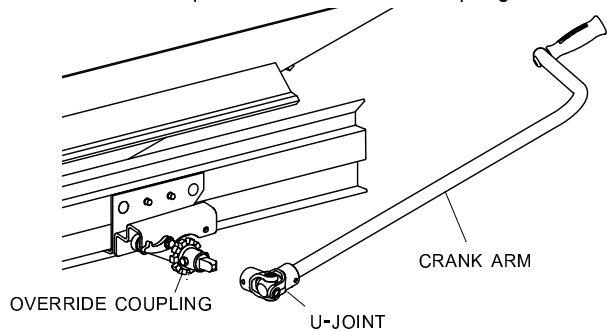
### CONVERT TO MANUAL CRANK

**STEP 1:** Remove protective cap and 3/8" x 1/2" screws from motor shaft with 5/16" Allen wrench (supplied).

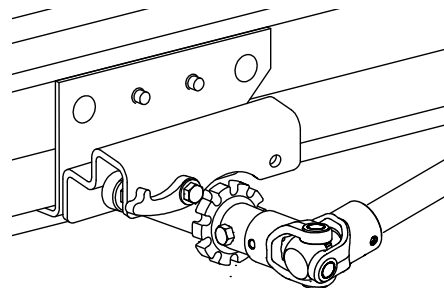


THIS CONTROL IS INOPERABLE. USE DRIVER SIDE CONTROLS OR SMART2™ REMOTE.

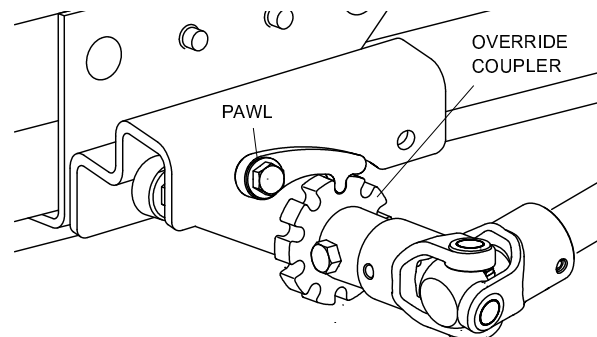
**STEP 2:** Remove crank arm from storage location. Slide U-joint over square end of override coupling.

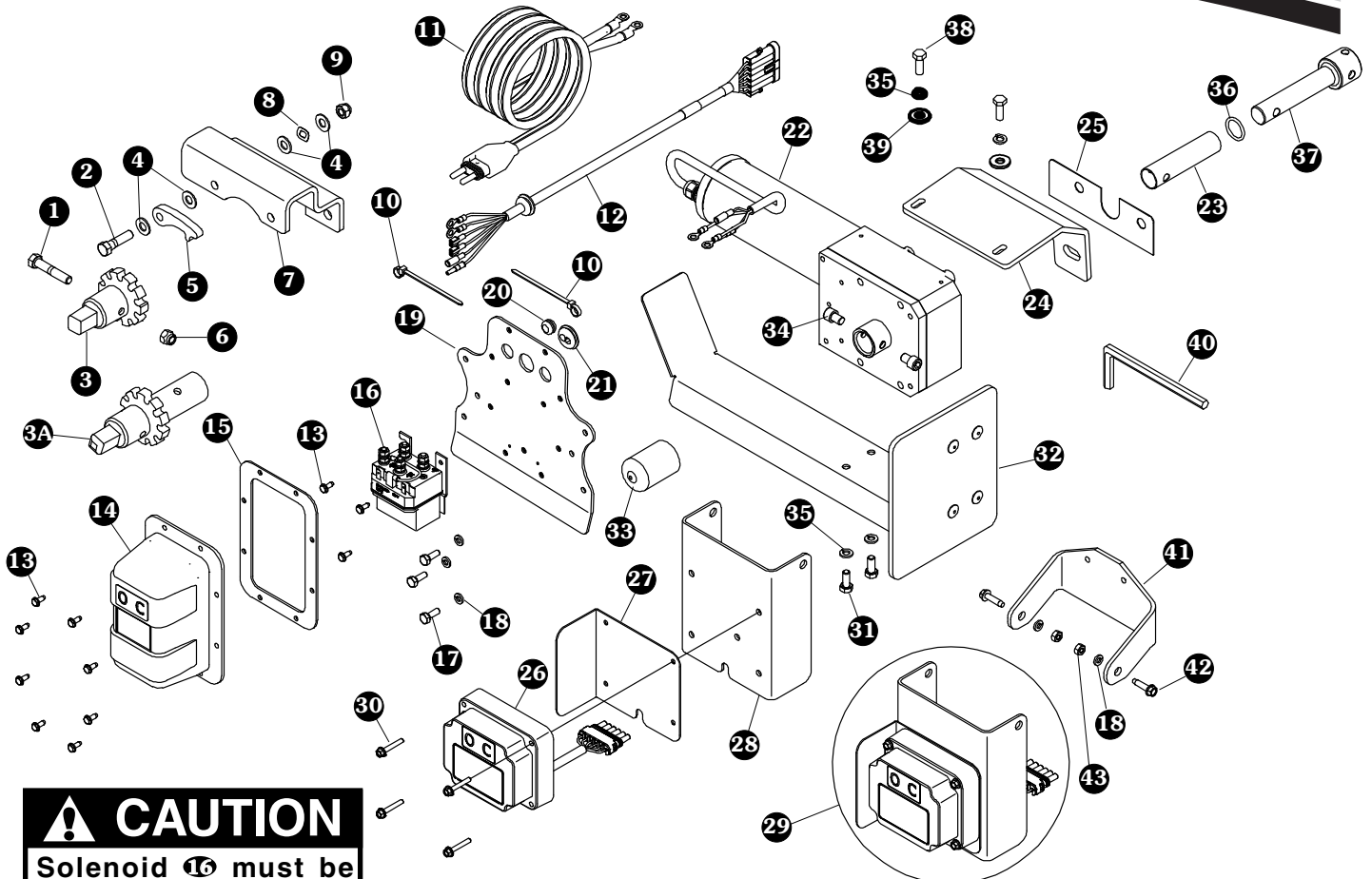


**STEP 3:** Turn crank to open and close cover.



**STEP 4:** Insert pawl into override coupler to lock trap into position.





**CAUTION**  
Solenoid **16** must be used with control box **26**.

**NOTE:** Replace MaxxTrap™ parts only with Genuine Shur-Co® parts to ensure proper system function. If Genuine Shur-Co® parts are not used, warranty could be void.

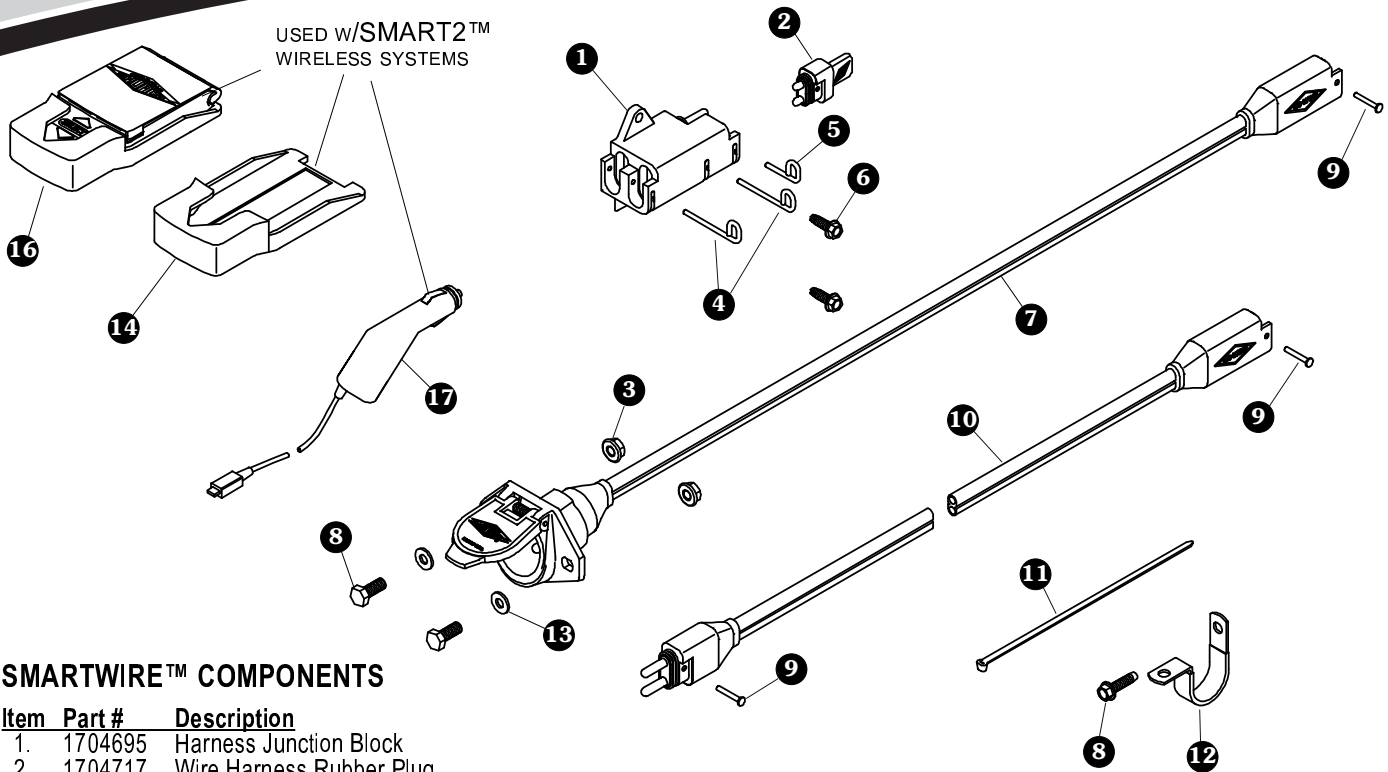
**WIRELESS ASSEMBLIES**

Item	Part #	Description
1.	1705083	Cap Screw - 5/16" x 2" - Grade 8
2.	1701434	Cap Screw - 3/8" x 1 1/2"
*3.	1705078	MaxxTrap™ Override Coupling - 1"
	1705077	MaxxTrap™ Override Adapter - 7/8"
3A	1124587	Manual Override Coupling - RP2
4.	1701176	Flat Washer - 3/8"
5.	1705089	Manual Override Pawl
6.	1704297	Nylon Lock Nut - 5/16"
*7.		Manual Override Bracket
8.	1705087	Wave Washer - 3/8" - SS
9.	1701580	Nylon Lock Nut - 3/8"
10.	1703231	Cable Tie - 8"
11.	1704716	SMARTwire™ - 6 Ga. - M x 1/4" Ring - 10'
12.	1705257	Cable Assembly
13.	1704308	Hex Flange Cap Screw - #10 x 1/2"
14.	1122717	Dummy Solenoid Cover
15.	1704309	Solenoid Cover Gasket
16.	1705408	Motor-Reversing Solenoid - 12V - 3 Pt. - Black Wire

Item	Part #	Description
17.	1703959	Cap Screw - 1/4" x 3/4"
18.	1700436	Lock Washer - 1/4"
19.	1124846	Solenoid Bracket
20.	1705101	Rubber Grommet - 3/8" x 1/2" x 3/32"
21.	1704721	Rubber Grommet - Wire Slot x .875" x .094"
22.	1124591	MaxxTrap™ Motor
23.	1705480	Bushing - .990" OD x .895" ID x 4" - ABS
*24.		Gearbox Mounting Bracket
25.	1124566	Shim Insulator
26.	1122553	SMART2™ MaxxTrap™ Control Box
27.	1122655	Control Box Mudguard
28.	1124321	Receiver Bracket - Mini-Module
29.	1122750	SMART2™ MaxxTrap™ Control Box w/Mounting Bracket
30.	1705912	Hex Flange Cap Screw - #10 x 1 1/2"
31.	1701045	Cap Screw - 5/16" x 3/4"
32.	1124858	Universal Debris Deflector
33.	1700789	Protective Cap - 1.3" ID x 1 5/8"
34.	1705476	Socket Hd. Cap Screw - 3/8" x 1/2"
35.	1700433	Lock Washer - 5/16"
36.	1705477	O-Ring - 7/8" ID x 1 1/8"
37.	1705463	Drive Shaft Coupling
38.	1705142	Cap Screw - 5/16" x 7/8"
39.	1700427	Flat Washer - 1/4" - USS
40.	1705479	Allen Wrench - 5/16"
41.	1123892	Receiver Mounting Bracket
42.	1704338	Self-Tapping Screw - 1/4" x 1"
43.	1700408	Hex Nut - 1/4"

\*Specify make, model and year of trailer



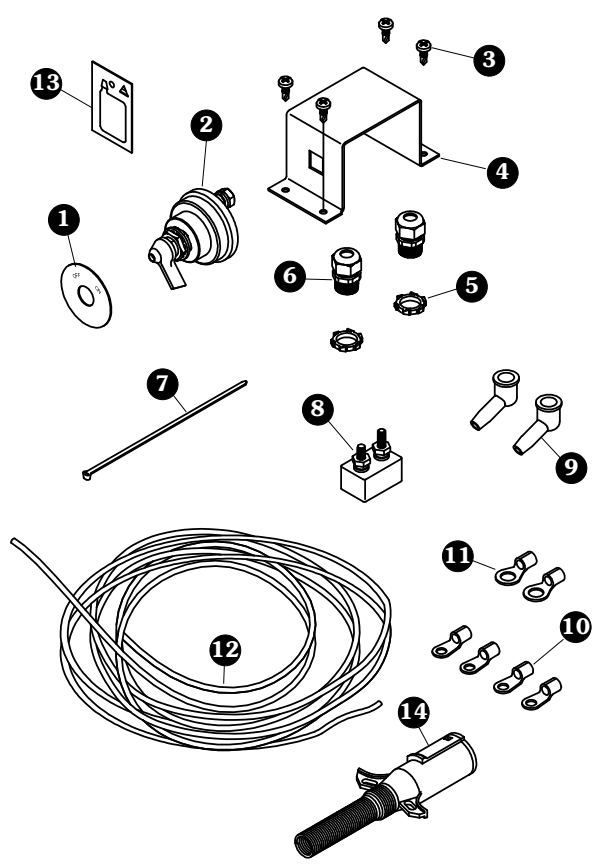


**SMARTWIRE™ COMPONENTS**

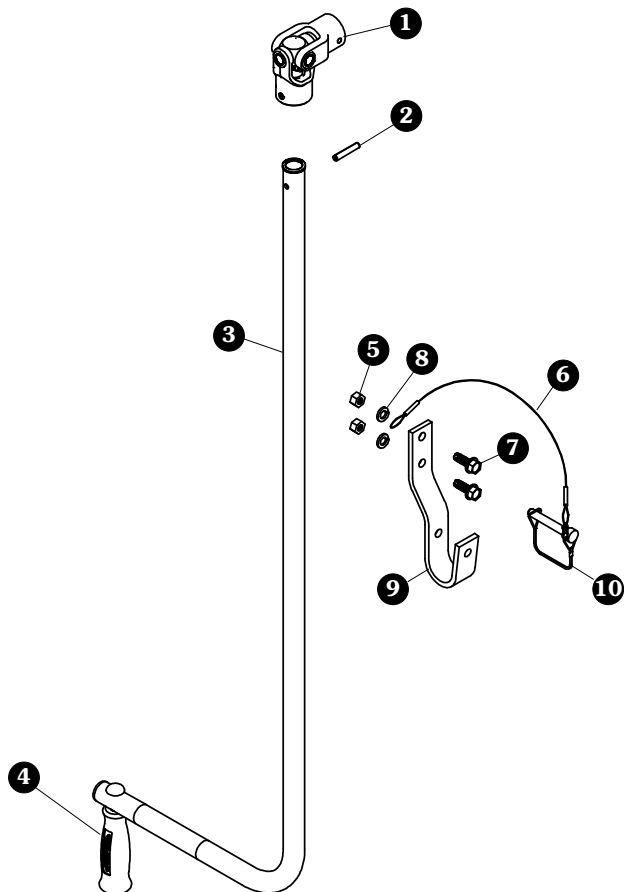
Item	Part #	Description
1.	1704695	Harness Junction Block
2.	1704717	Wire Harness Rubber Plug
3.	1704946	Flanged Top Lock Nut - 5/16"
4.	1704696	Harness Lock Pin - Long
5.	1704711	Harness Lock Pin - Short
6.	1704338	Self-Tapping Screw - 1/4" x 1"
7.	1120670	SMARTwire™ Dual-Conductor Socket
8.	1701045	Cap Screw - 5/16" x 3/4"
9.	1704751	Harness Lock Pin - 1/4" x 7/8"
10.		SMARTwire™ - 4 Ga. x 25' - Plug/Socket
		SMARTwire™ - 4 Ga. x 30' - Plug/Socket
11.	1703231	Cable Tie - 8"
12.	1702108	Wire Clip - 3/4"
13.	1700427	Flat Washer - 1/4"
14.	1704957	SMART2™ Transmitter Cradle
15.	1704958	SMART2™ Transmitter Charger Cable
16.	1122231	SMART2™ Transmitter Remote w/Cradle

**MASTER DISCONNECT SWITCH/CAB WIRING**

Item	Part #	Description
	1118417	Cab Wiring Kit - Master Disconnect
1.	1704284	Face Plate
2.	1704283	Battery Disconnect Rotary Switch
3.	1700398	Self-Drilling Screw - 1/4" x 3/4"
4.	1118323	Disconnect Switch Mounting Bracket
5.	1704187	Lock Nut - 1/2"
6.	1704152	Dome Nut - 1/2"
7.	1703231	Cable Tie - 8"
8.	1704354	40-Amp Modified-Reset Circuit Breaker
9.	1704330	Rubber Insulating Boot
10.	1705105	Ring Terminal - 4 Ga. x 3/8" Stud
11.	1705106	Ring Terminal - 4 Ga. x #10 Stud
12.	1705107	Dual Conductor Wire - 4 Ga. 133 Strand (per foot)
13.	1704378	Dielectric Connector Protector
14.	1115385	Heavy-Duty Dual-Conductor Plug







**CRANK ARMS & CRANK RETAINERS**

Item	Part #	Description
	1101929	Offset Crank Retainer Kit
	1122729	Override Crank w/U-Joint
1.	1700527	Econo U-Joint
2.	1700445	Spring Pin - 1/4" x 1 1/2"
3.	1124947	Crank Arm - 42"
4.	1116110	Crank Handle Kit
5.	1700407	Hex Nut - 3/8"
6.	1100574	Cable w/#5 Interlock Snap
7.	1700400	Self-Tapping Screw - 3/8" x 1"
8.	1700434	Lock Washer - 3/8"
9.	1101930	Crank Retainer Hook
10.	1700526	Wire Lock Pin





# MORE QUALITY PRODUCTS FROM SHUR-CO®

---

- **Genuine Replacement Tarps**
- **Genuine Replacement Parts**
  
- **Agriculture Products**
  - Value Series Shur-Lok®
  - Super Duty Shur-Lok®
  - Shur-Lok® Junior
  - Premium Belt 'n Ratchet
  - Cable-Lok™
  - Turning Point™ Bow
  
- **SMARTrailer™ Accessories for Agriculture Products**
  - SMART2™ Remote
  - SMART1 +™ Remote
  - 4500 Series HD Electric
  - AutoTrap™ Hopper Opener
  - ProTrap® Hopper Opener
  - LiteALL™ Work Lights
  - Cable-Lok™ Electric Upgrade
  - Electric Turning Point™ Bow
  - Value Series Electric
  - Solar Power Pack
  
- **Flatbed Products**
  - ShurTite™ Retractable Tarps
  - Stock Lumber & Steel Tarps
  - Steel Tarps
  
- **Custom Products**
  - Fitted Truck Covers
  - Flat Utility Tarps
  - Bean Drill Covers
  - Shur-Lok® Tarp Cords
  
- **Construction Products**
  - Super Duty Shur-Lok®
  - Shur-Trak II™
  - Cover-Pro II®
  - Turning Point™ Bow
  - IronSide™ Side-Dump System
  - Arm-Matic™
  - DuraPull™
  - Econo-Pull™
  - Turbo Tarp2™
  - 2000 Series
  - 5000 Series
  - Hammer™
  - Bullet™
  - Flash™
  - Long Arm™
  
- **SMARTrailer™ Accessories for Construction Products**
  - 4500 Series HD Electric w/Gate Flex™
  - Shur-Trak II™ Electric Upgrade
  - Cover-Pro II® Electric Upgrade
  - Electric Turning Point™ Bow
  - Solar Power Pack
  
- **Waste Products**
  - The Ox™
  - Quick-Flip III™
  - Sidewinder™
  - Sidewinder™ 350
  - HyTower™ SL
  - HyTower™ DL
  - Double-Flip™

TARPING SYSTEMS & ACCESSORIES

