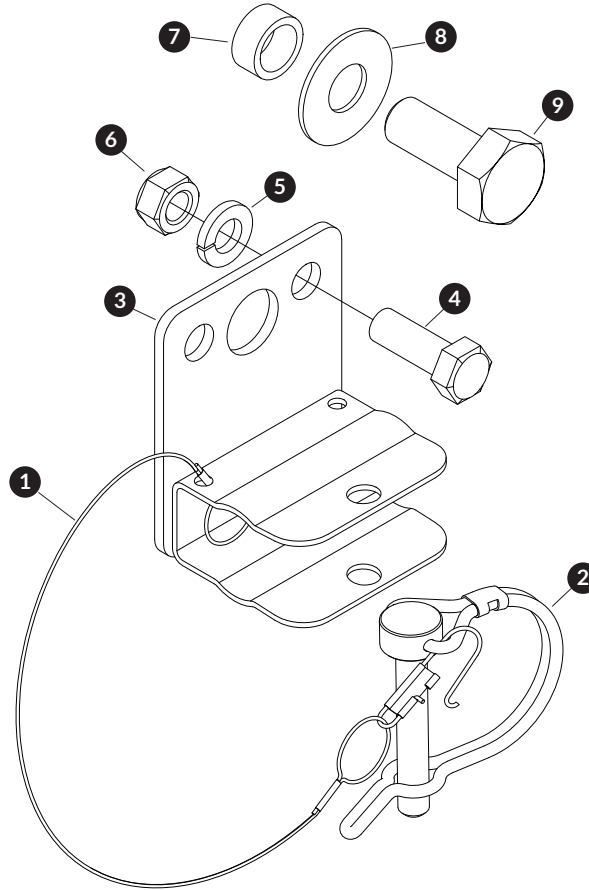


TRAILER MOUNT OPTION

Item	Part #	Description
1.	1100574	Cable w/Interlock Snap - SS
2.	1706506	Wire Lock Pin - 5/16" x 2" - SS
3.	1130839	Crank Retainer - SS
4.	1703579	Cap Screw - 3/8" x 1" - SS
5.	1703576	Lock Washer - 3/8" - SS
6.	1200999	Hex Nut - 3/8" - SS

STANDOFF MOUNT OPTION

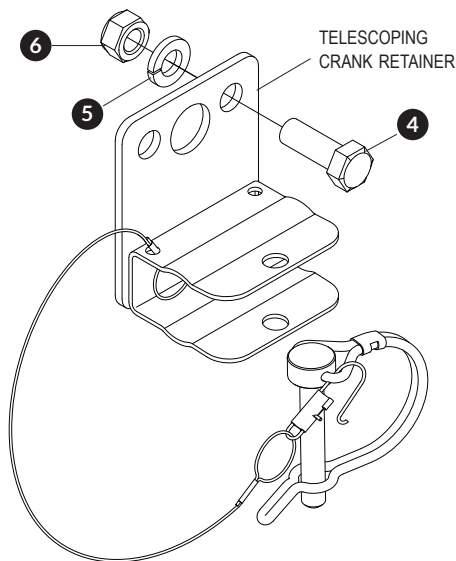
Item	Part #	Description
1.	1100574	Cable w/Interlock Snap - SS
2.	1706506	Wire Lock Pin - 5/16" x 2" - SS
3.	1130839	Crank Retainer - SS
7.	1100306	Bushing - 11/16" x .51" x 5/16"
8.	1703620	Flat Washer - 1/2" - SS
9.	1703619	Cap Screw - 1/2" x 1-1/4" - SS



TRAILER MOUNT OPTION

STEP 1: Determine mounting location on rear of trailer for telescoping crank retainer.

STEP 2: Use either small hole in retaining bracket as guide to mark and drill 13/32" hole in trailer wall. Fasten with stainless steel screw 4, washer 5 and nut 6. Tighten fasteners.



STANDOFF MOUNT OPTION

STEP 1: Fasten telescoping crank retainer to existing crank retainer standoff on rear of trailer with screw 9, washer 8 and bushing 7. Tighten fasteners.

