



TARPING SYSTEMS & ACCESSORIES

P/N 1124110 Rev. B

INSTALLATION INSTRUCTIONS

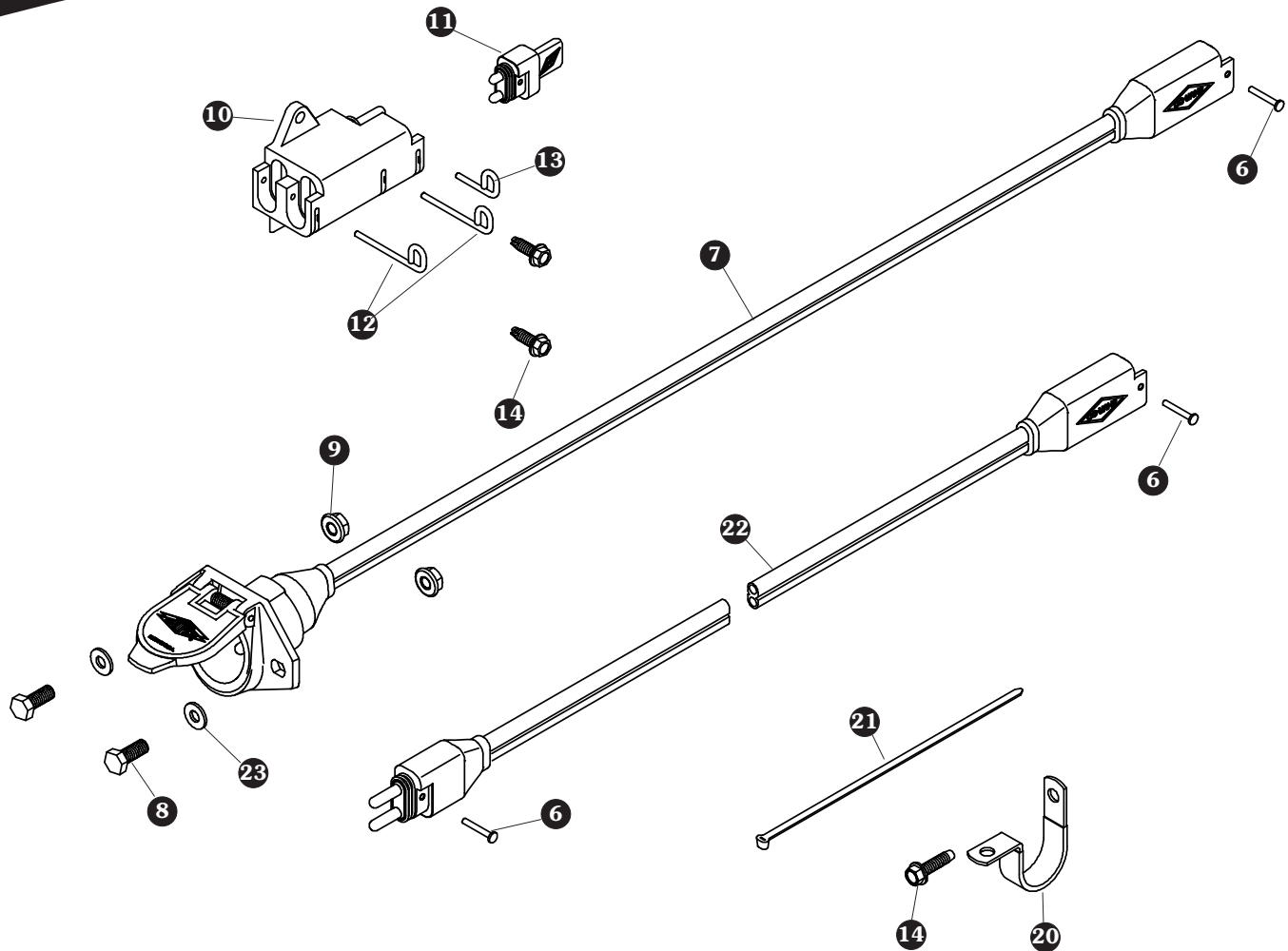


Wiring Four AutoTraps

READ BEFORE INSTALLING

PO BOX 713 ■ 2309 SHUR-LOK STREET ■ YANKTON, SD 57078-0713
PHONE 1-800-4-SHUR-LOK (1-800-474-8756) ■ FAX 605-665-0501
www.shurco.com

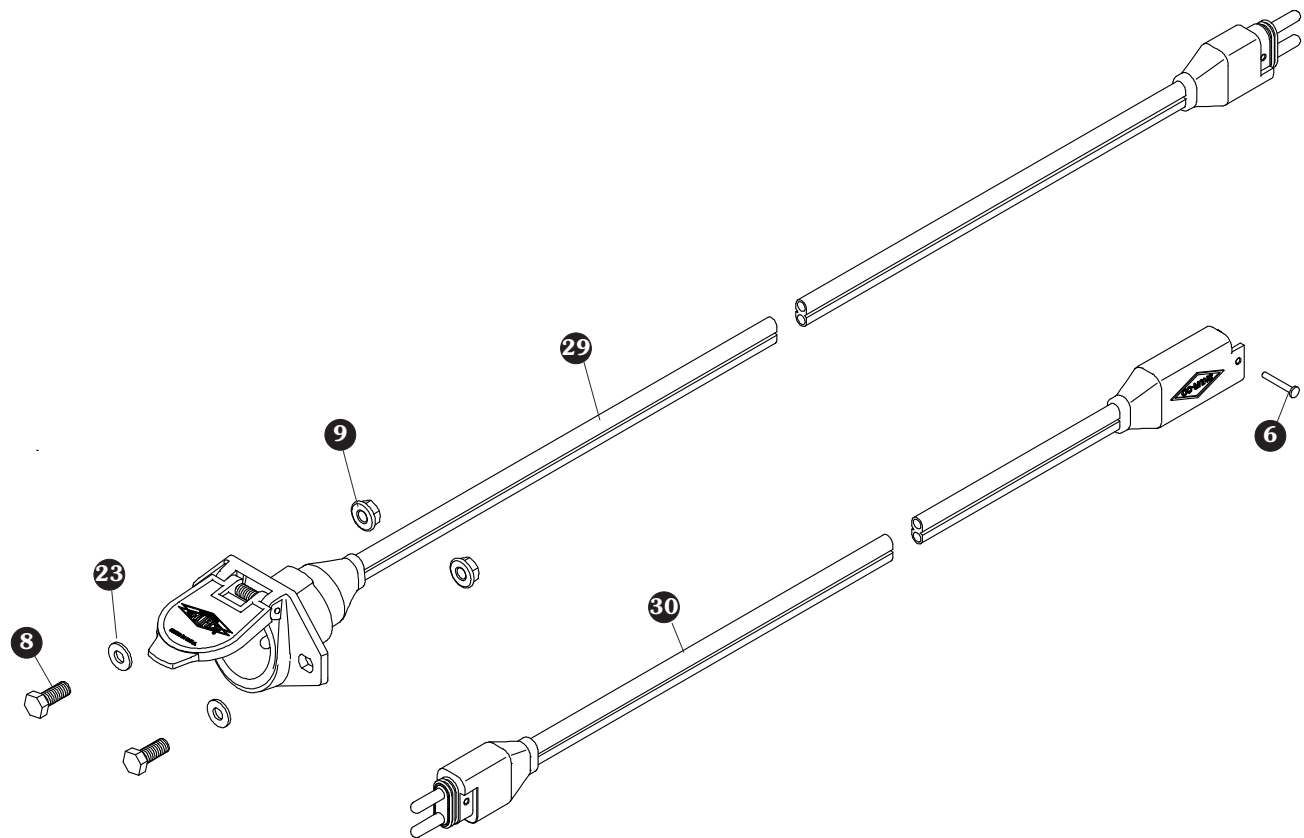
SHOP ONLINE: www.shopshurco.com



SMARTWIRE™ INSTALLATION

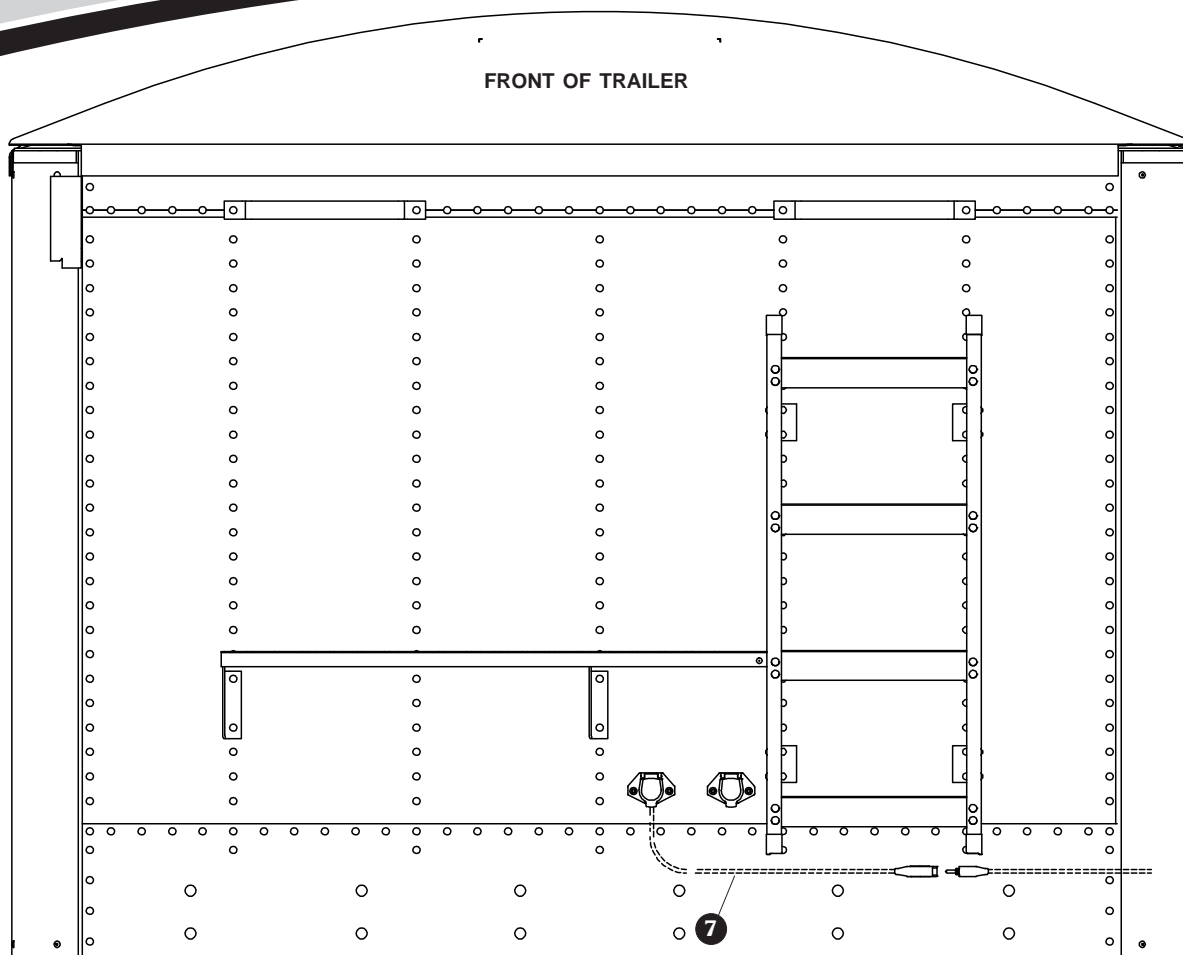
This instruction sheet is supplied with a variety of trailer models, therefore the locations for the SMARTwire™ components shown here may need to vary slightly on your trailer. Mounting locations are critical because wire lengths cannot be altered. Mount SMARTwire™ components as close as possible to the locations shown in order to not only ensure a quick and easy installation but also to facilitate SMARTwire™ upgrades.

Item	Part #	Description
6.	1704751	Harness Lock Pin - 1/4" x 7/8"
7.	1120670	SMARTwire™ Dual-Conductor Socket
8.	1701045	Cap Screw - 5/16" x 3/4"
9.	1704946	Flanged Top Lock Nut - 5/16"
10.	1704695	Harness Junction Block
11.	1704717	Wire Harness Rubber Plug
12.	1704696	Harness Lock Pin - Long
13.	1704711	Harness Lock Pin - Short
14.	1704338	Self-Tapping Screw - 1/4" x 1"
20.	1702108	Wire Clip - 3/4"
21.	1703231	Cable Tie - 8"
22.	1704888	SMARTwire™ - 4 Ga. x 25' - Plug/Socket
23.	1700427	Flat Washer - 1/4"



**LEAD TRAILER WIRING PARTS FOR SUPPLYING
POWER TO REAR/PUP TRAILERS**

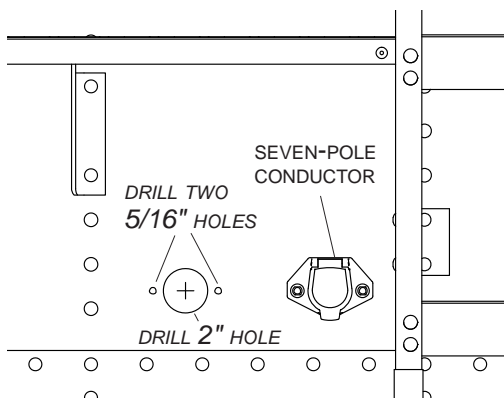
Item	Part #	Description
6.	1704751	Harness Lock Pin - 1/4" x 7/8"
8.	1701045	Cap Screw - 5/16" x 3/4"
9.	1704946	Flanged Top Lock Nut - 5/16"
23.	1700427	Flat Washer - 1/4"
29.	1122541	SMARTwire™ - 4 Ga. x 22' - Dual-Conductor Socket
	1122542	SMARTwire™ - 4 Ga. x 32' - Dual-Conductor Socket
	1122543	SMARTwire™ - 4 Ga. x 40' - Dual-Conductor Socket
30.	1704888	SMARTwire™ - 4 Ga. x 25' - Plug/Socket



NOTE: Wire lengths are predetermined. Before installing SMARTwire™ components, review and confirm wire routing so that wires will reach components with ample room for connection.

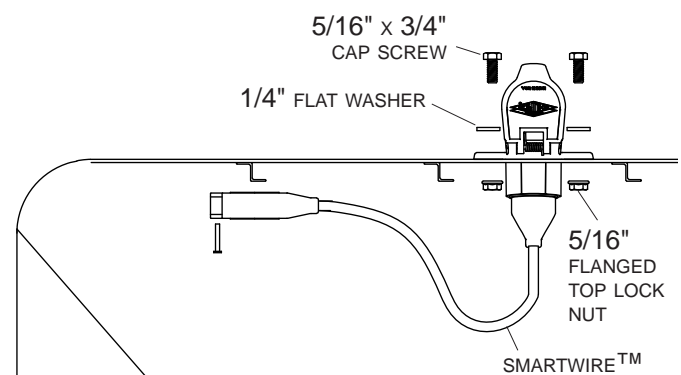
DUAL-POLE CONDUCTOR SOCKET INSTALLATION

STEP 1: Locate dual-pole conductor socket near seven-pole conductor socket as shown. Determine location and drill 2" hole through trailer skin.



STEP 2: Align socket over 2" hole. Using holes in flanges on socket as a guide, mark and drill two 5/16" holes.

STEP 3: Fasten conductor socket to trailer with 5/16" x 3/4" cap screws, flat washers and nuts.



NOTE: Coat each connection with dielectric grease (P/N 1704378) to prevent corrosion.

CAUTION

Do not fasten SMARTwire™ components to trailer through hopper walls.

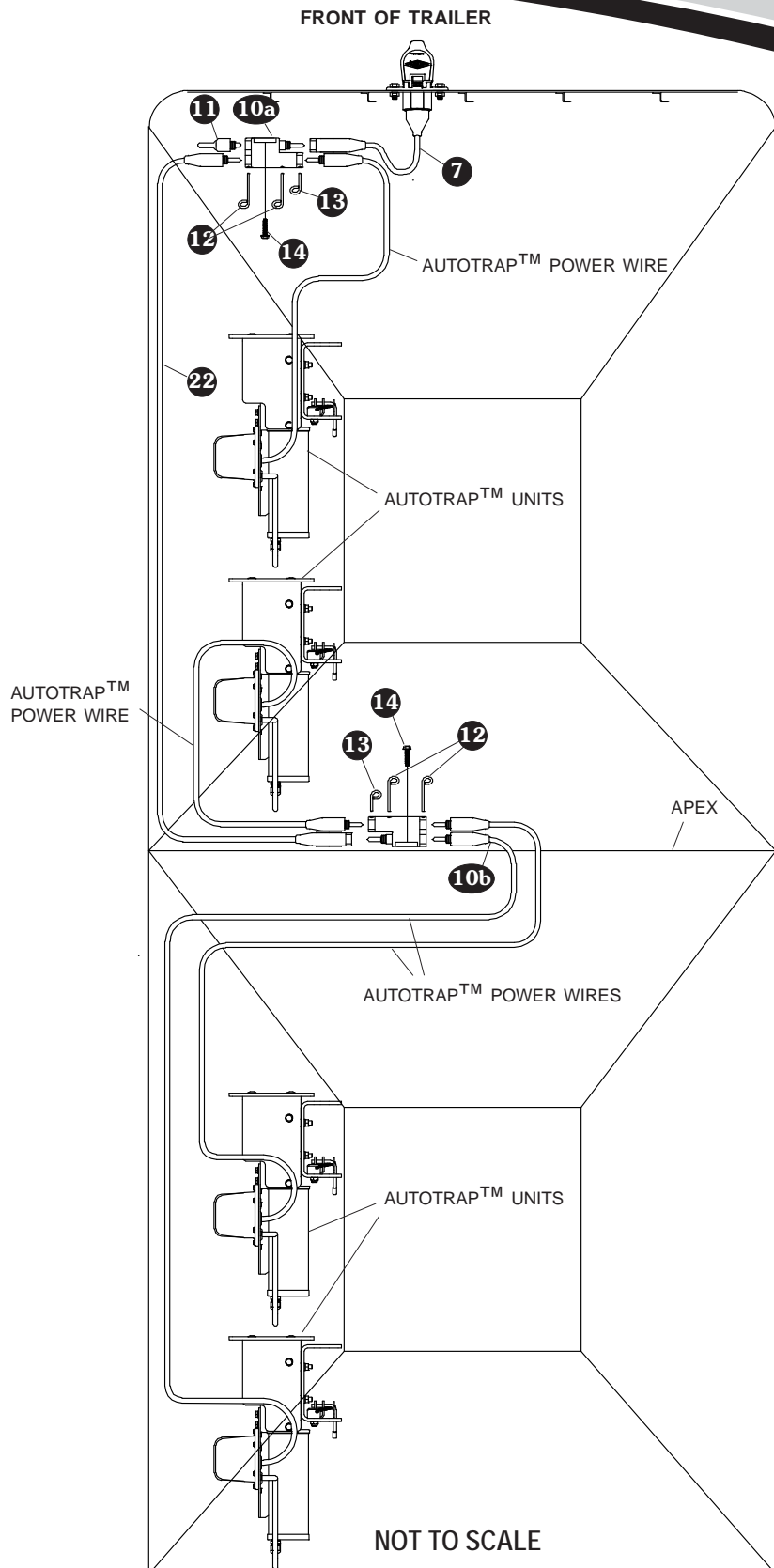
FRONT OF TRAILER

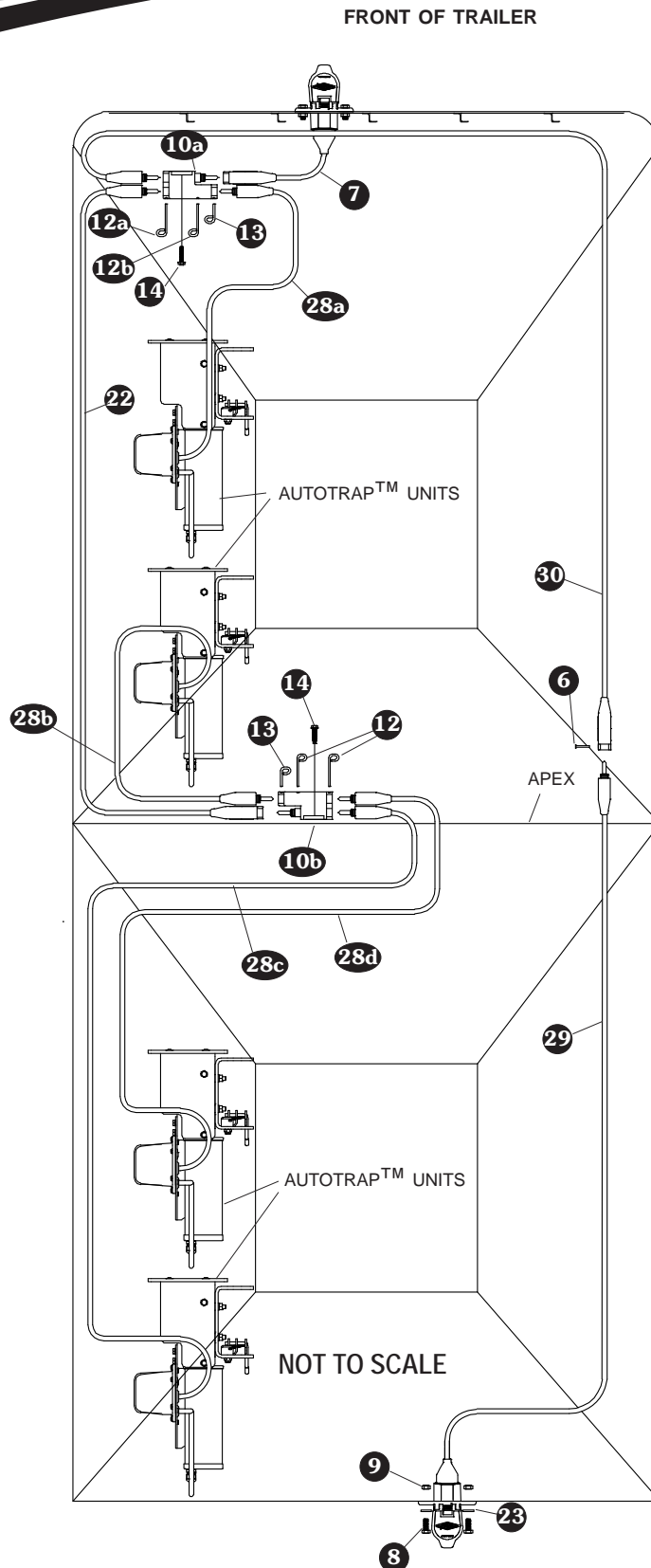
- STEP 1: Route SMARTwire™ 7 along existing wiring on trailer.
- STEP 2: To determine junction block location on front of trailer, route SMARTwires 7 and 22 to where wires will meet. Position junction block 10a at this location. Using holes in junction block as guide, mark and drill two 7/32" holes.
- STEP 3: Fasten junction block 10a to trailer with screws 14.
- STEP 4: Connect SMARTwires 7, 22 and AutoTrap™ power wire to junction block 10a. Insert plug 11 into remaining socket. Secure with lock pins 12 and 13.
- STEP 5: Route SMARTwire™ 22 to apex of trailer.

APEX OF TRAILER

- STEP 6: To determine junction block location, route SMARTwire™ 22 and AutoTrap™ power wires to location on apex where wires will reach. Position junction block 10b at this location. Using holes in junction block as guide, mark and drill two 7/32" holes.
- STEP 7: Fasten junction block 10b to trailer with screws 14.
- STEP 8: Connect SMARTwire™ 22 and AutoTrap™ power wires to junction block 10b. Secure with lock pins 12 and 13.
- STEP 9: Secure all wires to trailer with cable clips 20 and screws 14. If needed, use cable ties 21.

NOTE: For lead/pup trailer configurations, continue on next page.





NOTE: Coat each connection with dielectric grease (P/N 1704378) to prevent corrosion.

CAUTION
Do not fasten SMARTwire™ components to trailer through hopper walls.

FRONT OF TRAILER

STEP 1: Follow wiring instructions on previous page.

STEP 2: Route SMARTwire™ 30 towards rear of trailer and plug into junction block 10a. Secure with lock pin 13.

REAR OF TRAILER

STEP 3: To determine location for conductor socket 29 on rear of trailer, route SMARTwire™ 30 and SMARTwire™ from conductor socket 29 to location near middle of trailer, where wires will reach. Mount conductor socket at this location.

STEP 4: Follow steps 1 to 3 on page 3 to install conductor socket 29.

MIDDLE OF TRAILER

STEP 5: Connect SMARTwires 30 and 29. Secure with lock pin 6.

STEP 6: Secure all wires to trailer with cable clips 20 and screws 14. If needed, use cable ties 21.

MORE QUALITY PRODUCTS FROM SHUR-CO®

- **Genuine Replacement Tarps**
- **Genuine Replacement Parts**

- **Agriculture Products**
 - Value Series Shur-Lok®
 - Super Duty Shur-Lok®
 - Shur-Lok® Junior
 - Premium Belt 'n Ratchet
 - Cable-Lok™
 - Turning Point™ Bow

- **SMARTrailer™ Accessories for Agriculture Products**
 - SMART2™ Remote
 - SMART1 +™ Remote
 - 4500 Series HD Electric
 - AutoTrap™ Hopper Opener
 - ProTrap® Hopper Opener
 - LiteALL™ Work Lights
 - Cable-Lok™ Electric Upgrade
 - Electric Turning Point™ Bow
 - Value Series Electric
 - Solar Power Pack

- **Flatbed Products**
 - ShurTite™ Retractable Tarps
 - Stock Lumber & Steel Tarps
 - Steel Tarps

- **Custom Products**
 - Fitted Truck Covers
 - Flat Utility Tarps
 - Bean Drill Covers
 - Shur-Lok® Tarp Cords

- **Construction Products**
 - Super Duty Shur-Lok®
 - Shur-Trak II™
 - Cover-Pro II®
 - Turning Point™ Bow
 - IronSide™ Side-Dump System
 - Arm-Matic™
 - DuraPull™
 - Econo-Pull™
 - Turbo Tarp2 DONOVAN BRAND
 - 2000 Series DONOVAN BRAND
 - 5000 Series DONOVAN BRAND
 - Hammer DONOVAN BRAND
 - Bullet DONOVAN BRAND
 - Flash DONOVAN BRAND
 - Long Arm DONOVAN BRAND

- **SMARTrailer™ Accessories for Construction Products**
 - 4500 Series HD Electric w/Gate Flex™
 - Shur-Trak II™ Electric Upgrade
 - Cover-Pro II® Electric Upgrade
 - Electric Turning Point™ Bow
 - Solar Power Pack

- **Waste Products DONOVAN BRAND**
 - The Ox™
 - Quick-Flip III
 - Sidewinder
 - Sidewinder 350
 - HyTower SL
 - HyTower DL
 - Double-Flip