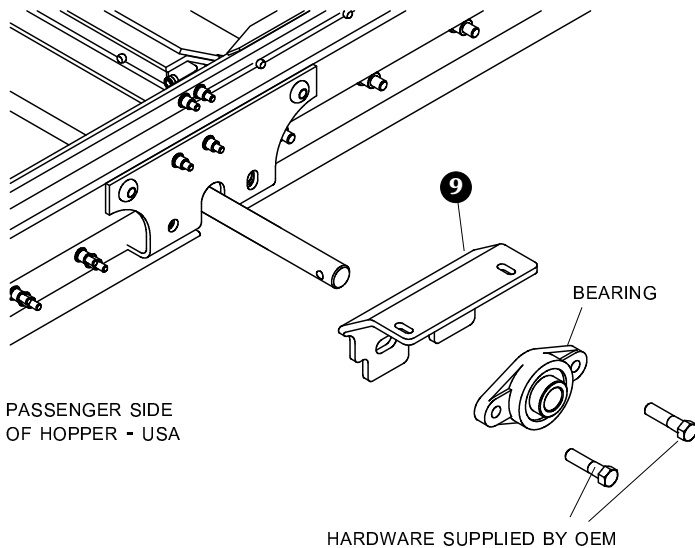


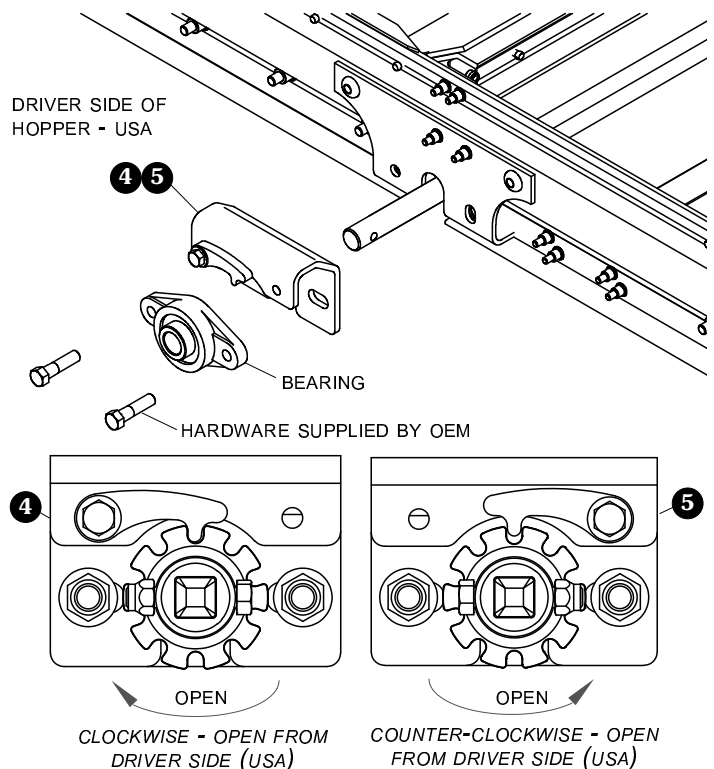
Item	Part #	Description
1.	1705083	Cap Screw - 5/16" x 2"
2.	1704297	Nylon Lock Nut - 5/16"
3.	1705077	MaxxTrap™ Override Adaptor - 7/8"
	1705078	MaxxTrap™ Override Adaptor - 1"
	1124631	MaxxTrap™ Override Weldment
*4.		MaxxTrap™ Override Bracket - Front
*5.		MaxxTrap™ Override Bracket - Rear
6.	1705463	Drive Shaft Coupling
7.	1122726	MaxxTrap™ Assembly - Pass. Side
8.	1705477	O-Ring - 7/8" ID x 1 1/8"
*9.		Gear Box Mounting Bracket
10.	1700427	Flat Washer - 1/4"
11.	1700433	Lock Washer - 5/16"
12.	1705142	Cap Screw - 5/16" x 7/8"
13.	1705480	Bushing - .990" x .895" x 4" - ABS
14.	1705476	Socket Hd. Cap Screw - 3/8" x 1/2"
15.	1700789	Protective Cap - 1.3" ID x 1 5/8"
16.	1701045	Cap Screw - 5/16" x 3/4"
17.	1124845	Universal Debris Deflector
18.	1705487	Bushing (use w/7/8" Shaft)

**Specify make, model and year of trailer*

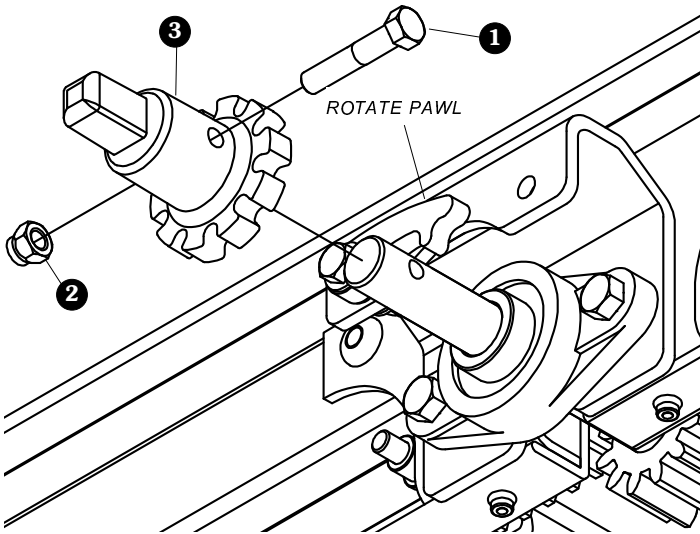
STEP 1: Install gear box mounting bracket 9 between bearing and hopper rail on passenger side (USA) of hopper. Install nuts and tighten just enough so bracket contacts hopper rail but can still move up and down.



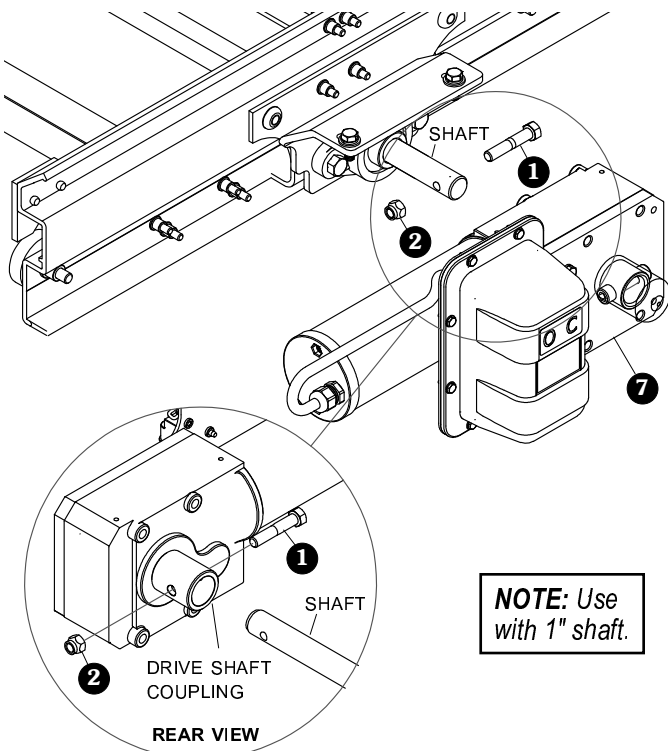
STEP 2: Install override bracket 4 or 5 between bearing and hopper rail on driver side (USA) of hopper.



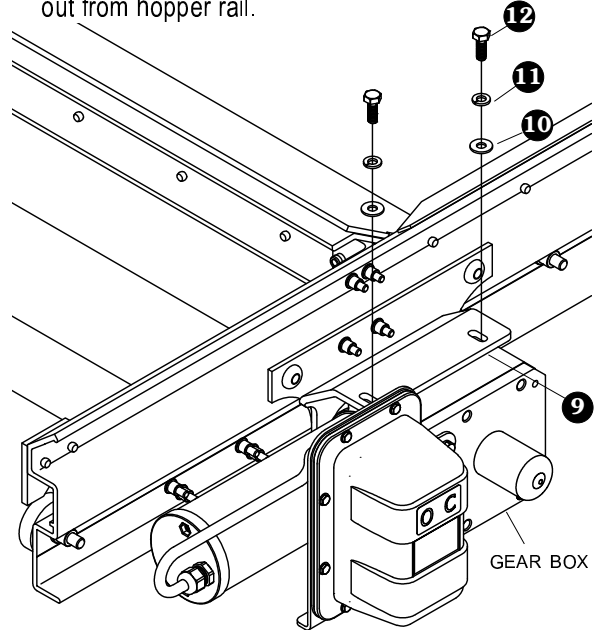
STEP 3: Rotate pawl out of way and fasten manual override adaptor ③ to shaft with screw ① and lock nut ②.



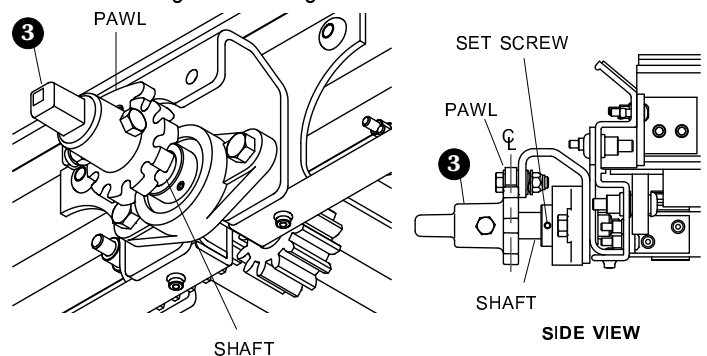
STEP 4: Slide MaxxTrap™ ⑦ over shaft, aligning hole in shaft with hole in drive shaft coupling (hopper shaft may need to be rotated). Secure with screws ① and nut ②.



STEP 5: Fasten screw ⑫, lock washer ⑪ and flat washer ⑩ through gear box mounting bracket ⑨ and into gear box. Snug fasteners so mounting bracket ⑨ contacts gear box but loose enough for gear and shaft to slide in and out from hopper rail.



STEP 6: With set screws in both bearings loosened, adjust hopper shaft left or right so manual override adaptor ③ lock grooves are centered on pawl, as shown below. Retighten bearing set screws.



STEP 7: Tighten screws ⑫ (installed in step 5).

STEP 8: Move hopper shaft up to fully engage pinion gears with rack and tighten all four 7/16" bearing screws and nuts, securing both mounting brackets.

