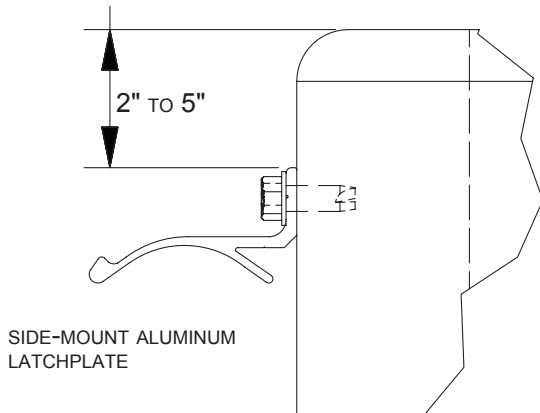


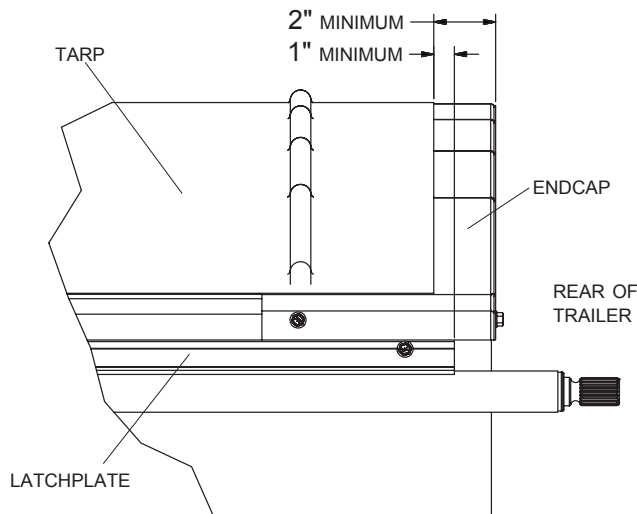
SIDE MOUNT LATCHPLATE

For relocating or installing latchplate, follow steps 1 thru 4.

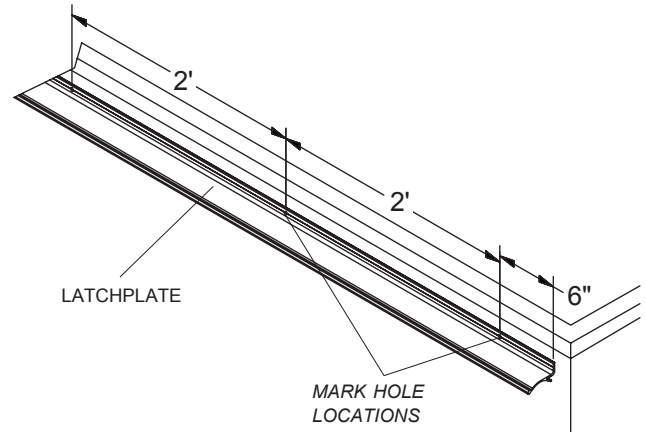
STEP 1: Latchplate must be positioned 2" to 5" down from top edge of rail in an area free from obstruction.



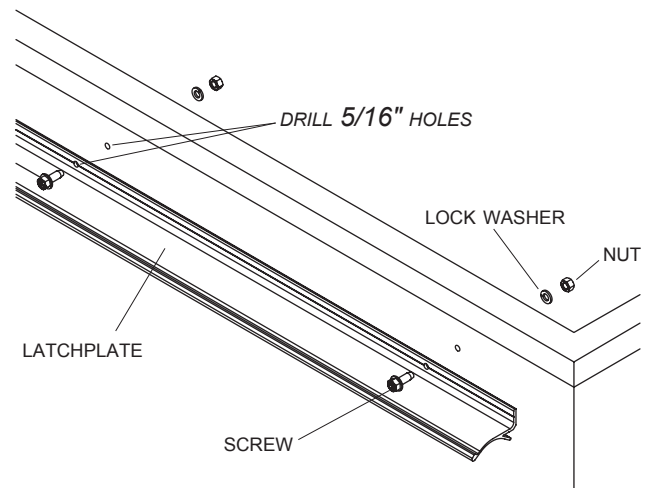
STEP 2: Latchplate should extend past tarp a minimum 1" at rear of tarp. If an aluminum end cap or combo cap is installed, at least 2" of end cap must be visible.



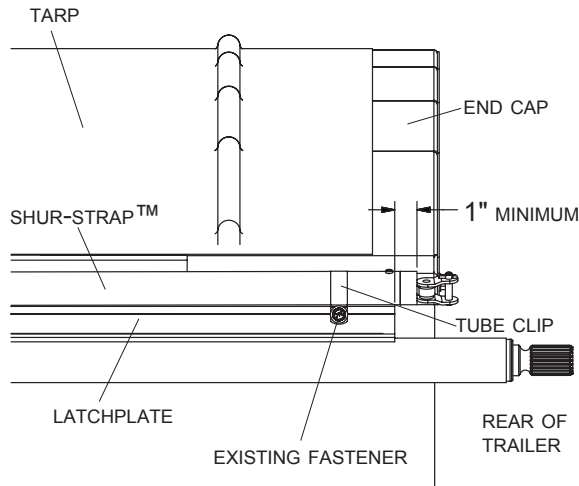
STEP 3: Mark hole locations on latchplate about every 2' apart, with holes no more than 6" from edge.



STEP 4: Drill 5/16" pilot holes through latchplate and box. Fasten with screws, lock washer and nuts.



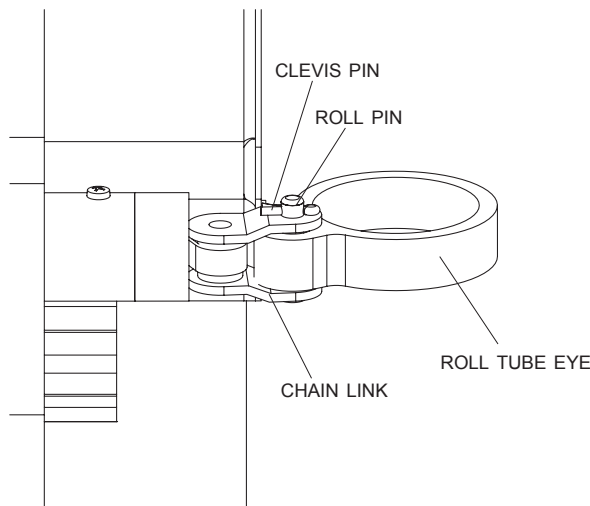
STEP 5: Using the same mounting fasteners in latchplate, attach Shur-Strap™ using tube clips. Extend Shur-Strap™ a minimum of 1" past latchplate.



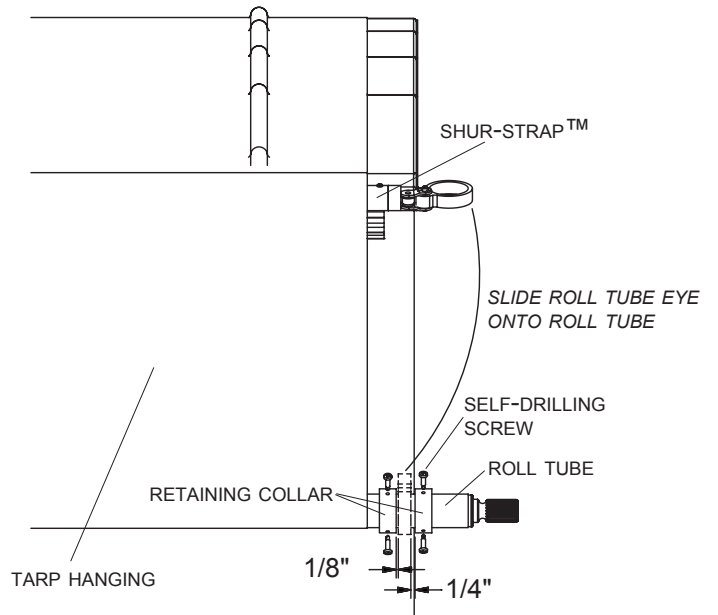
NOTE: If rear of trailer is free of obstacles, return may be mounted past face of end cap, allowing strap to float freely beyond trailer.

CAUTION
Shur-Trap™ must be installed in front of hinge point on any trailer with top hinge.

STEP 6: Secure chain connector link to roll tube eye by removing clevis pin and roll pin from chain link. Connect chain link by sliding roll pin through chain link and roll tube eye. Fasten with clevis pin.



STEP 7: Roll tarp closed. Let tarp and roll tube hang down. Slide retaining collars and roll tube eye onto roll tube at rear of trailer. Align roll tube eye with strap. Space retaining rings about 1/8" to 1/4" from side of roll tube eye. Tighten self-tapping screws to secure each retaining collar.



STEP 8: Roll tarp open and closed to make sure roll tube returns correctly, making sure strap does not come in contact with any sharp edges.