

SHUR TITE

RETRACTABLE TARP SYSTEMS

A Shur-Co® Brand



WWW.SHURTITE.COM

History	pg. 2
Service Centers	pg. 3
ShurTite™ Features	pgs. 4-6
Ordering Your ShurTite™ System	pgs. 7-21
ShurTite™ for Straight Trucks	pg. 22
ShurTite™ for Goosenecks	pg. 23
ShurTite™ for Flatbeds	pg. 24
ShurTite™ for Glass Haulers	pg. 25
ShurTite™ for Drop Decks	pg. 26
ShurTite™ for Double Drop Decks	pg. 27
Order Forms	pgs. 28-39
Installation Tool List	pg. 40
Traditional Flatbed Tarps	pg. 41
Cargo Control	pg. 42
Terms and Conditions	pg. 43



HISTORY

Shur-Co® purchased Roll-Tite™ in 2014, bringing it into their Flatbed Division, adding a retractable tarp system to their already wide array of lumber, steel, and custom tarp offerings and cargo control items.

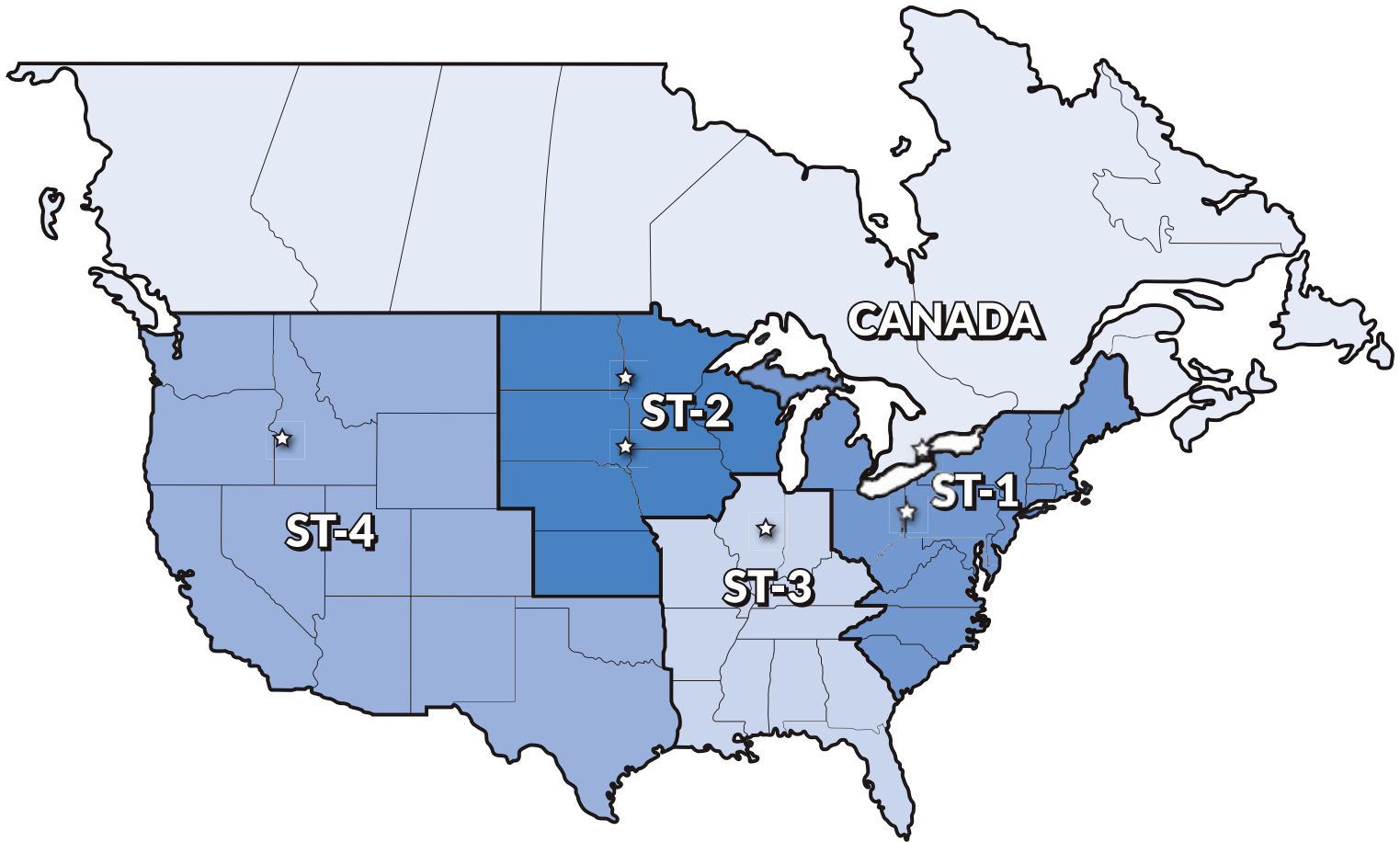
With Shur-Co® adding the ShurTite™ product to its family of products, the access and availability of retractable tarping systems, parts, and tarps is unmatched in the industry. Now, with 11 company-owned sales, service and distribution centers located in the United States and Canada, along with hundreds of Authorized Shur-Co® Dealers, you can be sure that service and support before and after your purchase is never very far away. Our entire team continues to improve and innovate and is ready to accommodate even your most specific requests.

COMPANY TIMELINE

- 1985 Bob Wass and Donny Legue are the first designers of the retractable tarping system.
- 1989 Roll-Tite moves to Norwich from its original location in Tilsonburg.
- 2000 First group photo is taken, and the first show truck is shown in Louisville. (below)
- 2002 A second building is built in Norwich to accommodate 12 install bays, and 15 acres of farm land is purchased for a fenced-in trailer parking area.
- 2003 Roll-Tite opened a shop in Louisville. Orders start picking up and they start shipping 5 units a week to this location.
- 2006 A building in Woodstock, Ontario is purchased to specifically be a tarp shop. Shops are also opened in Texas, Ohio, and Illinois.
- 2007 The first sectional unit called the "Max" is developed. This design proves faulty and is discontinued and replaced with the original one piece system.
- 2009 Roll-Tite goes into receivership but is operating again within 3 months under the Vengrove investment group.
- 2011 Roll-Tite moves into Brantford, Ontario.
- 2014 Shur-Co® acquires Roll-Tite™, integrating the product line into the company's Flatbed division, rebranding it as ShurTite™ – an industry-leading retractable tarping system for flatbed trailers, drop deck trailers, straight trucks and specialty vehicles.
- 2016 Growth continues apace for Shur-Co®, LLC. A new branch dedicated to ShurTite™ installs and repairs is opened in Sioux Falls, SD. The Shur-Co® of IL branch, having outgrown its previous location, relocates to a new 16,000 square foot facility in Decatur, where it adds ShurTite™ installations to its already busy shop activities. Shur-Co of OH® also adds ShurTite™ installs to its lineup of services.



SERVICE CENTERS



SHURTITE™ SERVICE CENTERS:

<p>SHUR-CO® of CANADA 490 Elgin St., Unit #2 Brantford, ON N3X7P8 800.265.0823 FAX: 519.751.3997</p>	<p>SHUR-CO® of ILLINOIS 3993 E. Mueller Ave., Decatur 866.356.0246 FAX: 217.877.827</p>	<p>SHUR-CO® of NORTH DAKOTA 1746 4th Ave. NW, Fargo 877.868.4488 FAX: 701.277.1283</p>	<p>SHUR-CO® of OHIO 4676 Lynn Rd., Rootstown 866.356.0242 FAX: 330.297.5599</p>	<p>SHUR-CO® of SIOUX FALLS, SD 47184 258th St., Suite B 844.573.9322 FAX: 605.543.5469</p>	<p>SHUR-CO® of IDAHO 921 Garber St., Caldwell 208.455.1046</p>
--	---	--	---	--	--

ADDITIONAL SHUR-CO® LOCATIONS:

<p><i>Corporate Offices/Outlet Store</i> SHUR-CO® of SOUTH DAKOTA 2309 Shur-Lok St., Yankton 800.474.8756 FAX: 605.665.0501</p>	<p>SHUR-CO® of FLORIDA 3353 SE Gran Park Way, Stuart 800.327.8287 FAX: 772.287.0431</p>	<p>SHUR-CO® of IOWA 3839 Midway Blvd., Fort Dodge 866.356.0245 FAX: 515.576.5578</p>	<p>SHUR-CO® of MICHIGAN 121 E Sanborn Ave., Croswell 800.327.8287 FAX: 772.287.0431</p>	<p>SHUR-CO® UK Limited Rochester Airport Est., Unit 8 27-43 Laker Rd. Rochester, Kent ME1 3EZ</p>
---	---	--	---	--

SAFE, FAST, AND LIGHTWEIGHT

Our ShurTite™ system saves time and money, allowing easy 1-person operation in minutes. It helps reduce injuries, and operators are able to open and close the system from ground level.

Lightweight and aerodynamic, the ShurTite™ system adds just over 1,700 pounds to a standard 48-foot flatbed trailer, making it 30% lighter than competing retractable systems. It allows you to tarp and untarp your loads quickly and easily.

Kits have only an 8-foot footprint when fully retracted to front or rear. The patented cast aluminum corner design gives you a full inside cube's worth of loading space.

Because the entire system can be opened and closed from ground level, a ShurTite™ system eliminates the risk of falling and the need for costly safety equipment. Tensioners are easy to use, and the front lock is inside the wing extrusion where it stays clean and dry.





SUPERIOR FABRIC / CUSTOMIZABLE TARPING

By insisting on the highest-quality aluminum and tarp fabrics and adhering to strict manufacturing standards, we build systems tough enough to meet the needs of the most demanding applications. Choose from standard system heights of 72-inch, 84-inch, or 100-inch configurations for flatbed trailers and straight trucks – or allow our on-site engineering team to develop your idea into a practical, cost-effective custom retractable tarping system and ensure you get maximum loading height.

Each lot is lab tested for tear strength, abrasion resistance, and cold-temperature flexibility. Reinforced stitching adds strength at stress points, reducing the likelihood of tears.

Tarps are fabricated, depending on the type of trailer configuration, in ShurTite's Classic system – one complete tarp or our exclusive Magnum™ system – made up of individual panels attached to special aluminum extrusions.

Permanent ink graphics or eye-popping digital images will turn your tarp into a moving billboard. There's no better investment than a ShurTite™ retractable tarp for years of reliable service and advertising impact.

SHURTITE™ BENEFITS



INCREASED SAFETY
One point access without attention to the rear of the trailer.



REDUCE WORKERS COMPENSATION
Less physical requirements, just one push of a button to retract tarp.



RETAIN DRIVERS
Less driver turnover with easy-to-operate tarp systems.



INCREASED PRODUCTIVITY
Time = Money
Less time loading = More loads.



ORDERING YOUR SHURTITE™ TARPING SYSTEM

When deciding which Complete Kit to order, choose the part-numbered item below that best meets your trailer type and length. Each kit comes with standard features. These are bulleted (●) and listed in bold type in the Standard Features and Options chart at the right.

Any change affects the cost of your system and is noted as an additional charge (+). If you have questions on options and upgrades, there is a complete list of photos and descriptions on pages 19-20. For more information or pricing, call 800.265.0823 (Canada) or 844.573.9322 (USA).

COMPLETE KITS Standard 102-Inch Width

P/N	TRAILER TYPE	TRAILER LENGTH
2000562	Straight Truck	12' to 15'
2000563	Straight Truck	16' to 19'
2000564	Straight Truck	20' to 26'
2000565	Straight Truck	27' to 33'
2000566	Flatbed	34' to 40'
2000567	Flatbed	41' to 48'
2000568	Flatbed	49' to 53'
2000569	Step Deck	48'
2000570	Step Deck	53'
2000571	Double Drop	48' to 53'

Tarps are fabricated, depending on the type of trailer configuration and length, in ShurTite's Classic system – one complete tarp – or our exclusive Magnum™ system, made up of individual panels attached to special aluminum extrusions. ShurTite's PVC-coated fabric is high gloss with a dual-side lacquered finish. The center panel skylight is made from white vinyl.

STANDARD FEATURES AND OPTIONS

HEADBOARD	
Standard Aluminum	Standard
Flat Aluminum	+
FRONT LOCKS	
Manual-Ground Operated	Standard
Lok-Tite™ Electric Release	+
CHARGING OPTIONS - GEN3 ONLY	
Cab Wire Kit	Standard
Trickle Charge Kit	+
Solar Charge Kit	+
TRACK	
High-Quality Aluminum – Up To 48'	Standard
TiteTrax™	+
Track Guard	+
Folding Track Extension	+
WHEELS	
Maintenance-Free Wheel Assemblies	Standard
REAR DOOR/FLAP	
Rope & Pulley OR Crank	Standard
Aluminum Rear Doors	+
LIFTERS	
Hinged Lightweight Aluminum Assembly	Standard
Additional Lifts – For More Loading Clearance	+
BOWS	
Aluminum – 1-3/8" Inside Radius Corners	Standard
TENSIONING	
Winding Brace	Standard
Dynamic Brace	+
Rear Post w/Rachets	+
Pneumatic Lock Brace	+
TARP OPTIONS	
22-Oz. Vinyl Tarp – Many Standard Color Options	Standard
Skylight Roof	Standard
Non-Standard Colors	+
Ink Graphics	+
Digital Graphics	+
INTERIORS	
Chain Box	+
Dunnage Rack	+
Inside Floodlights (2)	+
Utility Shelf	+
ACCESSORIES	
Rear Step - Passenger Side	+
Rear Step - Driver Side	+
Front Build-Out - 8"	+
Stainless Steel Headboard Wrap	+
Stainless Steel Light Bars	+
Nose Cone – White or Black	+
Access Door	+
Exterior Headboard Lights (5 or 7)	+

COMPARING THE SHURTITE™ TARPING SYSTEMS

FEATURES	CLASSIC	MAGNUM™	GEN3™
Electric Front Release			X
Manual Front Release	X	X	
Flat, Modular Headboard			X
Aerodynamic Headboard	X	X	
Dynamic Rear Tension w/ Spring Adjuster			X
Winding Brace Tension	X	X	
Post and Ratchet	X	X	
Lok-Tite™ Front Release			X
TiteTrax™		X*	X
High-Quality 22-oz. Tarp	X	X	X
1-Piece Tarp	X	X	
Sectional Tarp		X	X

* Traditional Magnum™ track also available for the Magnum™ system.



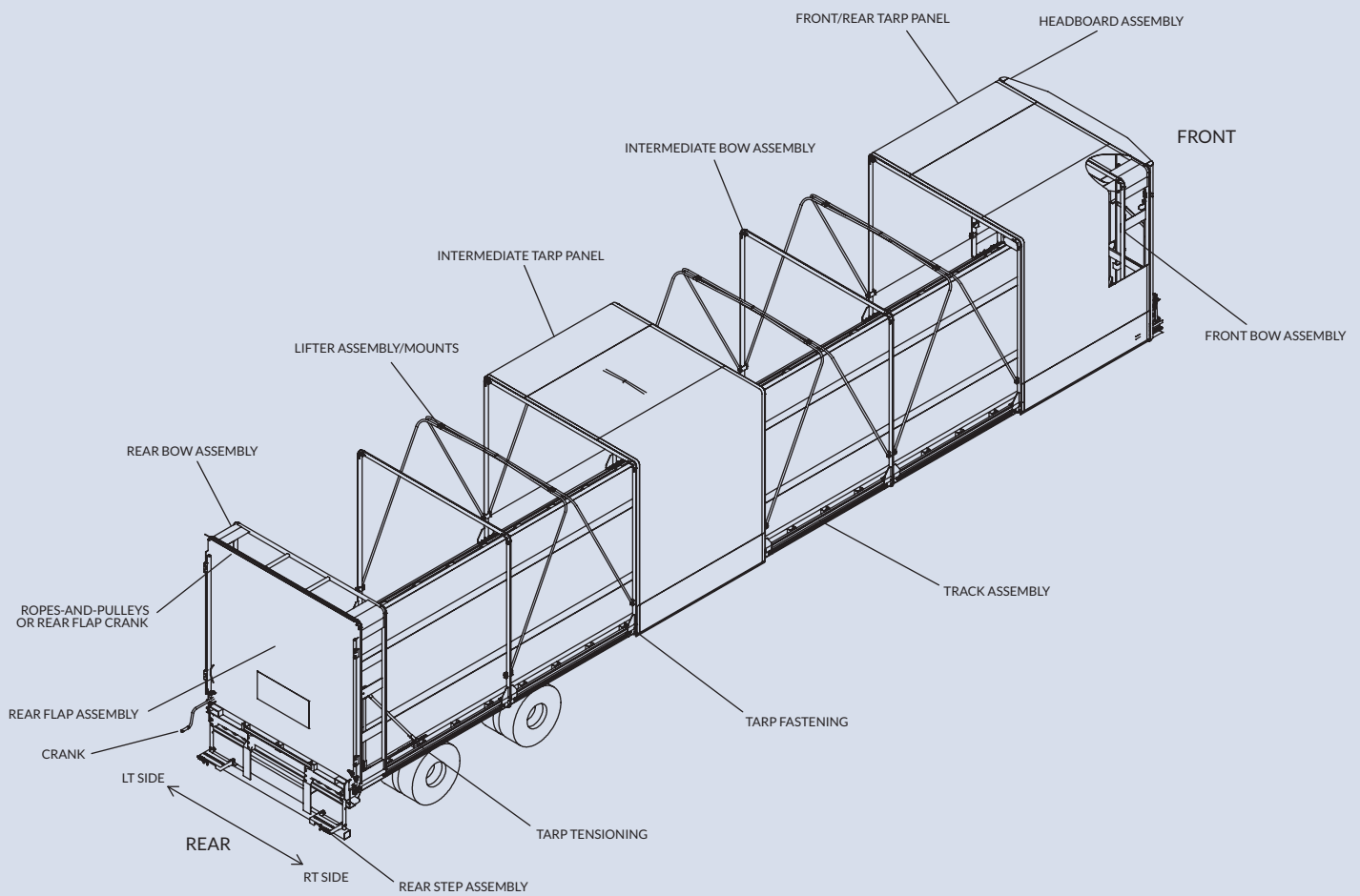
GENUINE SHURTITE™ REPLACEMENT PARTS

Genuine ShurTite™ replacement parts are proven to fit and function better. For quality performance, go with the name you can trust. Remember that utilizing non-Genuine parts voids your warranty. For more information, call our ShurTite™ distribution centers at 800.265.0823 (Canada) and 844.573.9322 (USA).

NOTE: Prices are subject to change without notice. All components other than standard may require a non-refundable engineering fee of \$75 and manufacturing fee of \$25. Call for details.

SYSTEM AND COMPONENT IDENTIFICATION

- 1) FOR TITETRAX™ AND MAGNUM™ SYSTEMS, get the serial number and job number from the aluminum tag located at eye level on the driver side of the headboard.
- 2) FOR CLASSIC SYSTEMS, get the last 5 digits of the trailer VIN number.
- 3) Fill out the measurement sheet (*see pages 27-38*) that most closely resembles your trailer/truck.



TARPS



DIGITAL GRAPHICS

- Additional visual potential for amazing tarp presentations.
- Printed directly on the fabric.
- Best choice for complicated designs and any full-color photographic design.
- Flat price per design.



HIGH-GLOSS FABRIC

- 40 colors available.
- PVC-coated polyester, high-density weave.
- UV and mildew resistant.
- Multi-panel welded construction is reinforced at stress points.



INK GRAPHICS

- Long-lasting, economical.
- Primarily used for type and logo designs.
- Stenciled directly on tarp in bold and basic designs.
- Price is based on number of colors and number of panels.



SKYLIGHT ROOF

- Standard on every tarp.
- Bright white skylight panel runs full length of tarp.
- Increases daytime visibility and lets extra light into cargo area.
- Constructed from white vinyl.

HIGH-GLOSS FABRIC COLORS

IN-STOCK COLORS

				
008 - Transparent	907 - White	911 - Silver	717 - Gray	705 - Light Gray
				
763 - Pale Gray	905 - Black	323 - Viola	590 - Navy Blue	566 - Cobalt Blue
				
543 - Royal Blue	537 - Gentian Blue	549 - Light Blue	679 - Moss Green	682 - Russian Green
				
636 - Holland Green	619 - Lime	143 - Light Ivory	123 - Tan	119 - Brilliant Yellow
				
168 - Zinc Yellow	221 - Orange	244 - Pure Orange	356 - Red	311 - Beaujolais
				
830 - Chocolate				

SPECIAL-ORDER COLORS

				
746 - Gray White	729 - Light Gray	788 - Mouse Gray	544 - Ultra Marine	557 - Ultra Blue
				
572 - Blue	663 - Emerald Green	602 - Brilliant Green	141 - Pearl White	170 - Warsteiner Yellow
				
101 - Cosmos Yellow	107 - Broom Yellow	148 - Gold Yellow	175 - Chrome Yellow	137 - Narcissus Yellow
				
206 - Deep Orange	290 - American Red	340 - CocaColaRed 2000	370 - Carmine Red	

* The above colors may not reflect exact tarp color.

HEADBOARDS



STANDARD ALUMINUM

- Aerodynamic 3/16-inch plated headboard.
- Reinforced by vertical posts for additional strength.
- Access door for easy entrance available at additional cost.
- Comes standard with 2 corner marker lights.
- Not compatible with Lok-Tite™ design.
- Takes up only 9 inches of deck space.
- Bolted application with minimal welding.



FLAT (GEN3™)

- Requires just 3 inches of deck space.
- Slim modular design allows for quick and easy replacement of side covers and panels.
- Access door for easy entrance available at additional cost.
- Comes standard with 2 corner marker lights.
- Lok-Tite™ compatible.
- Bolt-on installation with weldable gusset support.



STAINLESS STEEL WRAP

- Standard aerodynamic headboard.
- Mirror-finish stainless steel skin.
- Increases system's sharp appearance.
- Stands up better to corrosion.
- Access door for easy entrance available at additional cost.
- Comes standard with 2 corner marker lights.
- Not available on GEN3™ flat headboard.



NOSE CONE

- Add on to ShurTite's already aerodynamic headboard.
- Allows additional fuel savings.
- Available option for the GEN3™ flat headboard.

FRONT LOCKS



MANUAL FRONT LOCK

- Ground-operated sliding front lock assembly.
- Integrated lever control allows system to be detached off headboard for increased loading versatility.

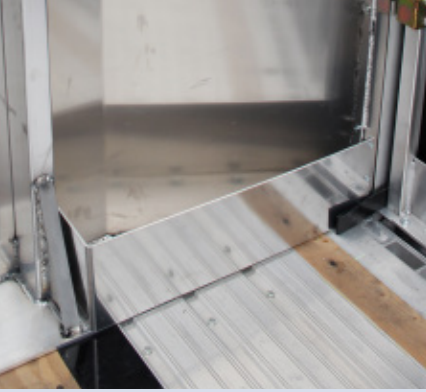


LOK-TITE™ FRONT RELEASE (GEN3™)

- Driver side operation.
- Simple push-button operation.
- Dual, high-torque motors.
- Close and lock system in under 10 seconds.



* Shown above is the inside latching mechanism of the Lok-Tite™ Front Release.



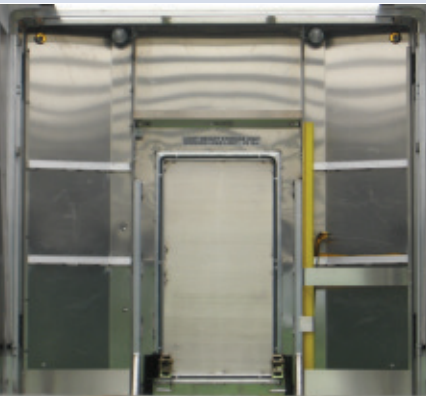
CHAIN BOX

- Convenient, close-at-hand location.
- Keeps cargo control items, like chains and binders, dry and clean.



DUNNAGE RACK

- Easy-access storage for all types of dunnage material for over-the-road hauling.
- Convenient location inside headboard.



FLOODLIGHTS

- Illuminates deck space.
- Necessity for night-time loading or in areas with poor lighting.
- Easily mounts to headboard.
- Set of 2 interior floodlights available
- Do not protrude into deck loading space.



UTILITY SHELF

- Ideal for lightweight storage.
- Provides accessible space for miscellaneous ropes, straps, and ratchets.
- Working load limit of 25 lbs.

CHARGING OPTIONS (GEN3™)



CAB WIRE KIT

- Trailer must be connected to truck to operate.
- Standard charging option.
- Independent of trailer's 7-pin plug.



TRICKLE CHARGE KIT

- Charges battery from truck.
- Needs truck to recharge the battery.
- Pulls power off of trailer's 7-pin plug.



SOLAR CHARGE KIT

- Charges battery from solar panel.
- Does not need truck to operate.
- No additional power plug required.

TRACKS



MAGNUM™ TRACK

- Lightweight aluminum.
- Flexes with trailer, resists side impact.
- Removable air deflector repels debris.
- Polymer insert prolongs track life.
- Allows winch or strap use via rub rail.
- Replaceable nylon wear strip.



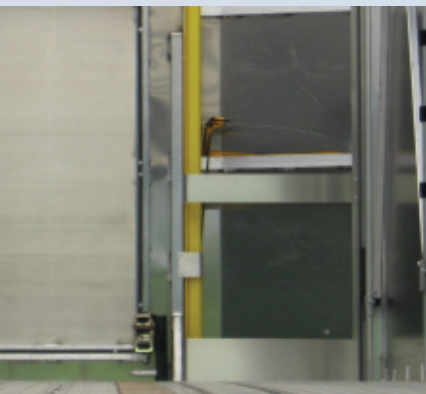
TITETRAX™

- New profile design eliminates trough and prevents debris from accumulating.
- More rigid bows result in less movement during transport.
- More rugged track reduces damage from lift truck impacts.
- Replaceable nylon wear strip.
- Aluminum light bar accepts conspicuity tape and LED lights.
- Polymer insert prolongs track life.



TRACK GUARD

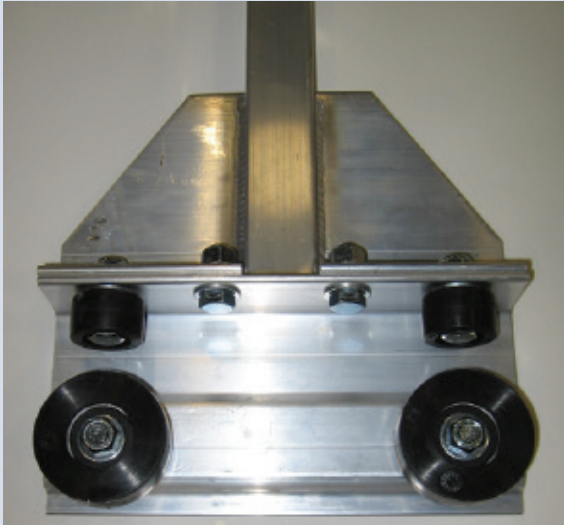
- Added safety measure against aggressive forklift drivers.
- Quickly drops into position over track.
- For use with Magnum™ track.



TRACK GUARD HOLDER

- Securely holds track guard in upright position.
- Facilitates easier access.
- Organized storage when not in use.
- Located within the headboard.

WHEELS



** Traditional Magnum™ track wheel assembly shown.*

MAINTENANCE-FREE WHEELS

- Maintenance-free 1-piece construction.
- Durable and built for longer life.
- Molded wheel-and-bearing assembly fabricated from nylon and deep groove ball bearings.



** TiteTrax™ track wheel assembly shown.*

BOWS/LIFTERS



ALUMINUM BOW

- Tarp support of extruded aircraft-quality aluminum.
- Standard heights of 72, 84, and 100 inches.
- Modular bolted construction.
- Lessens maintenance downtime with no-weld repairs.



BOW CORNER

- Cast aluminum bow corners with a 1 3/8-inch inside radius to optimize loading capacity.
- Easy to replace, reducing downtime repairs and costs.



LIFTER

- Lightweight hinged lifter reduces droop when system is in open position.
- Increased loading capacity.
- Extra lifters are available for even more top-to-bottom clearance when opening and closing the system.

EXTENSIONS



FOLDING TRACK EXTENSIONS

- Allows tarp system to be completely removed from deck space.
- Optimal loading access and increased load flexibility.



FRONT BUILD-OUT

- Sturdy 8-inch extension.
- Connection fittings allow headboard to be mounted off deck to increase deck space.
- Bottom is capped off to keep out debris around air lines.

TENSIONING DEVICES



EXTERNAL/INTERNAL POSTS WITH RACHETS

- Flatbed completely exposed for flexible loading and unloading.



WINDING BRACES

- Standard tensioning system.
- Crank operated.
- Allows for smooth and even tensioning from front to back.



PNEUMATIC TENSIONING

- Permits system to open and close from front without opening the rear.
- No strap or cranks.



DYNAMIC REAR TENSIONING (GEN3™)

- Compensates for varying temperatures and camber changes as trailer load changes.
- Removable spring-loaded rear brace.
- Provide constant tarp tension.

REAR STYLES



DOOR ASSEMBLY

- Solid aluminum doors.
- Secure your load by locking doors.



REAR STEP

- Safer, easier means of accessing the deck.
- Can be used on either or both sides of trailer.



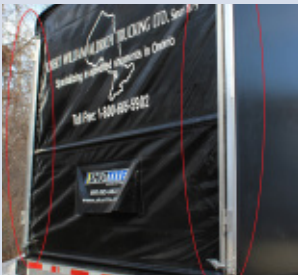
ROPE- AND-PULLEY

- Convenient rope-and-pulley with lock bars to secure flap.
- Bottom grommets aid tie-down.
- Rope-and-pulley offers simple, easy operation without using a crank handle.



CRANK OPERATION

- Allows rear flap to be completely rolled up onto top of tarp for open loading space.
- Rolls quickly for easy access to interior of trailer.



OVER 90 BARS

- Aluminum heavy duty.
- Quickly releases with bottom latch.
- Can be used with either rope-and-pulley or crank.



VELCRO

- Clean look
- Usually used with heavy digital graphics.
- Can be used with either rope-and-pulley or crank.



STRAIGHT TRUCK APPLICATIONS

A ShurTite™ system is the ideal way to get the most versatility from straight trucks, tilt decks or utility trailers. Our in-house engineers can provide a solution for most applications, to make tarping easy.

The ShurTite™ system for 8-foot to 33-foot straight trucks and utility trailers features a heavy-duty headboard solidly built from high-strength aluminum extrusions and 3/16-inch sheet.

GOOSENECK APPLICATIONS

Our ShurTite™ systems are custom designed to accommodate whatever you might be hauling! Whether you're carrying construction supplies or antique tractors, our retractable tarps feature safe and easy operation.

If you're ready to cover your gooseneck trailer, this is the retractable tarp for you!





FLATBED APPLICATIONS

You get maximum clearance for overhead, rear end, or side loading! The 48-foot ShurTite™ kit compacts to only 8 feet – the smallest open footprint in the industry. Even the 53-foot kit compacts to just 8 feet, 9 inches.

ShurTite™ is all about accessibility. The tarping system for 48-foot to 53-foot flatbed trailers open from the front or rear and can be locked into place at any point along the system.

B-Train Applications Available. If you have a B-Train in combination of 20 to 26-foot flatbed and an additional 27 to 33-foot flatbed, we've got you covered. Be sure to fill out two flatbed measurement forms for each separate flatbed to ensure a proper fit.

GLASS-HAULER / SPECIALTY APPLICATIONS

Glass-hauling systems are designed with a specialty all-aluminum headboard and unique monorail system that mounts on top of the A-frame and opens from the rear.

The typical ShurTite™ configuration for glass-hauler applications will add approximately 1,050 pounds to your trailer, making it a lightweight choice for your hauling application.





DROP-DECK APPLICATIONS

The ShurTite™ system for drop-deck trailers is the only one in the industry that can clear either deck for maximum loading flexibility. Lower deck bows have a double set of wheels to transition to the top deck.

The lower deck tarp section will transition completely to the upper deck, leaving the entire lower deck open for loading. The upper deck tarp section will transition, along with the lower tarp section, all the way to the rear of the trailer.

Our unique front bow piggyback connector ties the front bow to lower intermediate bows, allowing the upper deck to be completely exposed. Modular construction of the bows minimizes downtime from accidental damage.

Inside height will accommodate most 20-foot and 40-foot containers, and the injection-molded aluminum corners with 1-3/8-inch radius maximize internal cube space. Extra lifters are also available for even more top-to-bottom clearance while opening or closing the system.

DOUBLE DROP-DECK APPLICATIONS

Lower deck bows come equipped with a triple set of wheels to transition to either front or rear raised decks. Drops must constitute a difference of 8 inches to completely transition system from front to rear.

The solidly built ShurTite™ system for 48-foot to 53-foot double drop-deck trailers offers the ultimate accessibility, opening from the front or rear, with a standard access door and center skylight for better daytime accessibility. Front and rear piggyback connectors tie the front and rear bows to the lower intermediate bows.

Inside height will accommodate most 20-foot and 40-foot containers. The patented extruded corner design gives you a full inside cube's worth of loading space.



STRAIGHT TRUCK ORDER FORM

Rev. 08-19

ShurTite™ tarps are custom-made to order and are non-returnable, so the correct physical measurements are essential for proper tarp fit. Be sure to provide all requested information or your order may be delayed. Do NOT use universal body or trailer sizes. Instead, use ACTUAL MEASUREMENTS provided in INCHES.

Use diagram below to help determine correct measurements for ordering. Trailer **MUST BE AIRED UP** and hooked to the truck or the fifth-wheel height set to 48" from the ground BEFORE taking measurements. Width of deck is from outside rub rail to outside rub rail. Additional information needed is noted on reverse side.

CONTACT INFORMATION

NAME _____

ADDRESS _____

EMAIL _____

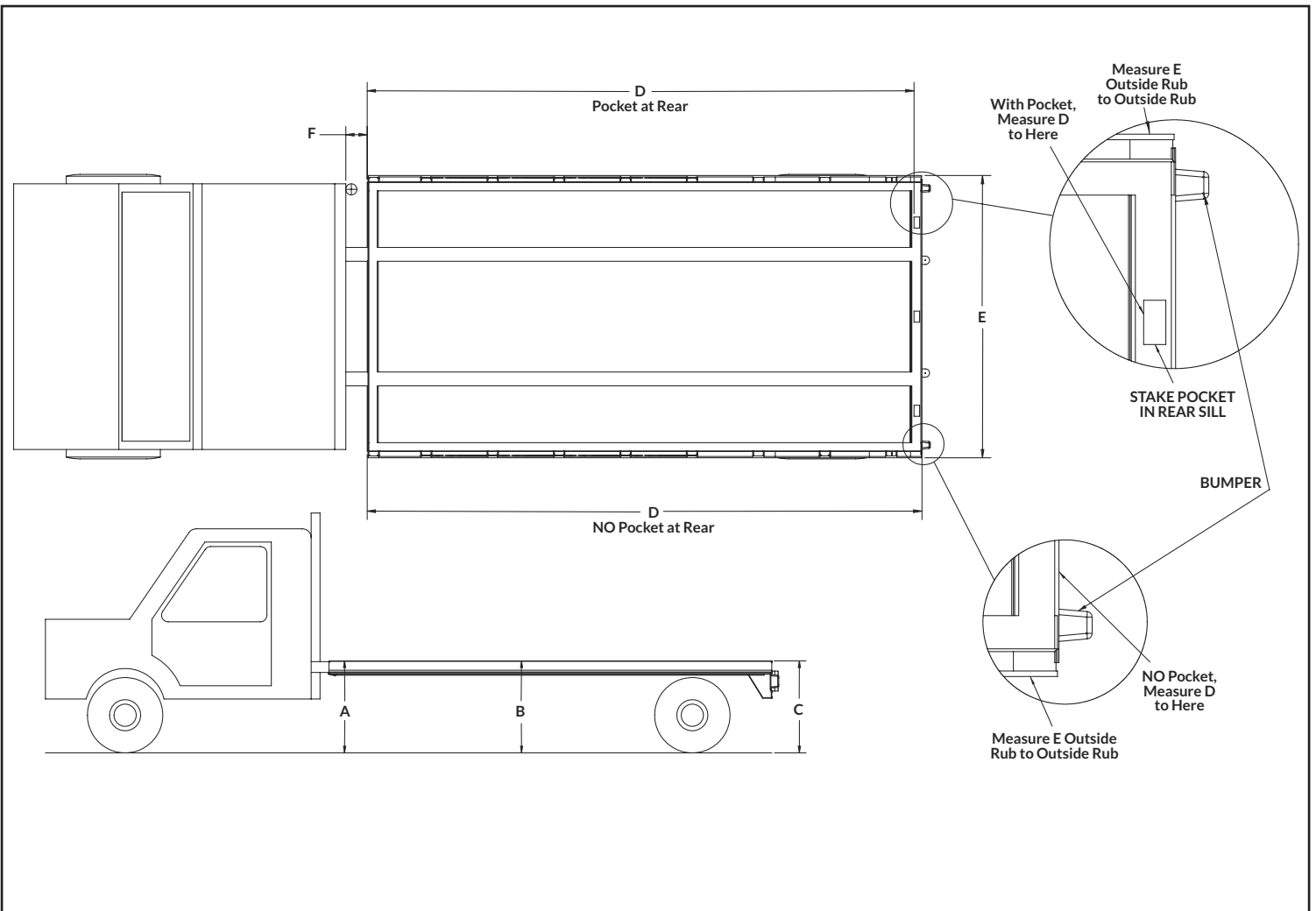
CITY _____ STATE _____ ZIP _____

PHONE _____ FAX _____

TRAILER DIMENSIONS

- A _____ FRONT HEIGHT
- B _____ MID DECK HEIGHT
- C _____ REAR DECK HEIGHT
- D _____ DECK LENGTH
- E _____ DECK WIDTH
- F _____ CAB-TO-DECK LENGTH

RUB RAIL STEEL ALUMINUM



I hereby certify that these measurements are accurate. I accept responsibility for any and all inaccurate measurements. I understand that I will be held financially responsible for any and all costs incurred with the production of my system based on these given measurements.

SIGNATURE _____ TITLE _____

STRAIGHT TRUCK ORDER FORM

TRACK: MAGNUM TITETRAX™

EXTRA OPTIONS

- EXTRA LIFTERS
- QUAD LIFTERS
- REAR STEP
 - PASSENGER SIDE STL OR AL (Circle One)
 - DRIVER SIDE STL OR AL (Circle One)
- FOLDING TRACK EXTENSION
- TRACK GUARD (Magnum ONLY)
- STAINLESS STEEL LIGHT BAR

TRAILER

- REUSING TRACK
- LOWERING ADDITIONAL LIGHTS
 - EXCLUDES CORNER, MARKER & ABS
- REMOVING OLD TARP SYSTEM
- ADDITIONAL TRAILER WORK

SYSTEM HEIGHT

- 100" STANDARD (98" Inside Height)
- 84" STANDARD (82" Inside Height)
- 72" STANDARD (70" Inside Height)
- OTHER _____

ADDITIONAL NOTES

HEADBOARD

- RE-USING HEADBOARD
- STAINLESS STEEL WRAP
- MAN DOOR
- CHAIN BOXES 1 OR 2 (Circle One)
- DUNNAGE RACKS 1 OR 2 (Circle One)
- UTILITY TRAY
- NOSE CONE WHITE OR BLACK (Circle One)
- INSIDE FLOOD LIGHTS
- ADDITIONAL HEADBOARD LIGHTS - 5 Total

TARP

- COLOR _____
- GRAPHICS

BACK FLAP

- ROPE & PULLEY
- CRANK ARM
- OVER 90° BARS
- VELCRO® WINGS
- GRAPHICS

TENSIONING SYSTEM

- WINDING BRACE
- PNEUMATIC BRACE
- POST & RATCHET

SIGNATURE _____

TITLE _____

GOOSENECK TRAILER ORDER FORM

Rev. 08-19

ShurTite™ tarps are custom-made to order and are non-returnable, so the correct physical measurements are essential for proper tarp fit. Be sure to provide all requested information or your order may be delayed. Do NOT use universal body or trailer sizes. Instead, use ACTUAL MEASUREMENTS provided in INCHES.

Use diagram below to help determine correct measurements for ordering. Trailer **MUST BE AIRED UP** and hooked to the truck or the fifth-wheel height set to 48" from the ground BEFORE taking measurements. Width of deck is from outside rub rail to outside rub rail. Additional information needed is noted on reverse side.

CONTACT INFORMATION

NAME _____

ADDRESS _____

EMAIL _____

CITY _____ STATE _____ ZIP _____

PHONE _____ FAX _____

TRAILER DIMENSIONS

A _____ FIFTH WHEEL HEIGHT

B _____ FRONT DECK HEIGHT

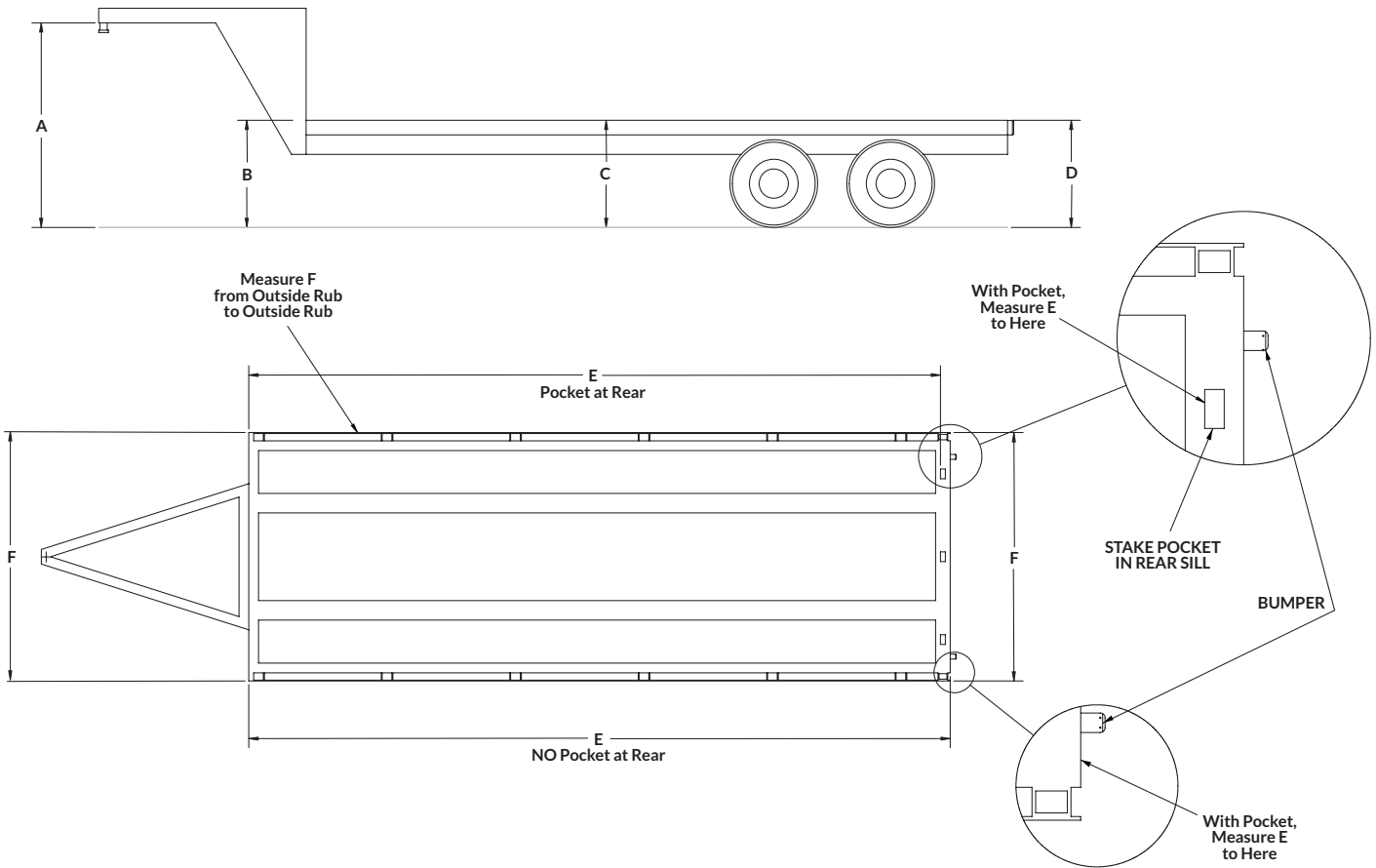
C _____ MIC DECK HEIGHT

D _____ REAR DECK HEIGHT

E _____ DECK LENGTH

F _____ DECK WIDTH

RUB RAIL STEEL ALUMINUM



I hereby certify that these measurements are accurate. I accept responsibility for any and all inaccurate measurements. I understand that I will be held financially responsible for any and all costs incurred with the production of my system based on these given measurements.

SIGNATURE _____

TITLE _____

GOOSENECK TRAILER ORDER FORM

TRACK: MAGNUM TITETRAX™

EXTRA OPTIONS

- EXTRA LIFTERS
- QUAD LIFTERS
- REAR STEP
 - PASSENGER SIDE STL OR AL (Circle One)
 - DRIVER SIDE STL OR AL (Circle One)
- FOLDING TRACK EXTENSION
- TRACK GUARD (Magnum ONLY)
- STAINLESS STEEL LIGHT BAR

TRAILER

- REUSING TRACK
- LOWERING ADDITIONAL LIGHTS
 - EXCLUDES CORNER, MARKER & ABS
- REMOVING OLD TARP SYSTEM
- ADDITIONAL TRAILER WORK

SYSTEM HEIGHT

- 100" STANDARD (98" Inside Height)
- 84" STANDARD (82" Inside Height)
- 72" STANDARD (70" Inside Height)
- OTHER _____

HEADBOARD

- RE-USING HEADBOARD
- STAINLESS STEEL WRAP
- MAN DOOR
- CHAIN BOXES 1 OR 2 (Circle One)
- DUNNAGE RACKS 1 OR 2 (Circle One)
- UTILITY TRAY
- NOSE CONE WHITE OR BLACK (Circle One)
- INSIDE FLOOD LIGHTS
- ADDITIONAL HEADBOARD LIGHTS - 5 Total

TARP

- COLOR _____
- GRAPHICS

BACK FLAP

- ROPE & PULLEY
- CRANK ARM
- OVER 90° BARS
- VELCRO® WINGS

TENSIONING SYSTEM

- WINDING BRACE
- PNEUMATIC BRACE
- POST & RATCHET

ADDITIONAL NOTES

SIGNATURE _____

TITLE _____

FLATBED TRAILER ORDER FORM

Rev. 08-19

ShurTite™ tarps are custom-made to order and are non-returnable, so the correct physical measurements are essential for proper tarp fit. Be sure to provide all requested information or your order may be delayed. Do NOT use universal body or trailer sizes. Instead, use ACTUAL MEASUREMENTS provided in INCHES.

Use diagram below to help determine correct measurements for ordering. Trailer **MUST BE AIRED UP** and hooked to the truck or the fifth-wheel height set to 48" from the ground BEFORE taking measurements. Width of deck is from outside rub rail to outside rub rail. Additional information needed is noted on reverse side.

CONTACT INFORMATION

NAME _____

ADDRESS _____

EMAIL _____

CITY _____ STATE _____ ZIP _____

PHONE _____ FAX _____

TRAILER DIMENSIONS

A _____ FIFTH WHEEL

B _____ WIDTH

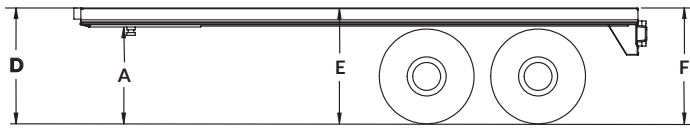
C _____ DECK LENGTH

D _____ FRONT HEIGHT

E _____ MID DECK HEIGHT

F _____ REAR HEIGHT

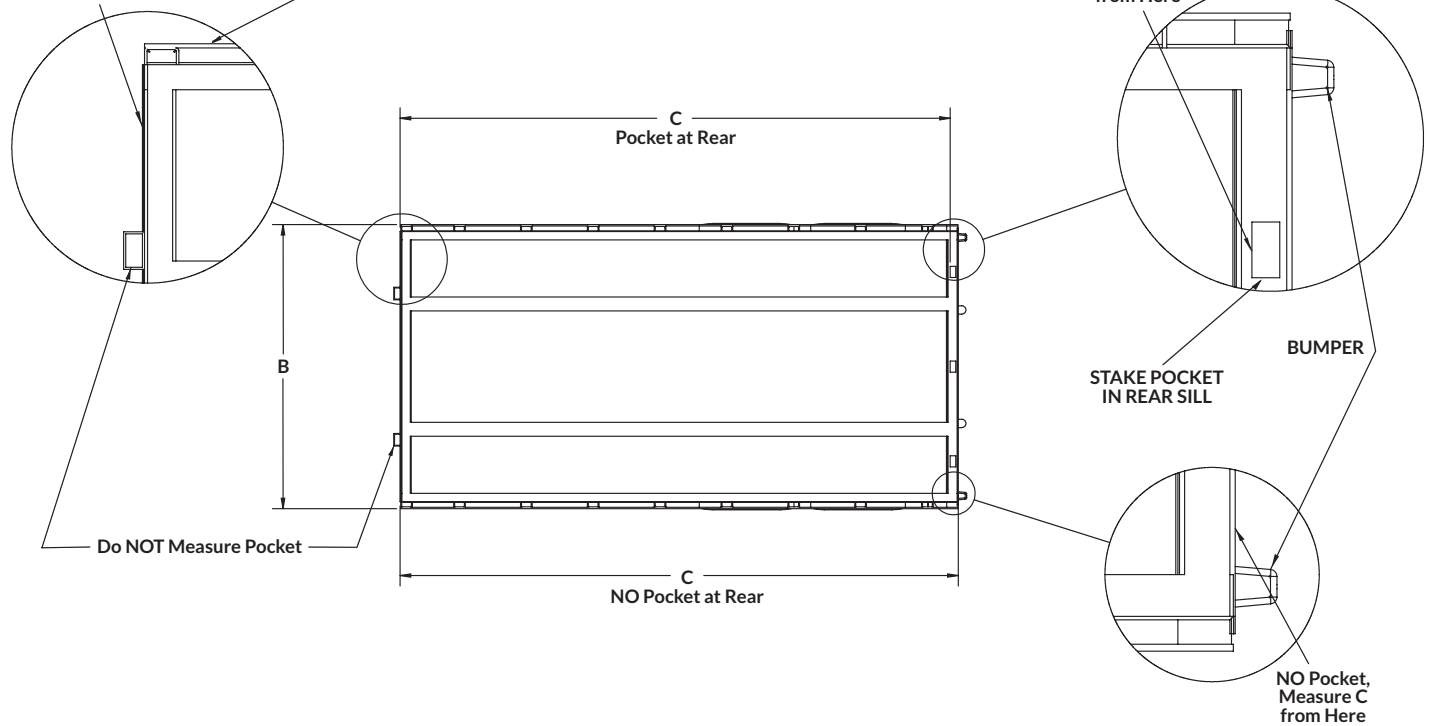
RUB RAIL STEEL ALUMINUM



Measure C from Here

Measure B from Here

With Pocket, Measure C from Here



I hereby certify that these measurements are accurate. I accept responsibility for any and all inaccurate measurements. I understand that I will be held financially responsible for any and all costs incurred with the production of my system based on these given measurements.

SIGNATURE _____

TITLE _____

FLATBED TRAILER ORDER FORM

TRACK: MAGNUM TITETRAX™

EXTRA OPTIONS

- EXTRA LIFTERS
- QUAD LIFTERS
- REAR STEP
 - PASSENGER SIDE STL OR AL (Circle One)
 - DRIVER SIDE STL OR AL (Circle One)
- FRONT BUILD-OUT - 8"
- FOLDING TRACK EXTENSION
- TRACK GUARD (Magnum ONLY)
- STAINLESS STEEL LIGHT BAR

TRAILER

- REUSING TRACK
 - LOWERING ADDITIONAL LIGHTS
 - EXCLUDES CORNER, MARKER & ABS
 - REMOVING OLD TARP SYSTEM
 - ADDITIONAL TRAILER WORK
-
-

SYSTEM HEIGHT

- 100" STANDARD (98" Inside Height)
- 84" STANDARD (82" Inside Height)
- 72" STANDARD (70" Inside Height)
- OTHER _____

ADDITIONAL NOTES

SIGNATURE _____

TITLE _____

HEADBOARD

- RE-USING HEADBOARD
- STAINLESS STEEL WRAP
- MAN DOOR
- CHAIN BOXES 1 OR 2 (Circle One)
- DUNNAGE RACKS 1 OR 2 (Circle One)
- UTILITY TRAY
- NOSE CONE WHITE OR BLACK (Circle One)
- INSIDE FLOOD LIGHTS
- ADDITIONAL HEADBOARD LIGHTS - 5 Total

TARP

- COLOR _____
- GRAPHICS

BACK FLAP

- ROPE & PULLEY
- CRANK ARM
- OVER 90° BARS
- VELCRO® WINGS
- GRAPHICS

TENSIONING SYSTEM

- WINDING BRACE
- PNEUMATIC BRACE
- POST & RATCHET

DROP DECK TRAILER ORDER FORM

Rev. 08-19

ShurTite™ tarps are custom-made to order and are non-returnable, so the correct physical measurements are essential for proper tarp fit. Be sure to provide all requested information or your order may be delayed. Do NOT use universal body or trailer sizes. Instead, use ACTUAL MEASUREMENTS provided in INCHES.

Use diagram below to help determine correct measurements for ordering. Trailer **MUST BE AIRED UP** and hooked to the truck or the fifth-wheel height set to 48" from the ground BEFORE taking measurements. Width of deck is from outside rub rail to outside rub rail. Additional information needed is noted on reverse side.

CONTACT INFORMATION

NAME _____

ADDRESS _____

EMAIL _____

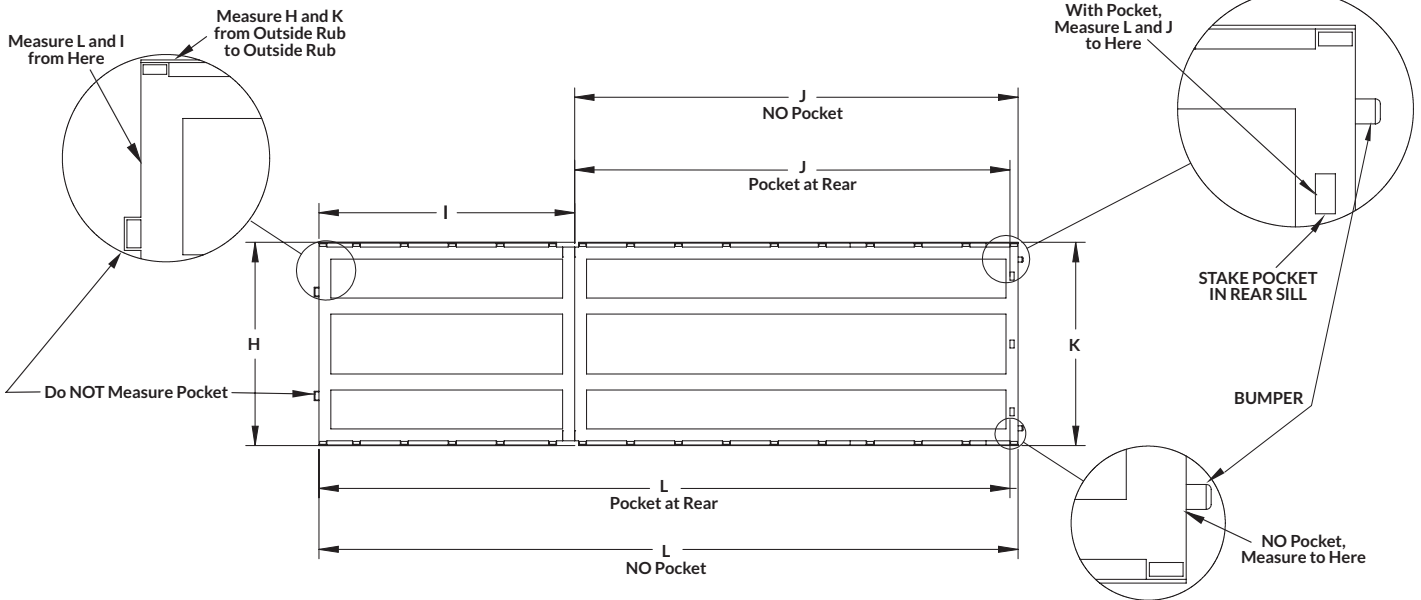
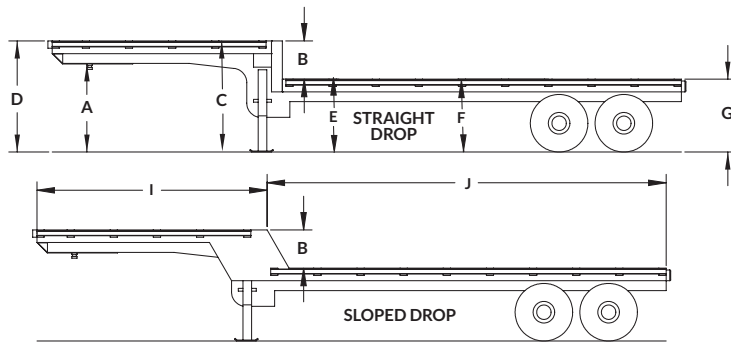
CITY _____ STATE _____ ZIP _____

PHONE _____ FAX _____

TRAILER DIMENSIONS

- A _____ FIFTH WHEEL
- B _____ DROP HEIGHT
- C _____ TOP DECK REAR HEIGHT
- D _____ TOP DECK FRONT HEIGHT
- E _____ LOWER DECK FRONT HEIGHT
- F _____ LOWER DECK MID HEIGHT
- G _____ LOWER DECK REAR HEIGHT
- H _____ UPPER DECK WIDTH
- I _____ UPPER DECK LENGTH
- J _____ LOWER DECK LENGTH
- K _____ LOWER DECK WIDTH
- L _____ TOTAL TRAILER LENGTH

RUB RAIL STEEL ALUMINUM



I hereby certify that these measurements are accurate. I accept responsibility for any and all inaccurate measurements. I understand that I will be held financially responsible for any and all costs incurred with the production of my system based on these given measurements.

SIGNATURE _____

TITLE _____

DROP DECK TRAILER ORDER FORM

TRACK: MAGNUM TITETRAX™

EXTRA OPTIONS

- EXTRA LIFTERS
- QUAD LIFTERS
- REAR STEP
 - PASSENGER SIDE STL OR AL (Circle One)
 - DRIVER SIDE STL OR AL (Circle One)
- FOLDING TRACK EXTENSION
- TRACK GUARD (Magnum ONLY)
- STAINLESS STEEL LIGHT BAR

TRAILER

- REUSING TRACK
- LOWERING ADDITIONAL LIGHTS
 - EXCLUDES CORNER, MARKER & ABS
- REMOVING OLD TARP SYSTEM
- ADDITIONAL TRAILER WORK
 - _____
 - _____
 - _____
 - _____

SYSTEM HEIGHT

- MAXIMUM HEIGHT _____
- REQUIRED HEIGHT _____
- OTHER _____

ADDITIONAL NOTES

SIGNATURE _____

TITLE _____

HEADBOARD

- RE-USING HEADBOARD
- STAINLESS STEEL WRAP
- MAN DOOR
- CHAIN BOXES 1 OR 2 (Circle One)
- DUNNAGE RACKS 1 OR 2 (Circle One)
- UTILITY TRAY
- NOSE CONE WHITE OR BLACK (Circle One)
- INSIDE FLOOD LIGHTS
- ADDITIONAL HEADBOARD LIGHTS - 5 Total

TARP

- COLOR _____
- GRAPHICS

BACK FLAP

- ROPE & PULLEY
- CRANK ARM
- OVER 90° BARS
- VELCRO® WINGS
- GRAPHICS

TENSIONING SYSTEM

- WINDING BRACE
- PNEUMATIC BRACE
- POST & RATCHET

DOUBLE DROP DECK TRAILER ORDER FORM

Rev. 08-19

ShurTite™ tarps are custom-made to order and are non-returnable, so the correct physical measurements are essential for proper tarp fit. Be sure to provide all requested information or your order may be delayed. Do NOT use universal body or trailer sizes. Instead, use ACTUAL MEASUREMENTS provided in INCHES.

Use diagram below to help determine correct measurements for ordering. Trailer **MUST BE AIRED UP** and hooked to the truck or the fifth-wheel height set to 48" from the ground BEFORE taking measurements. Width of deck is from outside rub rail to outside rub rail. Additional information needed is noted on reverse side.

CONTACT INFORMATION

NAME _____

ADDRESS _____

EMAIL _____

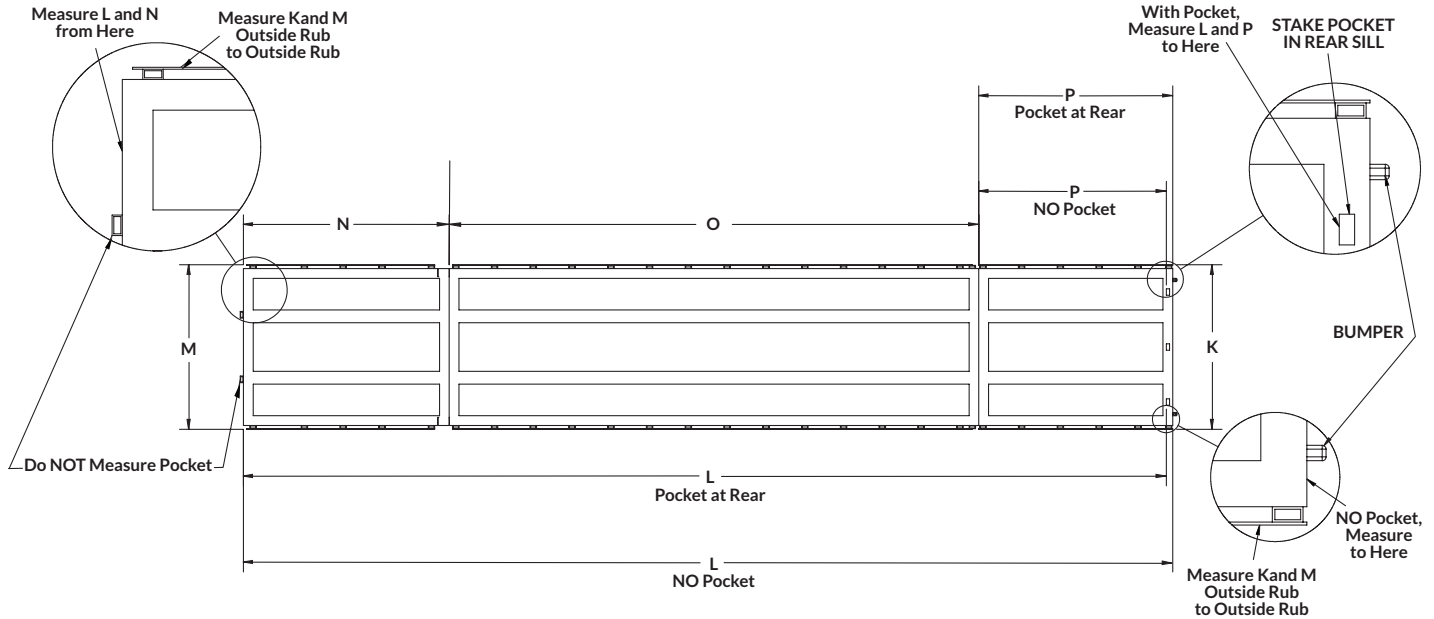
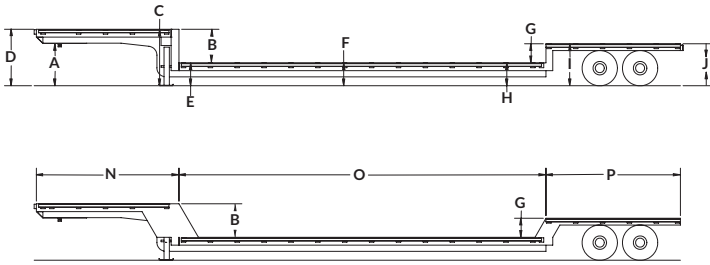
CITY _____ STATE _____ ZIP _____

PHONE _____ FAX _____

TRAILER DIMENSIONS

- A _____ FIFTH WHEEL
- B _____ DROP HEIGHT
- C _____ TOP DECK REAR HEIGHT
- D _____ TOP DECK FRONT HEIGHT
- E _____ LOWER DECK FRONT HEIGHT
- F _____ LOWER DECK MID HEIGHT
- G _____ REAR DECK DROP
- H _____ LOWER DECK REAR HEIGHT
- I _____ REAR DECK FRONT HEIGHT
- J _____ REAR DECK REAR HEIGHT
- K _____ REAR DECK WIDTH
- L _____ TOTAL TRAILER LENGTH
- M _____ FRONT DECK WIDTH
- N _____ FRONT DECK LENGTH
- O _____ MID DECK LENGTH
- P _____ REAR DECK LENGTH

RUB RAIL STEEL ALUMINUM



I hereby certify that these measurements are accurate. I accept responsibility for any and all inaccurate measurements. I understand that I will be held financially responsible for any and all costs incurred with the production of my system based on these given measurements.

SIGNATURE _____

TITLE _____

DOUBLE DROP DECK TRAILER ORDER FORM

Rev. 08-19 |

Page 2

TRACK: MAGNUM TITETRAX™

EXTRA OPTIONS

- EXTRA LIFTERS
- QUAD LIFTERS
- REAR STEP
 - PASSENGER SIDE STL OR AL (Circle One)
 - DRIVER SIDE STL OR AL (Circle One)
- FOLDING TRACK EXTENSION
- TRACK GUARD (Magnum ONLY)
- STAINLESS STEEL LIGHT BAR

TRAILER

- REUSING TRACK
 - LOWERING ADDITIONAL LIGHTS
 - EXCLUDES CORNER, MARKER & ABS
 - REMOVING OLD TARP SYSTEM
 - ADDITIONAL TRAILER WORK
- _____
- _____
- _____
- _____

SYSTEM HEIGHT

- MAXIMUM HEIGHT _____
- REQUIRED HEIGHT _____
- OTHER _____

ADDITIONAL NOTES

SIGNATURE _____

TITLE _____

HEADBOARD

- RE-USING HEADBOARD
- STAINLESS STEEL WRAP
- MAN DOOR
- CHAIN BOXES 1 OR 2 (Circle One)
- DUNNAGE RACKS 1 OR 2 (Circle One)
- UTILITY TRAY
- NOSE CONE WHITE OR BLACK (Circle One)
- INSIDE FLOOD LIGHTS
- ADDITIONAL HEADBOARD LIGHTS - 5 Total

TARP

- COLOR _____
- GRAPHICS

BACK FLAP

- ROPE & PULLEY
- CRANK ARM
- OVER 90° BARS
- VELCRO® WINGS
- GRAPHICS

TENSIONING SYSTEM

- WINDING BRACE
- PNEUMATIC BRACE
- POST & RATCHET

GEN3™ FLATBED TRAILER ORDER FORM

ShurTite™ tarps are custom-made to order and are non-returnable, so the correct physical measurements are essential for proper tarp fit. Be sure to provide all requested information or your order may be delayed. Do NOT use universal body or trailer sizes. Instead, use ACTUAL MEASUREMENTS provided in INCHES.

Use diagram below to help determine correct measurements for ordering. Trailer **MUST BE AIRED UP** and hooked to the truck or the fifth-wheel height set to 48" from the ground BEFORE taking measurements. Width of deck is from outside rub rail to outside rub rail. Additional information needed is noted on reverse side.

CONTACT INFORMATION

NAME _____

ADDRESS _____

EMAIL _____

CITY _____ STATE _____ ZIP _____

PHONE _____ FAX _____

TRAILER DIMENSIONS

A _____ FIFTH WHEEL

B _____ WIDTH

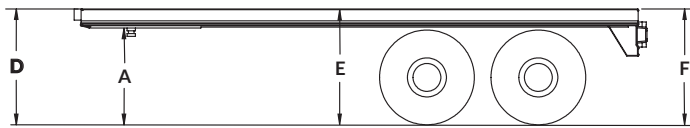
C _____ DECK LENGTH

D _____ FRONT HEIGHT

E _____ MID DECK HEIGHT

F _____ REAR HEIGHT

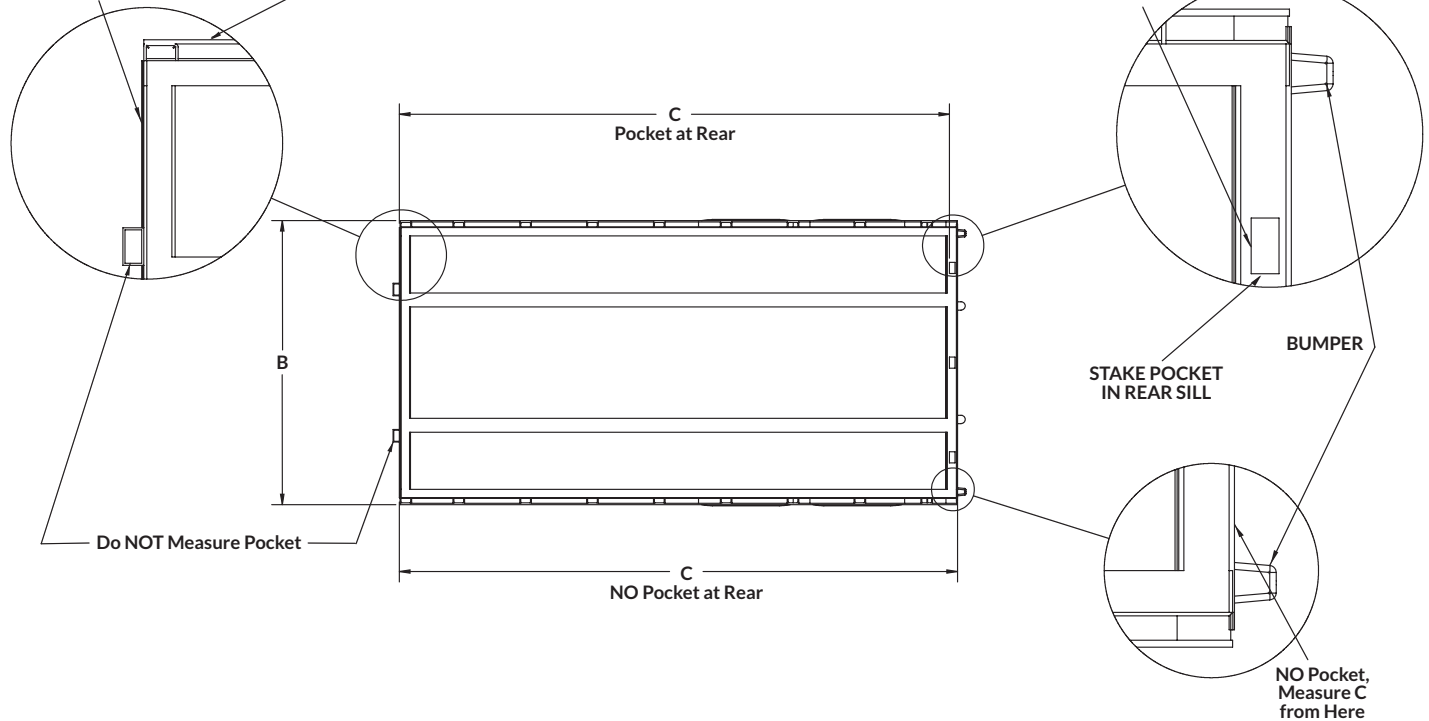
RUB RAIL STEEL ALUMINUM



Measure C from Here

Measure B from Here

With Pocket, Measure C from Here



I hereby certify that these measurements are accurate. I accept responsibility for any and all inaccurate measurements. I understand that I will be held financially responsible for any and all costs incurred with the production of my system based on these given measurements.

SIGNATURE _____

TITLE _____

EXTRA OPTIONS

- EXTRA LIFTERS
- QUAD LIFTERS
- REAR STEP
 - PASSENGER SIDE STL OR AL (Circle One)
 - DRIVER SIDE STL OR AL (Circle One)
- FRONT BUILD-OUT - 8"
- FOLDING TRACK EXTENSION
- STAINLESS STEEL LIGHT BAR

TRAILER

- LOWERING ADDITIONAL LIGHTS
 - EXCLUDES CORNER, MARKER & ABS
 - REMOVING OLD TARP SYSTEM
 - ADDITIONAL TRAILER WORK
-
-
-

SYSTEM HEIGHT

- 100" STANDARD (98" Inside Height)
- 84" STANDARD (82" Inside Height)
- 72" STANDARD (70" Inside Height)
- OTHER _____

ADDITIONAL NOTES

HEADBOARD

- STAINLESS STEEL WRAP
- MAN DOOR
- CHAIN BOXES 1 OR 2 (Circle One)
- DUNNAGE RACKS 1 OR 2 (Circle One)
- UTILITY TRAY
- NOSE CONE WHITE OR BLACK (Circle One)
- INSIDE FLOOD LIGHTS
- ADDITIONAL HEADBOARD LIGHTS - 5 Total

TARP

- COLOR _____
- GRAPHICS

BACK FLAP

- ROPE & PULLEY
- CRANK ARM
- OVER 90° BARS
- VELCRO® WINGS
- GRAPHICS

ELECTRIC FRONT

- WIRED DIRECT
- BATTERY & SOLAR PANEL
- BATTERY & TRICKLE CHARGER

SIGNATURE _____

TITLE _____

SUGGESTED INSTALLATION TOOL LIST

1. Aluminum Welder and/or Steel Welder (dependent on trailer make/model)
2. Circular/Skill Saw (to cut aluminum)
3. Hand Drill: 1/2" Chuck (3/8" chuck – 1/2" drill shank must fit)
4. Grinder: Aluminum and/or Steel
5. Plasma Cutter (not an absolute necessity, but it helps)
6. Wire Brush (to clean welds)
7. Utility Knife (to cut track rubber)
8. Black Marker
9. Sliding Bar Clamps: 8-10 Pcs.
(or 10-12 heavy vise grip locking pliers to mount track)
10. Impact Gun: 3/8" or 1/2" Drive (same as sockets)
11. Adjustable T-Square (to weld track tabs perpendicular to deck)
12. Carpenter Square or Level: 2' (to set headboard angle)
13. Measuring Tape
14. Hammer (to install tarp anchors)
15. Heavy Vise Grip w/Swivel Pads or C-Clamp (to install tarp anchors)
16. Caulk Gun (to seal headboard)
17. Pry Bar: 24" (to install tarp anchors)
18. Counter Sink: 1" 82° (for track bolts)
19. Rivet Gun: 3/16"
20. Pliers (to install tarp anchors)
21. Wire Strippers (to install headboard lights)
22. Side Cutters (to install headboard light wiring, cut straw for tarp anchor)
23. Hole Saw: 3" (to cut wheel access hole in track)
24. Hole Saw: 2-3/4" (to cut holes for any size trailer lights, front or rear)
25. Socket: 3/4"
26. Wrench: 3/4"
27. Wrench: 1/2" (to install rope and pulley over 90 bar latch)
28. Hex Key Socket: 7/32" – 3/8" track bolt (for steel trailer)
29. Hex Key Socket: 5/16" – 1/2" track bolt (for aluminum trailer)
30. Wrench: 9/16"
31. Socket: 9/16"
32. Drill Bit: 1/2"
33. Drill Bit: 3/8"
34. Screwdriver: Robertston #3 Black (to lock brace guide)
36. Drill Bit: 1/4" (to drill hole for tether)
37. Drill Bit: 13/64" (to install rivets)
38. Diagonal Brace: 2 Pieces, Minimum 8' Length – wood 2x4, steel angle, aluminum angle (for headboard mounting angle)
39. Floor Jack (to mount track – not an absolute necessity, but it helps)
40. Some Method of Bending Small Pieces of Aluminum or Steel

TRADITIONAL FLATBED TARPS

Order our in-stock steel and lumber tarps for convenience and fast delivery – available when time is of the essence but you don't want to pay for a custom tarp.

Standard features of our in-stock steel tarps are reinforced D-rings, hem with D-rings (no folds) and black web. D-rings are carefully positioned between the heavy-duty poly webbing and vinyl-coated tarp fabric, then Z-stitched into place for added strength and durability.

Standard features of our in-stock lumber tarps are a universal 9-foot wide flap, vertical row D-rings, black web and grab handles that are double stitched to prevent pullout. All D-rings and grommets are placed 24 inches on center.

In addition to our in-stock part numbered flatbed tarps, we can build custom flatbed tarps for whatever you are hauling. Our technical team and experienced tarp fabrication team can build whatever you want to your specification. From custom colors to custom drops and d-ring configurations, if you need it covered...we can build you a tarp. *(Custom tarps require a minimum purchase quantity of 10 tarps and standard lead times do not apply. Call for quote.)*



CARGO CONTROL

Our safe and secure tie-down lineup gives you everything you need to get the job done safely!



LOAD BINDERS

RUBBER STRAPS

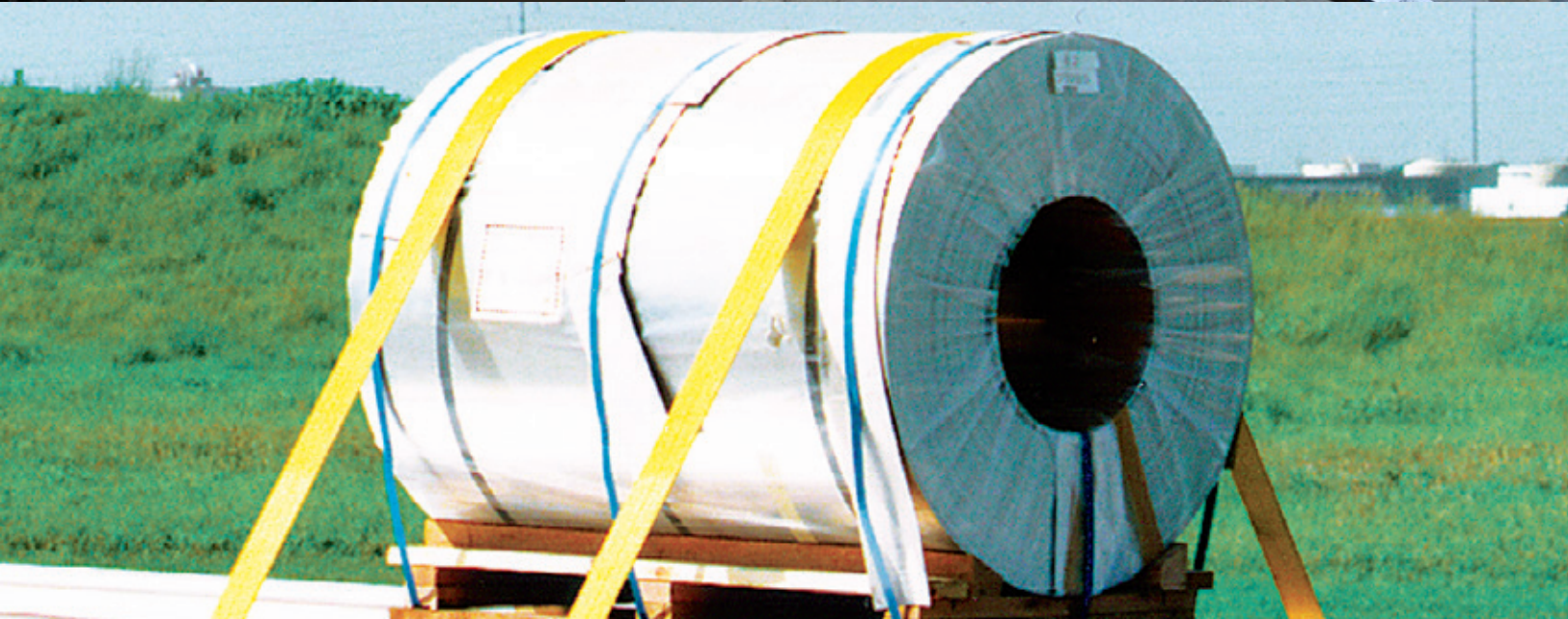
TRANSPORT CHAINS

WINCH STRAPS

LOAD PROTECTORS

WINCHES

SAFETY SIGNS/FLAGS



TERMS AND CONDITIONS

ORDERS

All orders are subject to written acceptance by Shur-Co® of Canada, ULC, 490 Elgin Street, Unit #2, Brantford, ON N3S 7P8. We are required by law to collect sales tax and FET taxes on products shipped to states where applicable. If tax exempt, a copy of your tax exempt certificate must accompany your order.

EXPEDITE/CANCELLATION/CHANGE FEES

In-stock parts orders placed by 10:00 a.m. (Central Time) normally ship the same day. (This varies with quantity/size of the order.) Standard lead time on tarps and hardware kits is generally five (5) to seven (7) working days; however, if you request that your order of tarps, hardware kits and/or complete tarp systems be expedited earlier than the normal lead time, there will be an extra charge of \$25. This fee is in addition to shipping and handling charges. Any change will generate an additional charge of \$25, and a cancellation will generate a 15% re-stocking fee. Lastly, once an order is in production, no changes can be made – it is then considered final. **Remember – we have no control over delivery dates – only ship dates.**

SHIPPING

All orders are shipped FOB from Shur-Co®, LLC, Yankton, SD; Caldwell, ID; Fort Dodge, IA; Decatur, IL; Ravenna, OH; West Fargo, ND; Brantford, Ontario, Canada. No full freight will be allowed and no pre-paid shipment will be accepted unless quoted and approved in writing prior to acceptance of order. All shipments are made by the most reasonable means in accordance with size and weight of order, unless specific routing instructions are furnished by customer. Shipments are made daily via UPS and common carrier. Claims for shortages must be made within 10 days. All claims for damages or loss in transit must be made with the carrier. No collect calls will be accepted. To ensure delivery of orders, we need your full street address and phone number. When you receive your shipment, examine it carefully. Be sure that all cartons listed on the delivery sheet are present and accounted for. Large items, like steel tubing, may be packaged separately. If a carton is damaged, open it and inspect contents before signing for delivery. If merchandise is damaged, describe damage on delivery receipt. Failure on your part to document damaged or missing merchandise on delivery receipt re-leases carrier of liability; repair or replacement will be the customer's responsibility.

CREDIT TERMS

Shipments are made on a cash basis – no CODs. We accept VISA, MasterCard, wire (electronic) transfer and checks by mail. If paying by mail, orders will not ship until the check is in the bank.

WARRANTY

We warrant that all new products are free from defects in materials and workmanship.* Warranty is effective if products are properly installed and used for the purpose for which they were intended and applies to the original buyer only. Except as set forth above or as set forth in any product-specific warranty documentation, we make no other warranties

WARRANTY Continued

express or implied, including, but not limited to, warranties of merchant-ability or fitness for a particular use.

Returns for warranty must be accompanied by a Return Merchandise Authorization number (RMA#), obtained by calling Customer Service at 800.265.0823, and sent, with freight paid by us, to Shur-Co® of Canada, ULC, 490 Elgin Street, Unit #2, Brantford, ON N3S 7P8. All products returned without an RMA# will be refused. When we issue the RMA#, we will also issue a call tag to have UPS (or other freight company) pick up the product. COD warranty returns will not be accepted. We will pay no storage charges for a warranty product return prior to pickup by us or the freight company. If a warranty product return is scheduled to be picked up by us, we will do so at our earliest convenience.

If the product returned is found, in our judgment, to be defective in material or workmanship, our obligation under this warranty is limited to repair or replacement of the product, which will be made by us. Re-pair or replacement will be at our discretion, with replacements being made using current products performing the equivalent function. Labor charges other than those incurred at our factory or company-owned service location (see back cover for list of facilities), including, but not limited to, any labor to install a repaired or replacement product, are not covered under this warranty. All expenses associated with delivering defective products to our factory and delivering repaired or replacement products from our factory to the owner will be paid by us.

If the product returned is found, in our judgment, to be non-warrantable, the owner will be contacted to authorize repair, the purchase of a replacement product or return of the product, all of which will be at the owner's expense. Payment authorization must be received by us before any non-warrantable product is repaired, replaced or returned. All expenses associated with delivering the repaired non-warrantable product, a replacement product or the non-warrantable product from our factory to the owner will be paid by the owner.

In no event will we be liable for damages of any kind to person, product or property, including, but not limited to, indirect, incidental, special, consequential or punitive damages, or damages for loss of profits or revenue, even if we have been advised of the possibility of such damages. There are no warranties for used products or products that have been repaired, altered, modified or subjected to misuse, negligence or accident. We will not repair or replace products that fail or malfunction due to ordinary wear and tear, except as expressly provided in a product-specific warranty. The use of non-Shur-Co®, LLC parts in conjunction with our products will void the product warranty.

*Certain products have specific warranties that differ from this warranty, i.e. motors and electronics. Product-specific warranty documentation is available. In the event of a conflict between this warranty and a product-specific one, the product-specific warranty will govern. SEE A COMPLETE LISTING OF SHUR-CO®, LLC WARRANTIES ON OUR WEBSITE: <https://www.shurco.com/support/warranties>.

RETURN POLICY

All sales are final. See WARRANTY section at left and above for information on warranty returns.

NOTE: No person is authorized to modify the foregoing conditions of sale whatsoever. All prices, product listings, sizes, weights and manufacturing details in this catalog are subject to change without notice.

ShurTite™ Service Centers

SHUR-CO® of CANADA

490 Elgin St., Unit #2
Brantford, ON N3X7P8
800.265.0823
FAX: 519.751.3997

SHUR-CO® of SIOUX FALLS, SD

47184 258th St., Suite B
844.573.9322
FAX: 605.543.5469

SHUR-CO® of ILLINOIS

3993 E. Mueller Ave., Decatur
866.356.0246
FAX: 217.877.827

SHUR-CO® of NORTH DAKOTA

1746 4th Ave. NW, Fargo
877.868.4488
FAX: 701.277.1283

SHUR-CO® of OHIO

4676 Lynn Rd., Rootstown
866.356.0242
FAX: 330.297.5599

SHUR-CO® of IDAHO

921 Garber St., Caldwell
208.455.1046

Additional Shur-Co® Locations

Corporate Offices/Outlet Store

SHUR-CO® of SOUTH DAKOTA

2309 Shur-Lok St., Yankton
800.474.8756
FAX: 605.665.0501

SHUR-CO® of FLORIDA

3353 SE Gran Park Way, Stuart
800.327.8287
FAX: 772.287.0431

SHUR-CO® of IOWA

3839 Midway Blvd., Fort Dodge
866.356.0245
FAX: 515.576.5578

SHUR-CO® of MICHIGAN

121 E Sanborn Ave., Crosswell
800.327.8287
FAX: 772.287.0431

SHUR-CO® UK Limited

Rochester Airport Est., Unit 8
27-43 Laker Rd.
Rochester, Kent ME1 3EZ

Contact us to find the
Authorized Shur-Co® Dealer
nearest you!



JOIN US ON OUR SOCIAL NETWORK!

www.shurtite.com