



TARP SYSTEMS, PARTS & TARPS

P/N 1128261 Rev. A

OWNER'S MANUAL

Spring Trap 2™

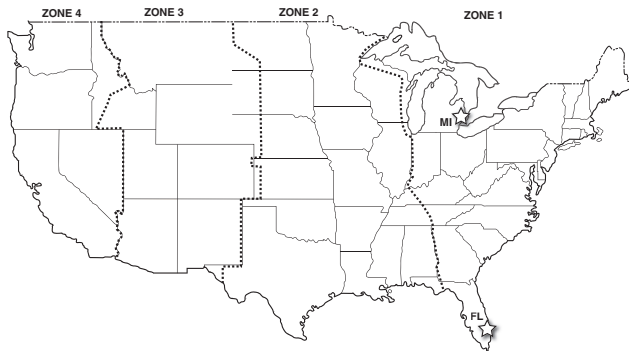
READ BEFORE INSTALLING

3353 GRAN PARK WAY • STUART, FL 34997
PHONE: 1-800-327-8287 • FAX: 1-772-287-0431
www.DONOVAN-TARPS.com

PREPAID FREIGHT POLICY. Shur-Co®, LLC will prepay freight on eligible orders* of Florida-manufactured Donovan® products and tarp items shipped from our Florida branch that meet the dollar requirements for the shipping destinations specified below.

*Valid within the continental 48 states only. Applies to products purchased at standard pricing; any special pricing will void standard prepaid freight policy and will be addressed on a case-by-case basis. Does NOT apply to complete Waste systems or ShurTite™ flatbed products. To see a list of eligible products consult the Index of the Donovan® Tarp Systems catalog.

INTO FL: Freight prepaid on orders of \$2,500 or more or tarp-only orders of \$1,500 or more. INTO ZONES 1 & 2: Freight prepaid on orders of \$3,000 or more or tarp-only orders of \$2,500 or more. INTO ZONES 3 & 4: Freight prepaid on orders of \$6,000 or more or tarp-only orders of \$3,000 or more.



WARRANTY. We warrant all new products are free of defects in materials and workmanship.* This warranty is effective if products are properly installed and used for the purpose for which they were intended and applies to the original buyer only. Except as set forth above or in any product-specific warranty documentation, we make no other warranties, express or implied, including but not limited to warranties of merchantability of fitness for a particular use.

Returns of a product for warranty must be accompanied by a Return Merchandise Authorization number (RMA#), obtained by calling Customer Service at 800-327-8287, and sent, freight paid by us, to Donovan, 3353 SE Gran Park Way, Stuart, FL 34997. All products returned without an RMA# will be refused. When we issue the RMA#, we will also issue a call tag to have U.P.S. (or other freight company) pick up the product. C.O.D. returns not accepted.

We will pay no storage fees for a warranty product return prior to pick up by us or the freight company. If a warranty product return is scheduled to be picked up by us, we will pick up the product at our earliest convenience. If a product returned is found, in our judgement, to be defective in material or workmanship, our obligation under this warranty is limited to the repair or replacement of the product, which will be made by us. Repair or replacement will be at our discretion, with replacements being made using current products performing in the equivalent function. Labor charges, other than those incurred at our factory, including, but not limited to, any labor to install a repaired or replacement product, are not covered under this warranty. All expenses associated with delivering defective products to our factory and delivering repaired or replacement products from our factory to the owner will be paid by us.

If the product returned is found, in our judgement, to be non-warrantable, the owner will be contacted to authorize repair work, purchase of a replacement product or return of the product, all of which will be at the owner's expense. Payment authorization must be received by us before any non-warrantable product is repaired, replaced or returned. All expenses associated with delivering the repaired non-warrantable product, a replacement product or the non-warrantable product from our factory to the owner will be paid by the owner.

In no event will we be liable for any damages of any kind to person, product or property, including but not limited to indirect, incidental, special, consequential or punitive damages, or damages for loss of profits or revenue, even if we have been advised of the possibility of such damages. There are no warranties for used products or products that have been repaired, altered, modified or subjected to misuse, negligence or accident. We will not repair or replace products that fail or malfunction due to ordinary wear and tear, except as expressly noted in a product-specific warranty. Use of non-Shur-Co®, LLC parts in conjunction with Shur-Co®, LLC products will void this product warranty.

*Certain products have specific warranties that differ from this warranty, for example motors and electronics. Product-specific warranty documentation is available for these items. In the event of a conflict between this warranty and a product-specific warranty, the product-specific warranty will govern.

RETURN POLICY. All sales final. See WARRANTY above for return details.

OTHER. All prices, product listings, sizes, weights and manufacturing details are subject to change without notice. No person is authorized to modify the foregoing conditions of sale whatsoever.

SHUR-CO®, LLC SERVICE AND DISTRIBUTION CENTERS

Corporate HQ
SHUR-CO® of SOUTH DAKOTA
 2309 Shur-Lok St., Yankton, SD 57078
 Ph 800.474.8756 | Fax 605.665.0501

SHUR-CO® of IDAHO
 610 N. 16th Ave., Caldwell, ID 83607
 Ph 866.356.0246 | Fax 217.877.8270

SHUR-CO® of ILLINOIS
 3993 E. Mueller Ave., Decatur, IL 62526
 Ph 866.356.0246 | Fax 217.877.8270

Preferred Donovan® Brand Seller
SHUR-CO® of FLORIDA
 3353 SE Gran Park Way, Stuart, FL 34997
 Ph 800.327.8287 | Fax 772.287.0431

SHUR-CO® of NORTH DAKOTA
 1746 4th Ave. NW, West Fargo, ND 58078
 Ph 877.868.4488 | Fax 701.277.1283

SHUR-CO® of OHIO
 4676 Lynn Rd.
 Rootstown, OH 44266
 Ph 866.356.0242 | Fax 330.297.5599

SHUR-CO® of VERMILLION
 1212 N. Norbeck St., Vermillion, SD
 Ph 605.658.1020 | Fax 605.658.1022

SHUR-CO® of CANADA
 490 Elgin St., Unit #1
 Brantford, Ontario N3S 7P8
 Ph 800.265.0823 | Fax 519.751.3997

SHUR-CO® UK, Ltd.
 Unit 41 Rochester Airport Estates
 Laker Rd., Rochester, Kent ME1 3QX
 Ph +44 (0)1795.473499
 Fax +44 (0)871.272.8278

For more information, log on to our website:

www.donovan-tarps.com

MESSAGE TO OWNERS

Thank you for buying this tarping system from Donovan® Tarps. We appreciate your confidence in our products. Please read and thoroughly understand this manual before installing and/or operating this system.

Pay particular attention to important safety and operating instructions, as well as warnings and cautions. The hazard symbol **▲** is used to alert users to potentially hazardous conditions and is followed by caution, warning or danger messages.

Failure to READ AND FOLLOW INSTRUCTIONS could result in failure of your tarping system and/or personal injury. Your trailer requirements may, however, call for minor variations to these instructions.

Please inspect your tarping system periodically. Repair or replace worn or damaged parts to your system.

QUESTIONS? CALL OUR HELP LINE:

1-866-748-7435

MON-FRI 8 AM-5 PM CENTRAL TIME

SAFETY

We at Donovan® Tarps are concerned with your safety and the safety of all those operating this system. Therefore, we have provided safety decals at various locations on your tarping system. Keep decals as clean as possible at all times. Replace any decal that has become worn or damaged, painted over or otherwise difficult to read. Replacement decals are available through Donovan® Tarps dealers.

SAFETY INSTRUCTIONS

- 1. Always wear safety glasses during installation and operation.**
- 2. Stay clear of moving parts.**
- 3. No other use of this system is authorized, except as designed.**

RUST PREVENTION

To prevent rust, paint all exposed metal, such as weld seams and/or metal exposed by grinding or cutting, with corrosion-resistant paint.

TABLE OF CONTENTS

Hardware Identification 4

Pivot Mount Installation 5

Elbow Assembly 6

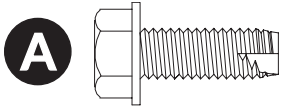
Crossbar Assembly 7

Operation and Maintenance 8

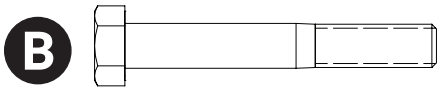
Replacement Parts 9

TOOLS REQUIRED

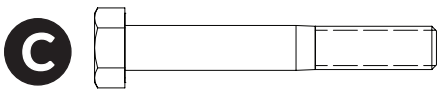
- 1. Wrench Set
- 2. Ratcheting Socket Wrench
- 3. Socket Set
- 4. Hammer
- 5. Tape Measure
- 6. Drill
- 7. Grinder
- 8. Pliers
- 9. Metal Saw



A 1705924 - Self-Tapping Screw - 3/8" x 1" - Black Zinc



B 1202899 - Hex Cap Screw - 5/16" x 2-1/4"



C 1705923 - Hex Cap Screw - 5/16" x 2-1/4" - Black Zinc



D 1705914 - Hex Cap Screw - 1/2" x 3-1/2" - Black Zinc



E 1700419 Nylon Lock Nut - 5/16"



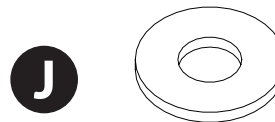
F 1705919 - Nylon Lock Nut - 5/16" - Black Zinc



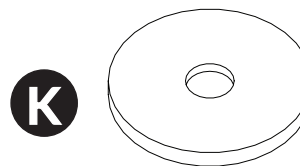
G 1705918 - Nylon Lock Nut - 3/8" - Black Zinc



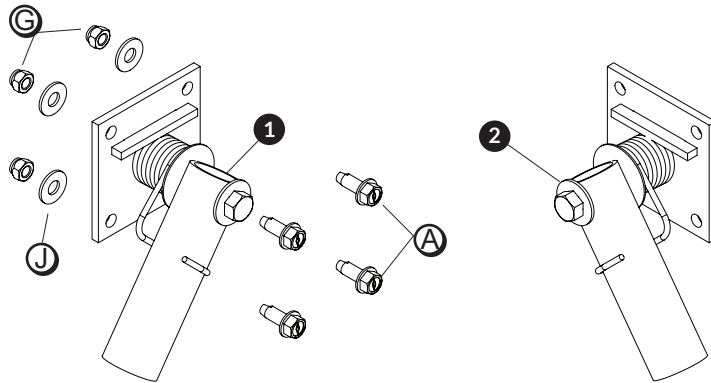
H 1700428 - Flat Washer - 5/16"



J 1700429 - Flat Washer - 3/8"

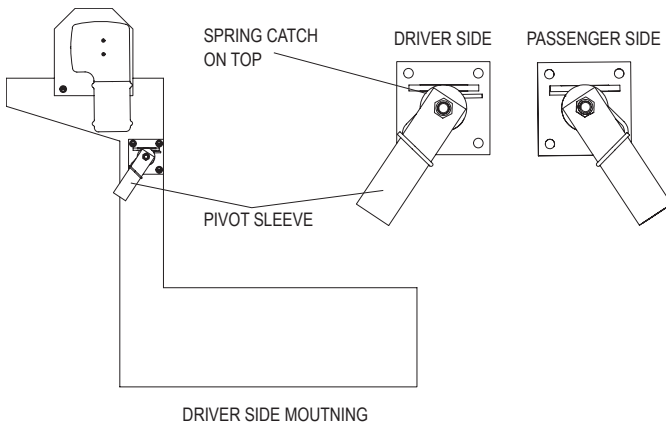


K 1706097 - Fender Washer - 1/2"

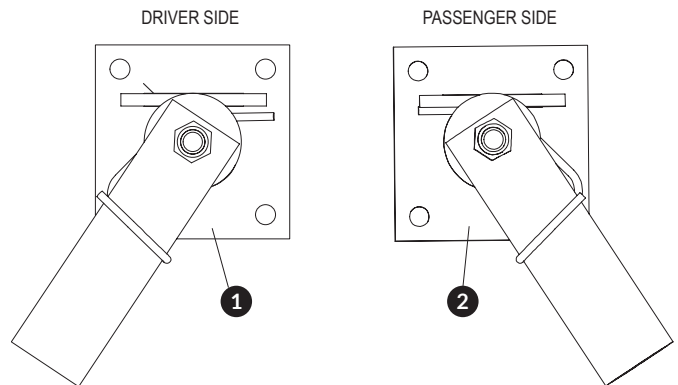


Item	Part #	Description
1.	1128254	Pivot Assembly LH Spring Trap 2™
2.	1128255	Pivot Assembly RH Spring Trap 2™
A.	1705924	Self-Tapping Screw - 3/8" x 1" - Black Zinc
G.	1705918	Nylon Lock Nut - 3/8" - Black Zinc
J.	1700429	Flat Washer - 3/8"

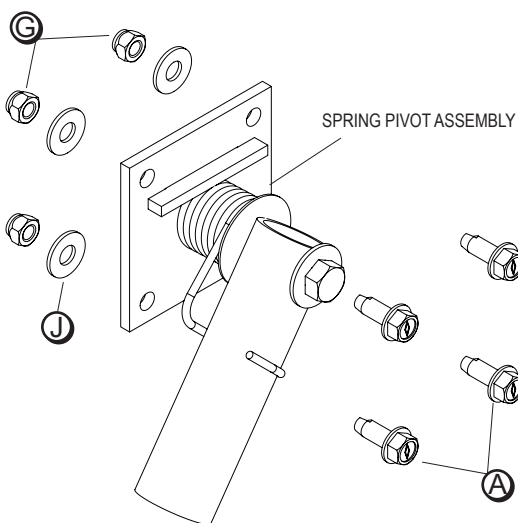
STEP 1: Spring pivot assemblies should be mounted approximately half way between top rail and top of direct drive motor. Left hand (driver side) assembly ① can be welded or mounted using the 3/8" cap screws A and associated washers J and lock nuts G, if needed.

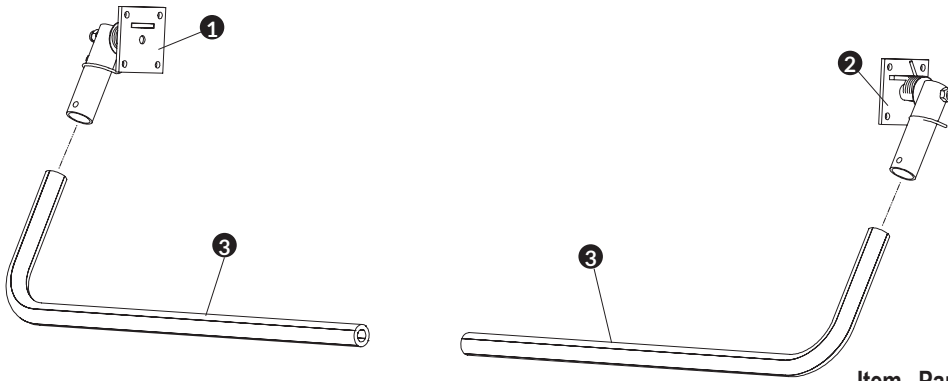


STEP 2: Note location of pivot sleeve in unloaded position.



STEP 3: Repeat steps 1 & 2 for right hand (passenger side) pivot assembly ②. Mount at same height as driver side.





Item	Part #	Description
1.	1128254	Pivot Assembly LH Spring Trap 2™
2.	1128255	Pivot Assembly RH Spring Trap 2™
3.	1128628	Elbow

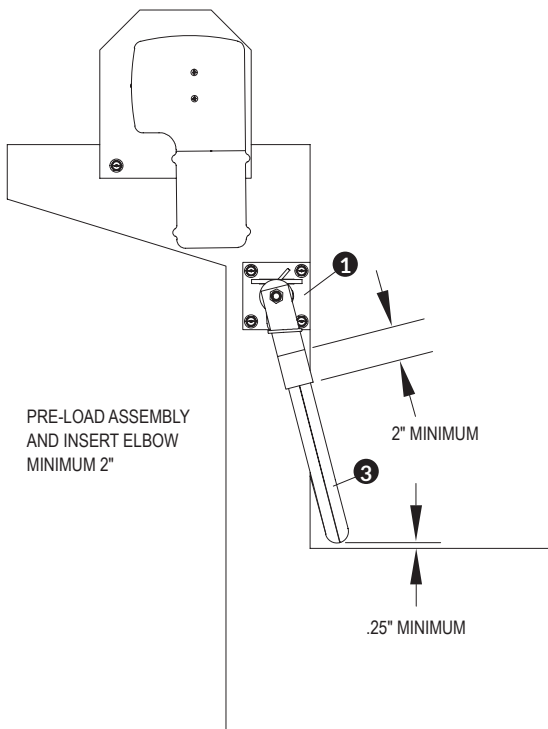
STEP 1: Apply load to spring pivot assembly by pulling it counter clockwise towards rear of box.

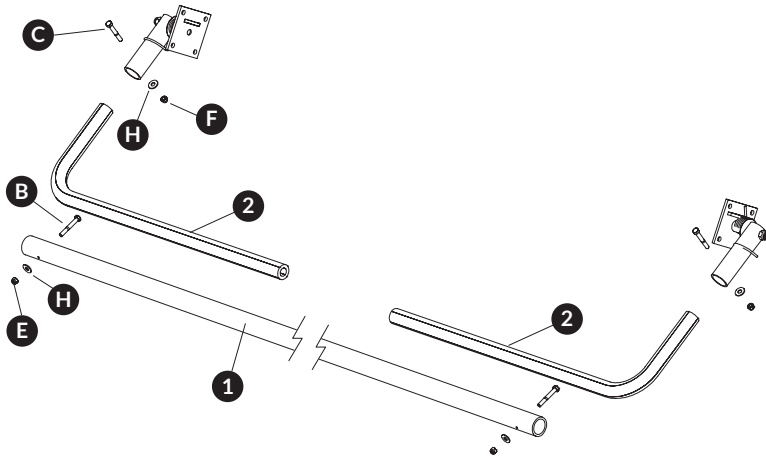
STEP 2: Insert short end of elbow ③ into the driver's side pivot assembly ①.

STEP 3: Adjust length of elbow until it rests just above top rail of box as shown below.

STEP 4: Mark location where elbow exits bottom of the pivot sleeve, remove and add 4" to mark, then cut to length.

STEP 5: Trim passenger side elbow to same length as driver side elbow.





Item	Part #	Description
1	1706186	Aluminum Crossbar
2	1128628	Elbow
3	1128254	Pivot Assembly LH Spring Trap 2™
4	1128255	Pivot Assembly RH Spring Trap 2™
B	1202899	Hex Cap Screw - 5/16" x 2-1/4"
C	1705923	Hex Cap Screw - 5/16" x 2-1/4" - Black Zinc
F	1705919	Nylon Lock Nut - 5/16" - Black Zinc
H	1700428	Flat Washer - 5/16"

STEP 1: Lay cross bar ① on top of tarp (with tarp in covered position).

STEP 2: Insert long ends of both elbows into cross bar.

STEP 3: Insert elbows into spring pivot sleeves.

STEP 4: For narrow boxes, cross bar may need to be cut down to width.

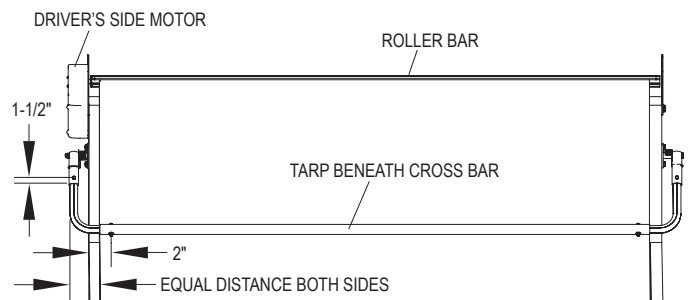
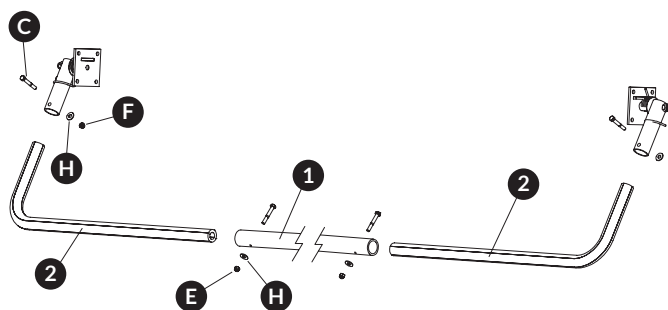
STEP 5: Adjust cross bar so it is centered between pivot assemblies.

STEP 6: Line up grooves in cross bar and elbows as a drilling guide. Drill 5/16" hole through each end of cross bar approximately 2" in from each end.

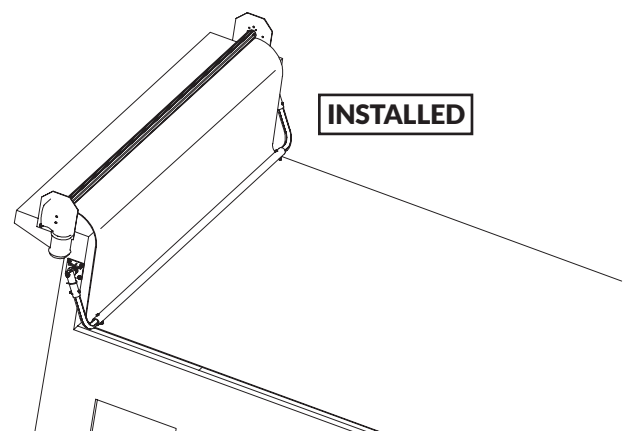
STEP 7: Secure with fasteners using cap screws ③, washers ④, and lock nuts ⑤.

STEP 8: Drill a 5/16" hole through each pivot sleeve and elbow approximately 1-1/2" from bottom of each sleeve.

STEP 9: Secure with fasteners using cap screws ⑥, washers ⑦, and lock nuts ⑧.



NOTE: When installing Elbow, ensure that a minimum of 2" inserts into Spring Pivot. If this cannot be achieved with short end of Elbow, Elbow may be flipped so that long end is inserted into Spring Pivot. If Elbow is flipped, it may be necessary to cut long end down so that it meets minimum dimensions shown. Short end would then insert into Crossbar.



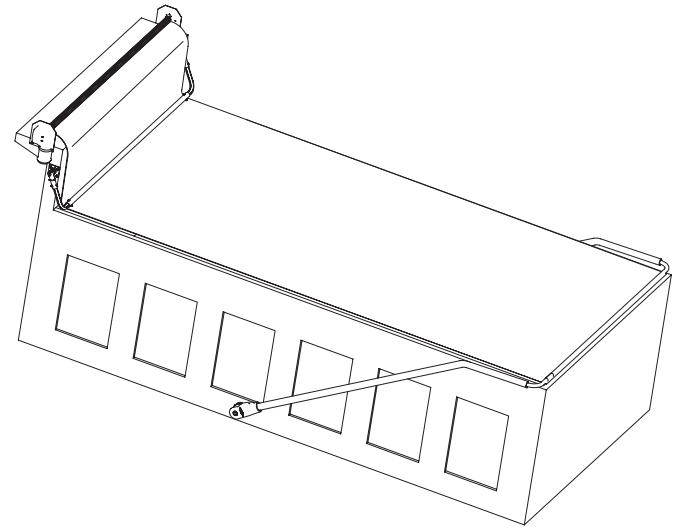
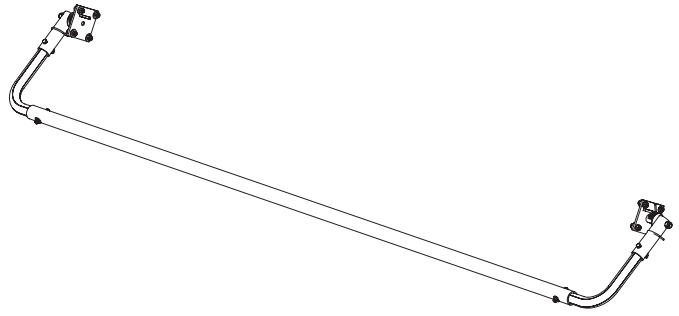
⚠ CAUTION

Before operating this or any tarper, check your surroundings for any overhead power lines tree limbs or other obstruction in path of tarper travel from open to close and back.

⚠ CAUTION

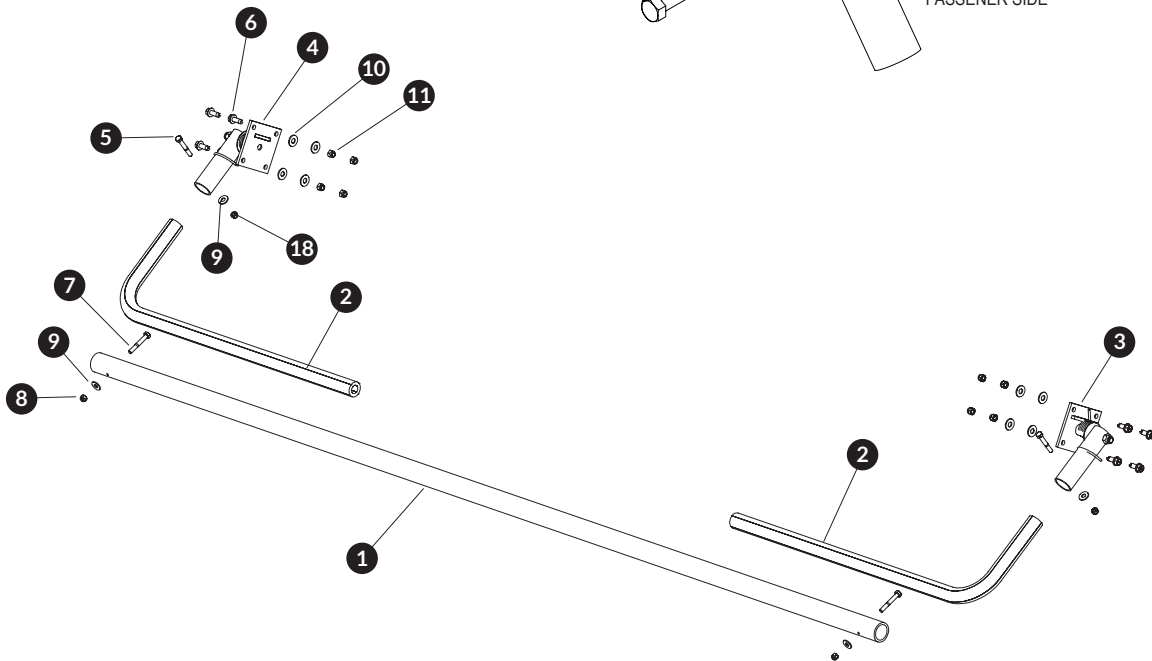
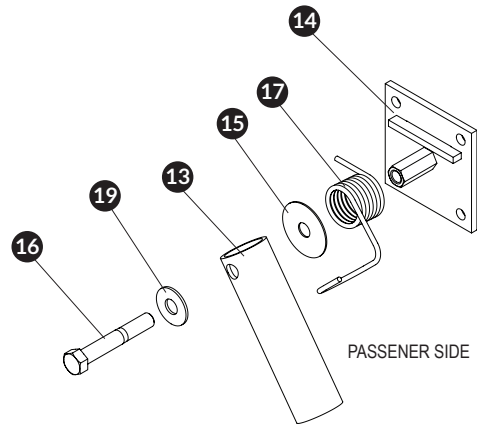
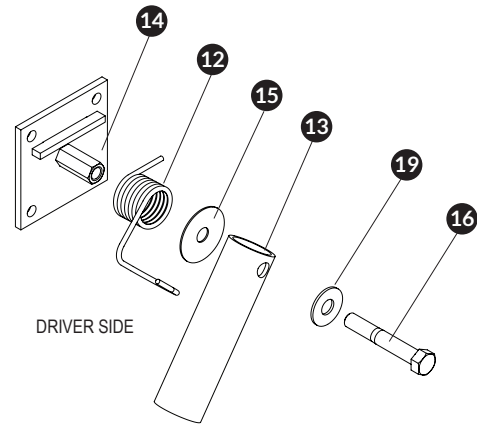
Before servicing or repairing Spring Trap 2™ system, disconnect power to components from vehicles battery or other power source.

NOTE: Noise level is less than 72 dB(A).



SPRING TRAP 2™

Item	Part #	Description
1	1706186	Aluminum Cross Bar
2	1128628	Elbow
3	1128255	Pivot Assembly RH
4	1128254	Pivot Assembly LH
5	1705923	Hex Cap Screw - 5/16" x 2-1/4" - Black Zinc
6	1705924	Self-Tapping Screw - 3/8" x 1" - Black Zinc
7	1202899	Hex Cap Screw - 5/16" x 2-1/4"
8	1700419	Nylon Lock Nut - 5/16"
9	1700428	Flat Washer - 5/16"
10	1700429	Flat Washer - 3/8"
11	1705918	Nylon Lock Nut - 3/8" - Black Zinc
12	1706188	Spring LH
13	1128256	Pivot Sleeve - Black
14	1128257	Pivot Weldment - Black
15	1706097	Fender Washer - 1/2"
16	1705914	Hex Cap Screw - 1/2" x 3-1/4" Black Zinc
17	1706189	Spring RH
18	1705919	Nylon Lock Nut - 5/16" - Black Zinc
19	1705911	Flat Washer - 1/2" - Black Zinc



MORE QUALITY PRODUCTS FROM DONOVAN®

CONSTRUCTION PRODUCTS

- Arm-Matic™
- Flash™
- Bullet™
- Hammer™ II
- DuraPull™
- 5000X
- UT Tarp System™
- 2000SR

WASTE PRODUCTS

- SWAT®
- Quick-Flip™ III
- Sidewinder™
- Sidewinder™ 350
- Hy-Tower™ SL
- Hy-Tower™ DL
- Double-Flip™
- Donovan® Belt & Ratchet (DBR)

TARP SYSTEMS, PARTS & TARPS

